

WAAS CH 53711 W26A	APP CRS 256°	Rwy Idg TDZE 24 Apt Elev 26	4997
--	------------------------	---	-------------

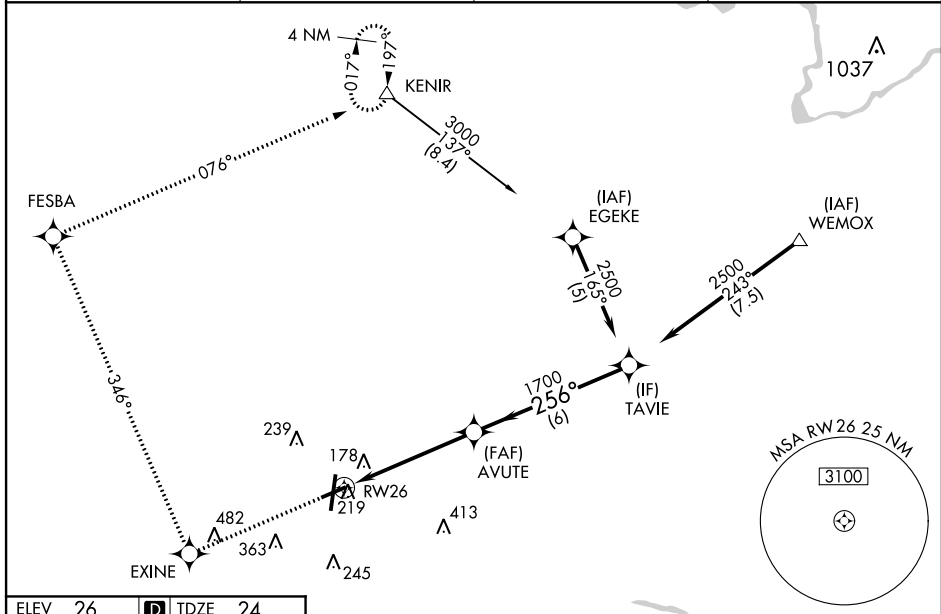
RNAV (GPS) RWY 26

PITT-GREENVILLE (PGV)

⚠ Baro-VNAV NA when using Washington altimeter setting. For uncompensated Baro-VNAV systems, LNAV/VNAV NA below -1.5°C (5°F) or above 48°C (118°F).
⚠ DME/DME RNP-0.3 NA. Visibility reduction by helicopters NA. When local altimeter setting not received use Washington altimeter setting and increase all DA 41 feet and all MDA 60 feet, increase LPV and LNAV/VNAV all Cats, LNAV Cat C and D, and Circling Cat C visibilities ¼ mile.

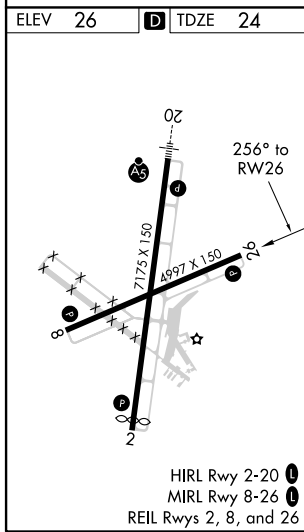
MISSED APPROACH: Climb to 3000 direct EXINE and via 346° track to FESBA and via 076° track to KENIR and hold.

AWOS-3 128.425	WASHINGTON CENTER 123.85 279.65	CLNC DEL 122.35	UNICOM 122.8 (CTAF) 0
--------------------------	---	---------------------------	---------------------------------



SE-2, 08 OCT 2020 to 05 NOV 2020

SE-2, 08 OCT 2020 to 05 NOV 2020



3000	EXINE	tr 346°	FESBA	tr 076°	KENIR	VGS1 and descent angles not coincident (VGS1 Angle 3.00/TCH 40).	TAVIE	Procedure Turn NA
2500	AVUTE						2500	GP 3.00° TCH 45
5.1 NM		6 NM						
CATEGORY	A		B		C		D	
LPV DA	335-1 311 (400-1)							
LNAV/VNAV DA	464-1½ 440 (500-1½)							
LNAV MDA	520-1 496 (500-1)		520-1¼ 496 (500-1¼)		520-1½ 496 (500-1½)		520-1½ 496 (500-1½)	
CIRCLING	620-1 594 (600-1)		620-1½ 594 (600-1½)		620-2 594 (600-2)		620-2 594 (600-2)	