

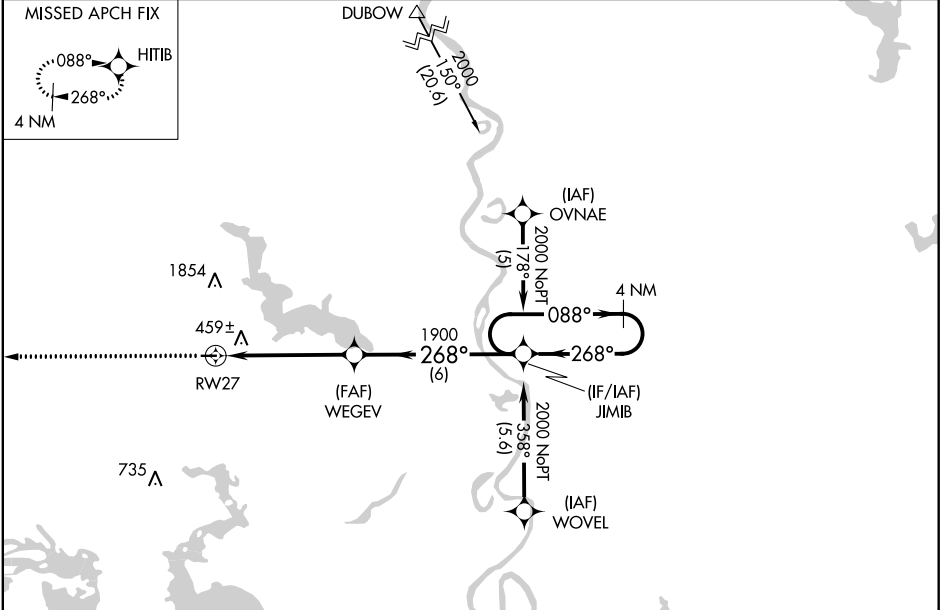
APP CRS	Rwy Idg	2998
268°	TDZE	260
	Apt Elev	260

RNAV (GPS) RWY 27

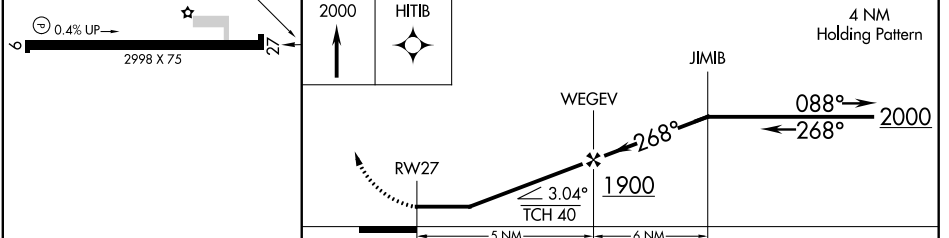
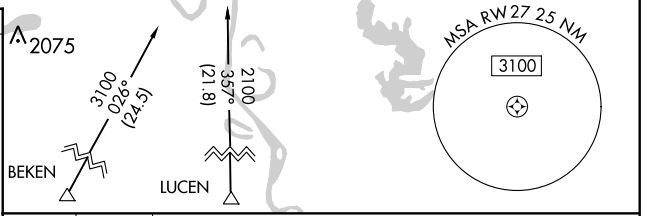
VIVIAN (3F4)

RNP APCH.	MISSED APPROACH: Climb to 2000 direct HITIB and hold.
<p>▼ Use Shreveport Rgnl altimeter setting; when not received, use Shreveport Downtown altimeter setting. Procedure NA at night. Rwy 27 helicopter visibility reduction below 1 SM NA.</p> <p>▲ NA</p>	

SHREVEPORT APP CON 119.9 335.55	GCO 135.075	UNICOM 122.8 (CTAF) 0
---	-----------------------	---------------------------------



ELEV 260	TDZE 260
<p>268° to RWY 27</p> <p>0.4% UP</p> <p>2998 X 75</p>	



CATEGORY	A	B	C	D
LNAV MDA	860-1	600 (600-1)	860-1¾ 600 (600-1¾)	NA

SC-4, 08 OCT 2020 to 05 NOV 2020

SC-4, 08 OCT 2020 to 05 NOV 2020