

ECHOO ONE DEPARTURE (RNAV)

AL-5715 (FAA)

CENTENNIAL (APA)
DENVER, COLORADO

SW-1, 08 OCT 2020 to 05 NOV 2020

TOP ALTITUDE:
FL230

NOTE: DME/DME/IRU or GPS required.

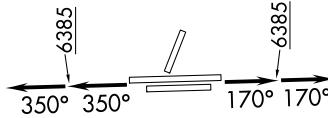
NOTE: RNAV 1.

NOTE: Turbojets only.

NOTE: RADAR required.

NOTE: Accelerate to 250K or greater upon reaching 10000.

If slower speed is required to meet crossing restrictions advise CLNC DEL prior to taxi.



TAKEOFF MINIMUMS

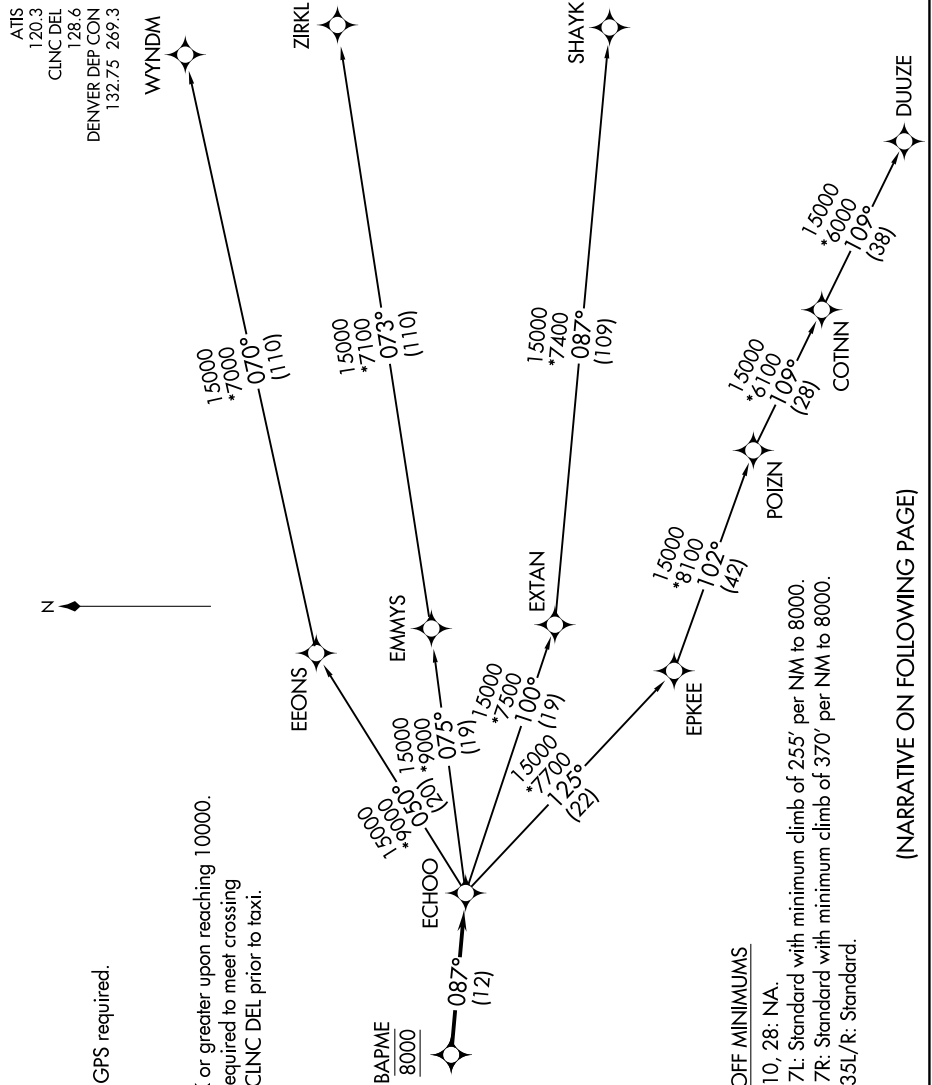
Rwys 10, 28: NA.

Rwy 17L: Standard with minimum climb of 255' per NM to 8000.

Rwy 17R: Standard with minimum climb of 370' per NM to 8000.

Rwys 35L/R: Standard.

NOTE: Chart not to scale.



(NARRATIVE ON FOLLOWING PAGE)

SW-1, 08 OCT 2020 to 05 NOV 2020

ECHOO ONE DEPARTURE (RNAV)