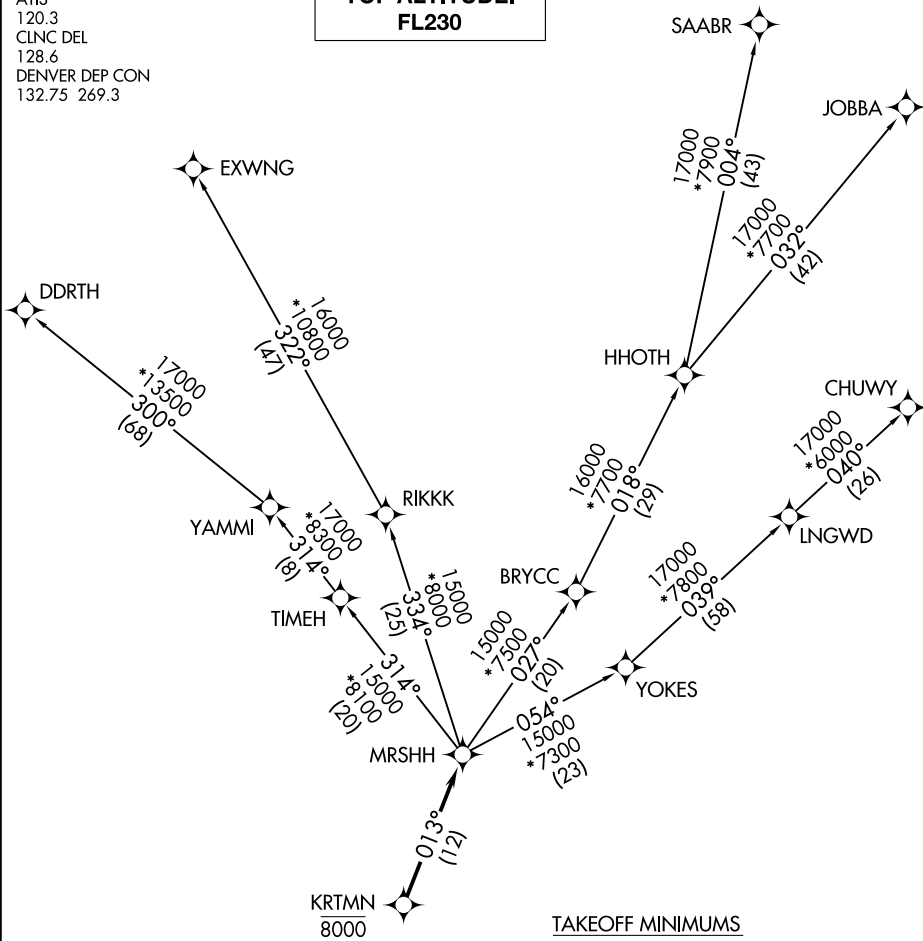


ATIS
120.3
CLINC DEL
128.6
DENVER DEP CON
132.75 269.3

**TOP ALTITUDE:
FL230**



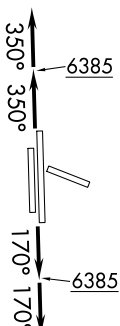
SW-1, 08 OCT 2020 to 05 NOV 2020

SW-1, 08 OCT 2020 to 05 NOV 2020

TAKEOFF MINIMUMS

Rwys 10, 28: NA.
 Rwy 17L: Standard with minimum climb of 255' per NM to 8000.
 Rwy 17R: Standard with minimum climb of 370' per NM to 8000.
 Rwys 35L/R: Standard.

NOTE: DME/DME/IRU or GPS required.
 NOTE: RNAV 1.
 NOTE: Turbojets only.
 NOTE: RADAR required.



(NARRATIVE ON FOLLOWING PAGE)