

WAAS CH <b>72732</b> <b>W22A</b>	APP CRS <b>217°</b>	Rwy Idg TDZE <b>869</b> Apt Elev <b>869</b>	<b>6497</b>
--	------------------------	---	-------------

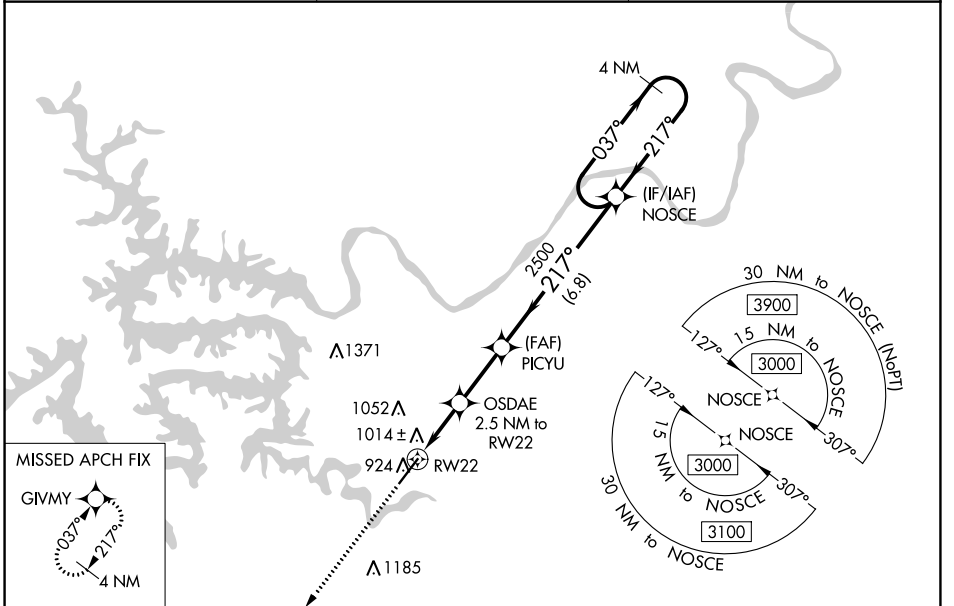
# RNAV (GPS) RWY 22

LEE C FINE MEMORIAL (AIZ)

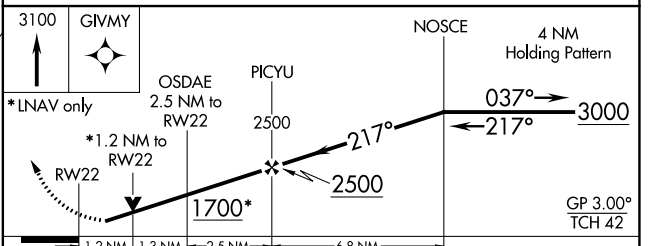
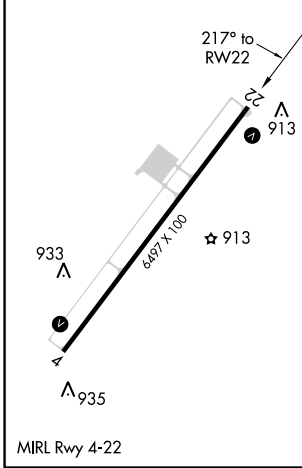
**▼** For uncompensated Baro-VNAV systems, LNAV/VNAV NA below -16°C (4°F) or above 54°C (130°F).  
**▲** DME/DME RNP-0.3 NA. Helicopter visibility reduction below 1 SM NA. When local altimeter setting not received, use Camdenton altimeter setting and increase all DA 50 feet, all MDA 60 feet, LNAV/VNAV all Cats visibility 1/8 mile and LNAV Cat C visibility 1/4 mile. Baro-VNAV and VDP NA with Camdenton altimeter setting.

MISSED APPROACH:  
Climb to 3100 direct GIVMY and hold.

AWOS-3PT <b>135.325</b>	MIZZU APP CON <b>124.1 353.7</b>	UNICOM <b>122.8 (CTAF)</b>
----------------------------	-------------------------------------	-------------------------------



ELEV <b>869</b>	TDZE <b>869</b>
-----------------	-----------------



CATEGORY	A	B	C	D
LPV DA		1119-1	250 (300-1)	NA
LNAV/VNAV DA		1164-1	295 (300-1)	NA
LNAV MDA	1280-1	411 (500-1)	1280-1 1/8 411 (500-1 1/8)	NA
CIRCLING	1320-1	451 (500-1)	1380-1 1/2 511 (600-1 1/2)	NA

NC-3, 08 OCT 2020 to 05 NOV 2020

NC-3, 08 OCT 2020 to 05 NOV 2020