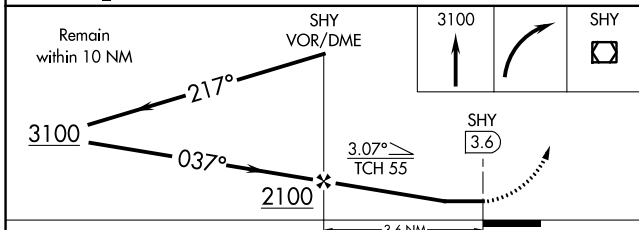
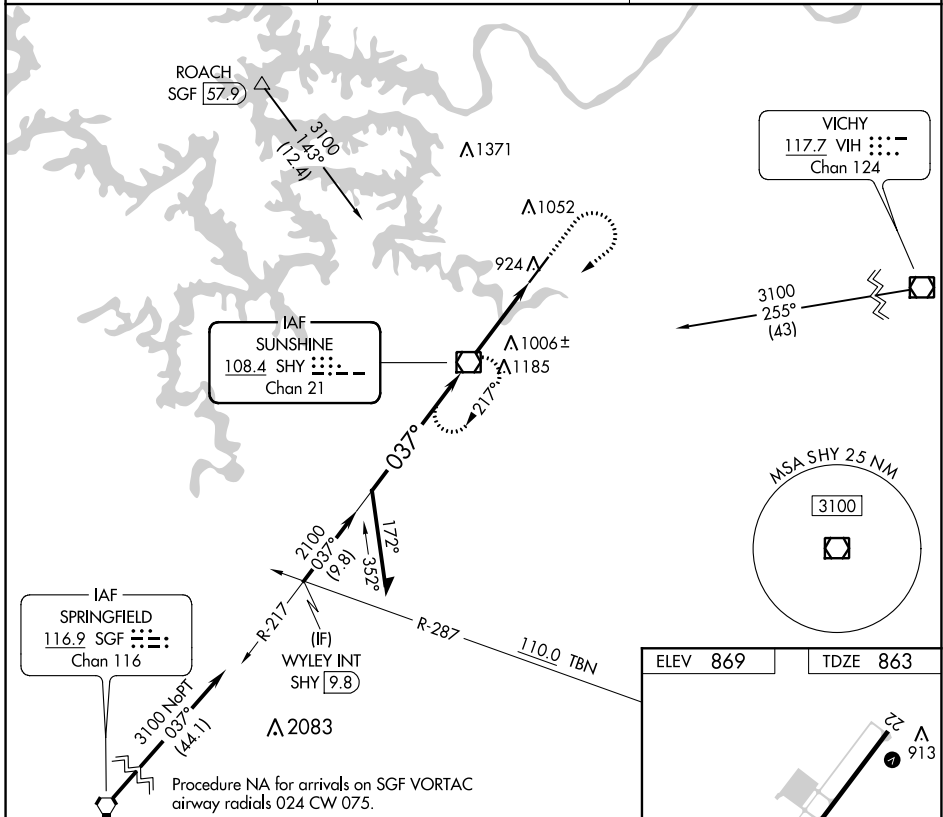


VOR/DME SHY <b>108.4</b> Chan 21	APP CRS <b>037°</b>	Rwy Idg <b>6497</b> TDZE <b>863</b> Apt Elev <b>869</b>
--	------------------------	---

# VOR RWY 4

LEE C FINE MEMORIAL (AIZ)

<p><b>▼</b> Straight-in minimums NA at night. Helicopter visibility reduction below 1 SM NA.  <b>▲</b> When local altimeter setting not received, use Camdenton altimeter setting and increase all MDA 60 feet and S-4 Cat C visibility 1/4 mile.</p>	<p>MISSED APPROACH: Climb to 3100 then right turn direct SHY VOR/DME and hold.</p>	
<p>AWOS-3PT <b>135.325</b></p>	<p>MIZZU APP CON <b>124.1 353.7</b></p>	<p>UNICOM <b>122.8 (CTAF) 0</b></p>



ELEV 869	TDZE 863
FAF to MAP 3.6 NM	
Knots	60 90 120 150 180
Min:Sec	3:36 2:24 1:48 1:26 1:12

CATEGORY	A	B	C	D
S-4	1260-1	397 (400-1)	1260-1 1/8 397 (400-1 1/8)	NA
CIRCLING	1320-1	451 (500-1)	1380-1 1/2 511 (600-1 1/2)	NA

NC-3, 08 OCT 2020 to 05 NOV 2020

NC-3, 08 OCT 2020 to 05 NOV 2020