

NDB OOC <b>407</b>	APP CRS <b>343°</b>	Rwy Idg <b>5003</b>
		TDZE <b>121</b>
		Apt Elev <b>121</b>

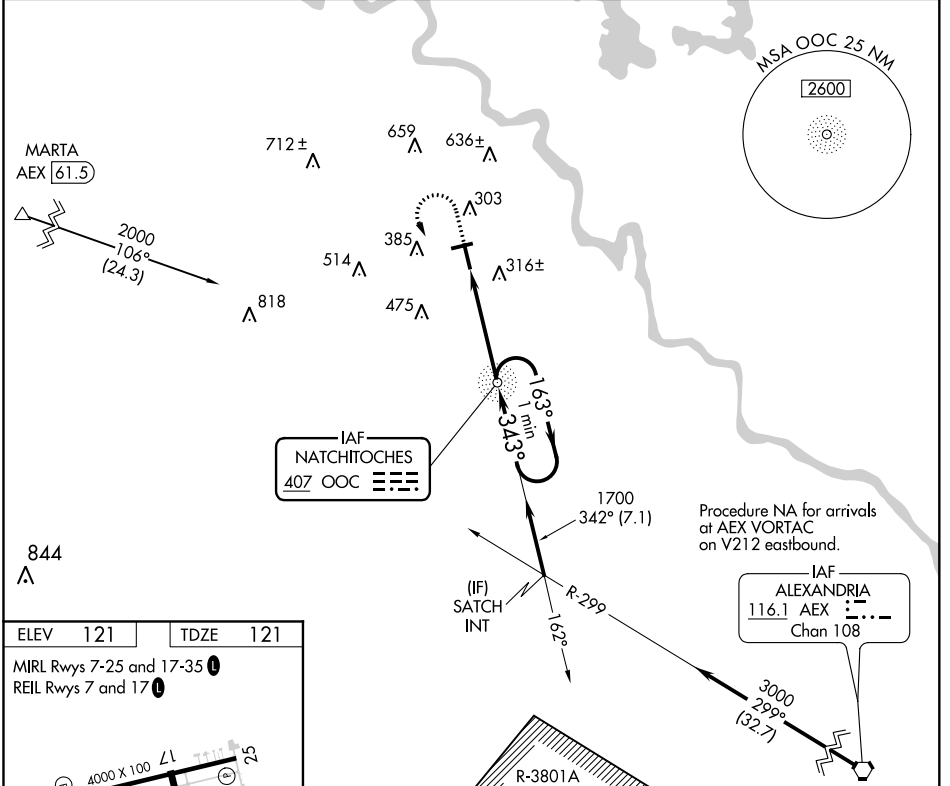
# NDB RWY 35

NATCHITOCHE RGNL (IER)

**NA** Helicopter visibility reduction below 3/4 SM NA. When local altimeter setting not received, use Alexandria Intl altimeter setting and increase all MDA 100 feet and S-35 Cat C visibility 1/8 mile, Circling Cat C visibility 1/4 mile. For inoperative ODALS increase S-35 Cat C visibility 1/8 mile. Inoperative table does not apply to S-35 Cat A/B.

**ODALS** MISSED APPROACH: Climb to 1000 then climbing left turn to 2000 direct OOC NDB and hold.

AWOS-3 <b>119.025</b>	POLK APP CON <b>125.4 302.2</b>	GCO <b>135.075</b>	UNICOM <b>122.8(CTAF)</b>
--------------------------	------------------------------------	-----------------------	------------------------------



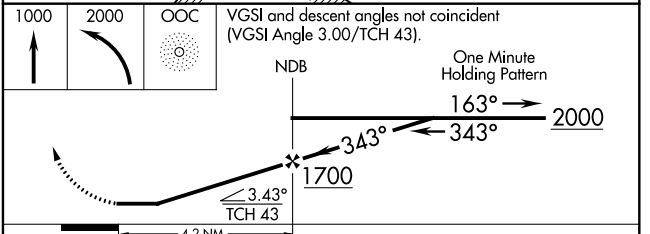
ELEV 121 TDZE 121

MIRL Rwy 7-25 and 17-35  
REIL Rwy 7 and 17

4000 X 100  
5003 X 150  
343° 4.2 NM from FAF

FAF to MAP 4.2 NM

Knots	60	90	120	150	180
Min:Sec	4:12	2:48	2:06	1:41	1:24



CATEGORY	A	B	C	D
S-35	720-1	599 (600-1)	720-1 1/2 599 (600-1 1/2)	NA
CIRCLING	720-1 599 (600-1)	740-1 619 (700-1)	740-1 3/4 619 (700-1 3/4)	NA

SC-4, 08 OCT 2020 to 05 NOV 2020

SC-4, 08 OCT 2020 to 05 NOV 2020