

WAAS CH 77810 W17A	APP CRS 162°	Rwy ldg 5003 TDZE 117 Apt Elev 121
--	------------------------	---

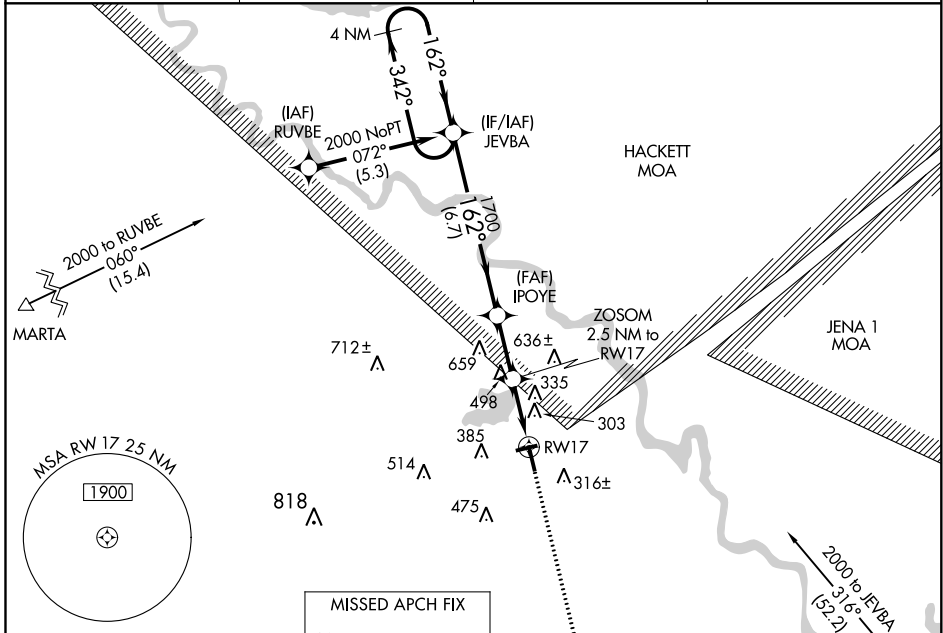
RNAV (GPS) RWY 17

NATCHITOCHES RGNL (IER)

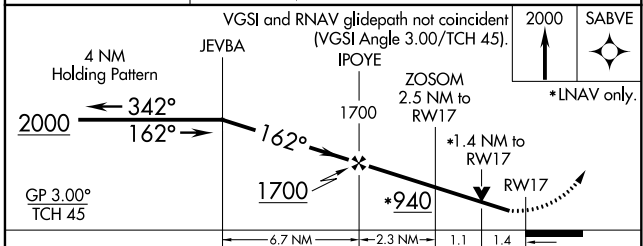
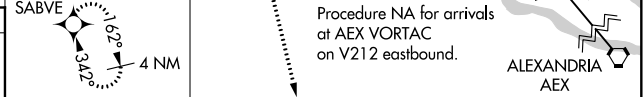
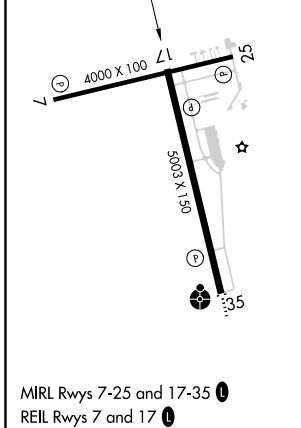
▼
▲ For uncompensated Baro-VNAV systems, LNAV/VNAV NA below -15°C (5°F) or above 54°C (130°F). DME/DME RNP-0.3 NA. Visibility reduction by helicopters NA. When local altimeter setting not received, use Alexandria Intl altimeter setting and increase all DA 91 feet and all MDA 100 feet. Increase LPV and LNAV/VNAV visibility 3/8 mile all Cats, LNAV Cat C 3/8 mile and Circling Cat C 1/4 mile. Baro-VNAV and VDP NA when using Alexandria Intl altimeter setting.

MISSED APPROACH:
Climb to 2000 direct SABVE and hold.

AWOS-3 119.025	POLK APP CON 125.4 302.2	GCO 135.075	UNICOM 122.8 (CTAF) 0
--------------------------	------------------------------------	-----------------------	---------------------------------



ELEV 121	TDZE 117
-----------------	-----------------



CATEGORY	A	B	C	D
LPV DA	367-3/4	250 (300-3/4)		NA
LNAV/VNAV DA	658-1 7/8	541 (600-1 7/8)		NA
LNAV MDA	620-1	503 (500-1)	620-1 3/8 503 (500-1 3/8)	NA
CIRCLING	680-1 559 (600-1)	740-1 619 (700-1)	740-1 3/4 619 (700-1 3/4)	NA

SC-4, 08 OCT 2020 to 05 NOV 2020

SC-4, 08 OCT 2020 to 05 NOV 2020