


WAAS CH <b>86510</b> <b>W35A</b>	APP CRS <b>342°</b>	Rwy ldg <b>5003</b> TDZE <b>121</b> Apt Elev <b>121</b>
--	------------------------	---

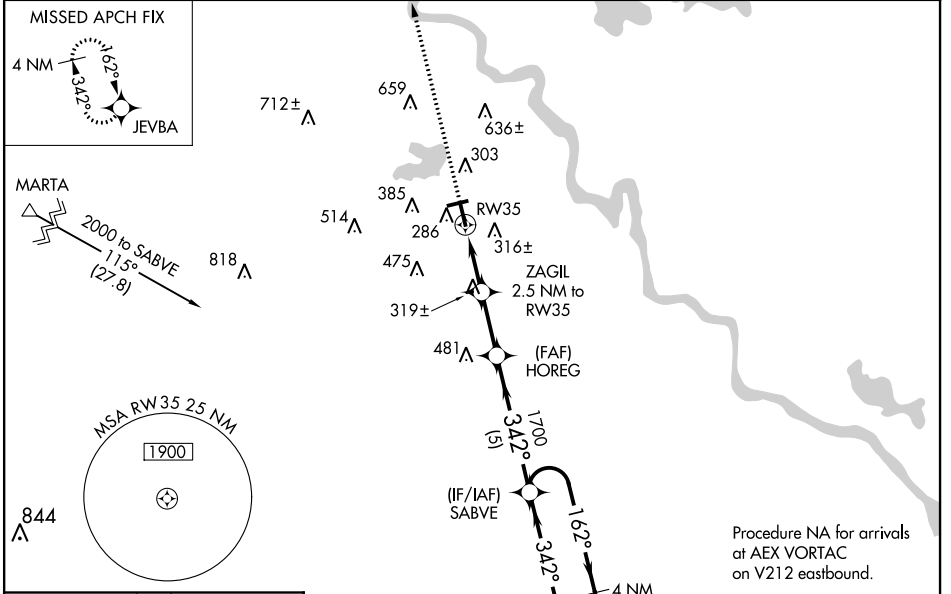
# RNAV (GPS) RWY 35

NATCHITOCHES RGNL (I.E.R.)


**⚠** Inoperative table does not apply to LPV all Cats, and LNAV Cats A and B. Baro-VNAV NA when using Alexandria Intl altimeter setting. For uncompensated Baro-VNAV systems, LNAV/VNAV NA below -1.5°C (5°F) or above 54°C (130°F). DME/DME RNP-0.3 NA. Helicopter visibility reduction below 3/4 SM NA. When local altimeter setting not received, use Alexandria Intl altimeter setting and increase all DA 91 feet and all MDA 100 feet. Increase LNAV/VNAV all Cats, LNAV Cat C and Circling Cat C visibility 1/4 mile. For inoperative ODALS, increase LNAV/VNAV all Cats visibility 1/2 mile.


**ODALS**  MISSED APPROACH: Climb to 2000 direct JEVBA and hold.

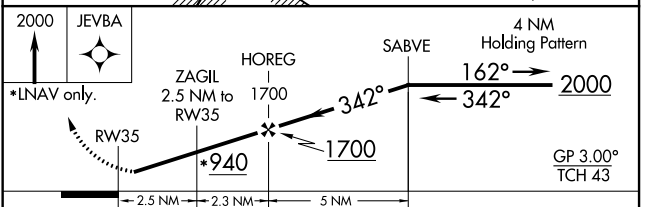
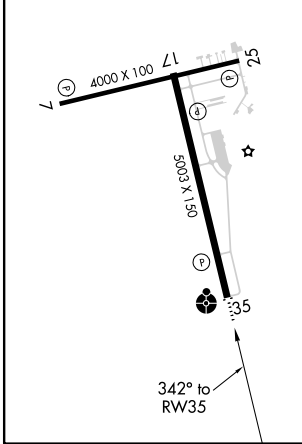
AWOS-3 <b>119.025</b>	POLK APP CON <b>125.4 302.2</b>	GCO <b>135.075</b>	UNICOM <b>122.8</b> (CTAF) 
--------------------------	------------------------------------	-----------------------	---



ELEV <b>121</b>	TDZE <b>121</b>
-----------------	-----------------

MIRL Rwy 7-25 and 17-35 

REIL Rwy 7 and 17 



CATEGORY	A	B	C	D
LPV DA		371-1	250 (300-1)	NA
LNAV/VNAV DA		486-1 1/2	365 (400-1 1/2)	NA
LNAV MDA	580-1	459 (500-1)	580-1 1/2 459 (500-1 1/2)	NA
CIRCLING	680-1 559 (600-1)	740-1 619 (700-1)	740-1 3/4 619 (700-1 3/4)	NA

SC-4, 08 OCT 2020 to 05 NOV 2020

SC-4, 08 OCT 2020 to 05 NOV 2020