

(BLECO8.BLECO) 18088

AL-6039 (FAA)

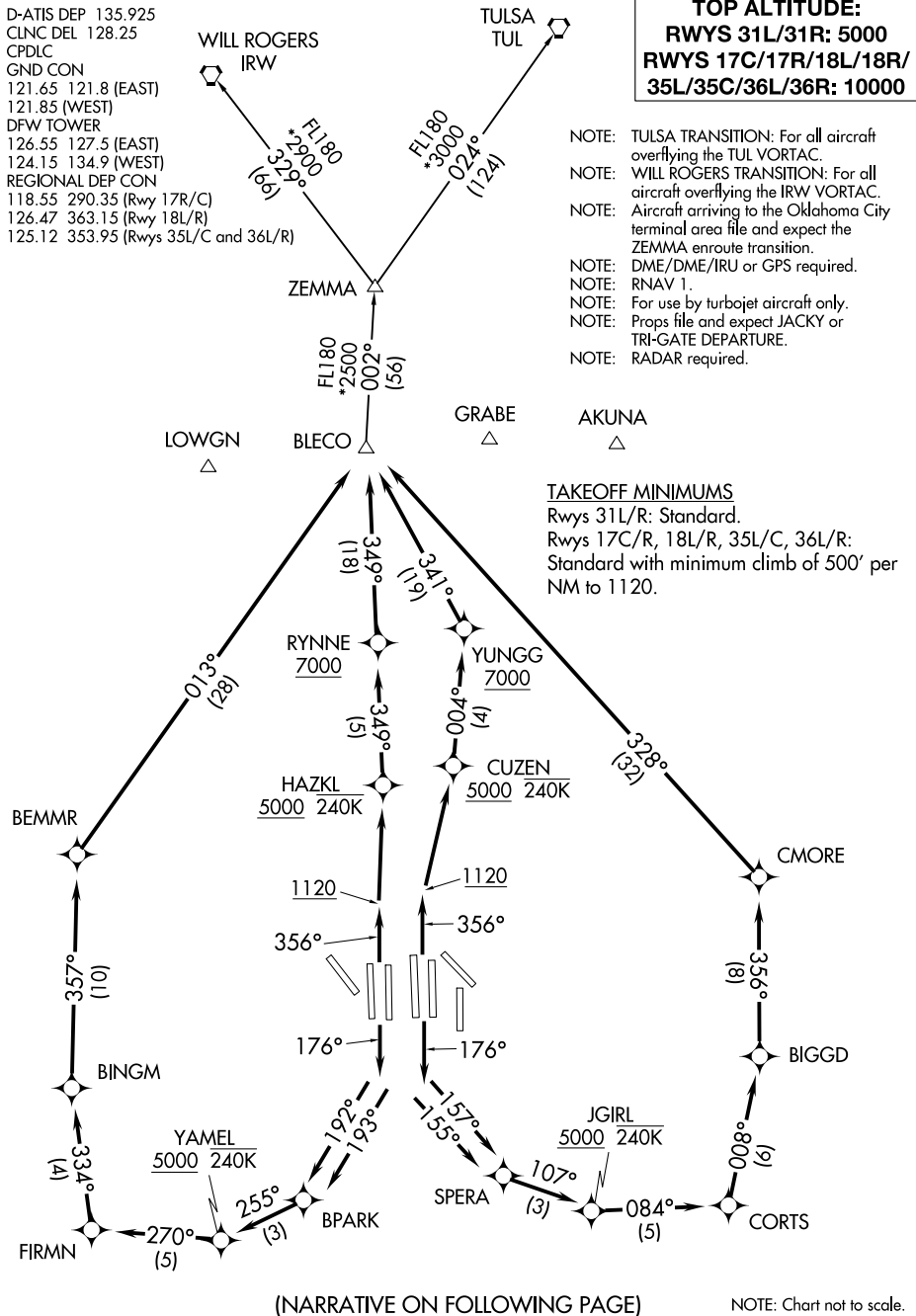
DALLAS-FORT WORTH INTL (DFW)
DALLAS-FORT WORTH, TEXAS

BLECO EIGHT DEPARTURE (RNAV)

D-ATIS DEP 135.925
 CLNC DEL 128.25
 CPDLC
 GND CON
 121.65 121.8 (EAST)
 121.85 (WEST)
 DFW TOWER
 126.55 127.5 (EAST)
 124.15 134.9 (WEST)
 REGIONAL DEP CON
 118.55 290.35 (Rwy 17R/C)
 126.47 363.15 (Rwy 18L/R)
 125.12 353.95 (Rwys 35L/C and 36L/R)

TOP ALTITUDE:
RWYS 31L/31R: 5000
**RWYS 17C/17R/18L/18R/
 35L/35C/36L/36R: 10000**

- NOTE: TULSA TRANSITION: For all aircraft overflying the TUL VORTAC.
- NOTE: WILL ROGERS TRANSITION: For all aircraft overflying the IRW VORTAC.
- NOTE: Aircraft arriving to the Oklahoma City terminal area file and expect the ZEMMA enroute transition.
- NOTE: DME/DME/IRU or GPS required.
- NOTE: RNAV 1.
- NOTE: For use by turbojet aircraft only.
- NOTE: Props file and expect JACKY or TRI-GATE DEPARTURE.
- NOTE: RADAR required.



(NARRATIVE ON FOLLOWING PAGE)

NOTE: Chart not to scale.

BLECO EIGHT DEPARTURE (RNAV)

(BLECO8.BLECO) 29MAR18

DALLAS-FORT WORTH, TEXAS
DALLAS-FORT WORTH INTL (DFW)

SC-2, 08 OCT 2020 to 05 NOV 2020

SC-2, 08 OCT 2020 to 05 NOV 2020