

(BOOVE.BOOVE4) 17117

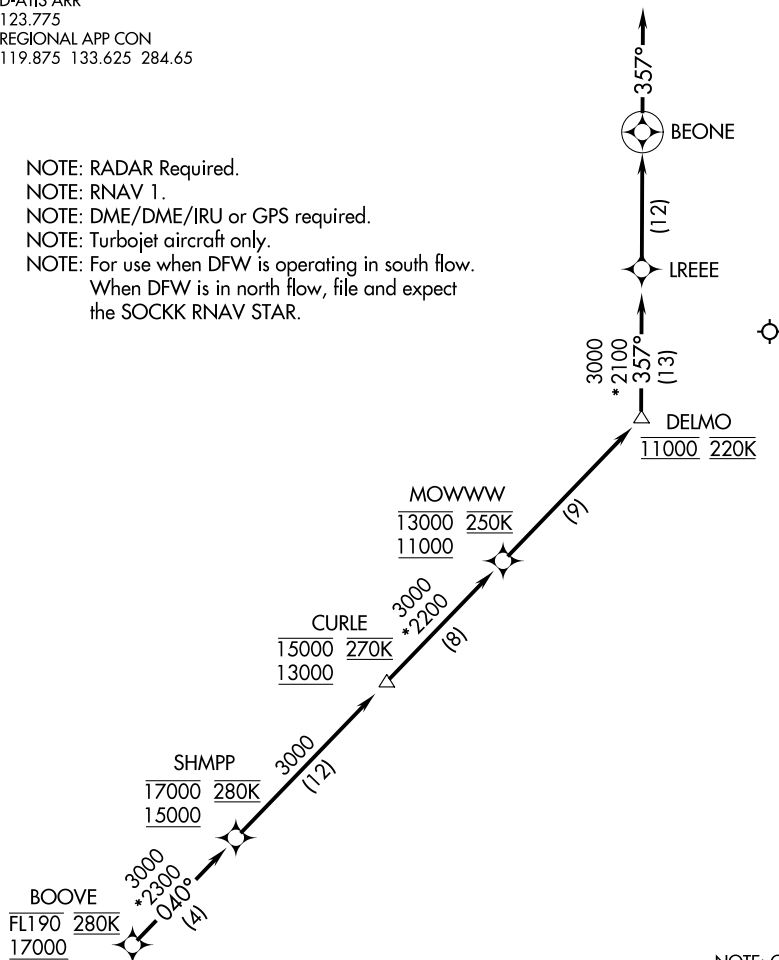
AL-6039 (FAA)

DALLAS-FORT WORTH INTL (DFW)
DALLAS-FORT WORTH, TEXAS

BOOVE FOUR ARRIVAL (RNAV) Arrival Route

D-ATIS ARR
123.775
REGIONAL APP CON
119.875 133.625 284.65

- NOTE: RADAR Required.
- NOTE: RNAV 1.
- NOTE: DME/DME/IRU or GPS required.
- NOTE: Turbojet aircraft only.
- NOTE: For use when DFW is operating in south flow.
When DFW is in north flow, file and expect the SOCKK RNAV STAR.



NOTE: Chart not to scale.

ARRIVAL ROUTE DESCRIPTION

From BOOVE on track 040° to cross SHMPP between 15000 and 17000 and at 280K, then on track 040° to cross CURLE between 13000 and 15000 and at 270K, then on track 040° to cross MOWWW between 11000 and 13000 and at 250K, then on track 040° to cross DELMO at 11000 and at 220K, then on track 357° to LREEE, then on track 357° to BEONE, then on track 357°. Expect RADAR vectors to final approach course.

SC-2, 08 OCT 2020 to 05 NOV 2020

SC-2, 08 OCT 2020 to 05 NOV 2020

BOOVE FOUR ARRIVAL (RNAV) Arrival Route

(BOOVE.BOOVE4) 26MAY16

DALLAS-FORT WORTH, TEXAS
DALLAS-FORT WORTH INTL (DFW)