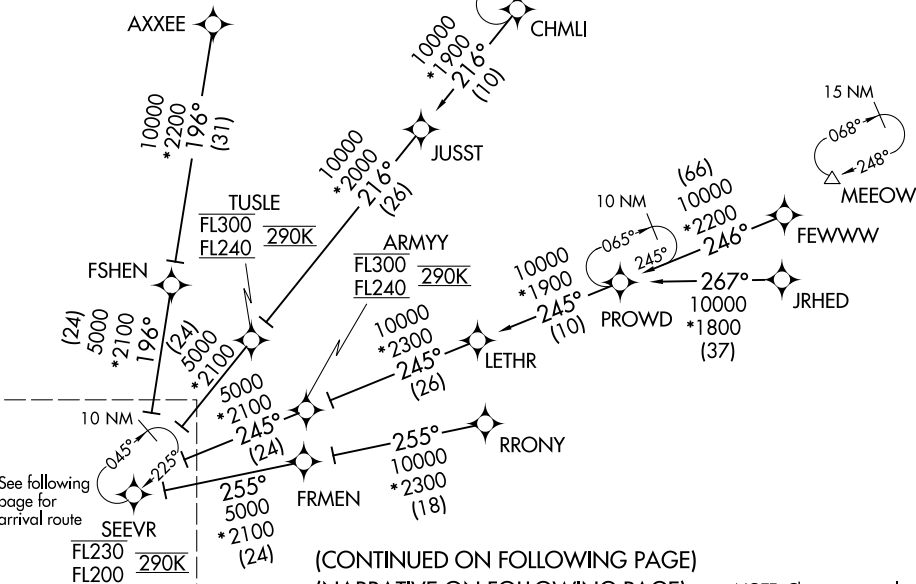


BRDJE THREE ARRIVAL (RNAV) Transition Routes

D-ATIS ARR
123.775
REGIONAL APP CON
125.025 263.025

- NOTE: RADAR required.
- NOTE: RNAV 1.
- NOTE: DME/DME/IRU or GPS required.
- NOTE: Turbojet aircraft only.
- NOTE: For use when DFW is operating in a north flow.
- NOTE: When DFW is in south flow, expect and file the SEEV RNAV STAR.

- AXXE TRANSITION (AXXE.BRDJE3):
(for aircraft filing FL230 and below)
- CHMLI TRANSITION (CHMLI.BRDJE3):
(ATC assigned only)
- FEWWWW TRANSITION (FEWWWW.BRDJE3)
- HITUG TRANSITION (HITUG.BRDJE3)
- JRHED TRANSITION (JRHED.BRDJE3):
(ATC assigned only)
- PROWD TRANSITION (PROWD.BRDJE3):
(ATC assigned only)
- RRNET TRANSITION (RRNET.BRDJE3)
- RRONY TRANSITION (RRONY.BRDJE3):
(for aircraft filing FL230 and below)



(CONTINUED ON FOLLOWING PAGE)
(NARRATIVE ON FOLLOWING PAGE)

NOTE: Chart not to scale.

SC-2, 08 OCT 2020 to 05 NOV 2020

SC-2, 08 OCT 2020 to 05 NOV 2020

BRDJE THREE ARRIVAL (RNAV) Transition Routes