

# CEDAR CREEK ONE ARRIVAL

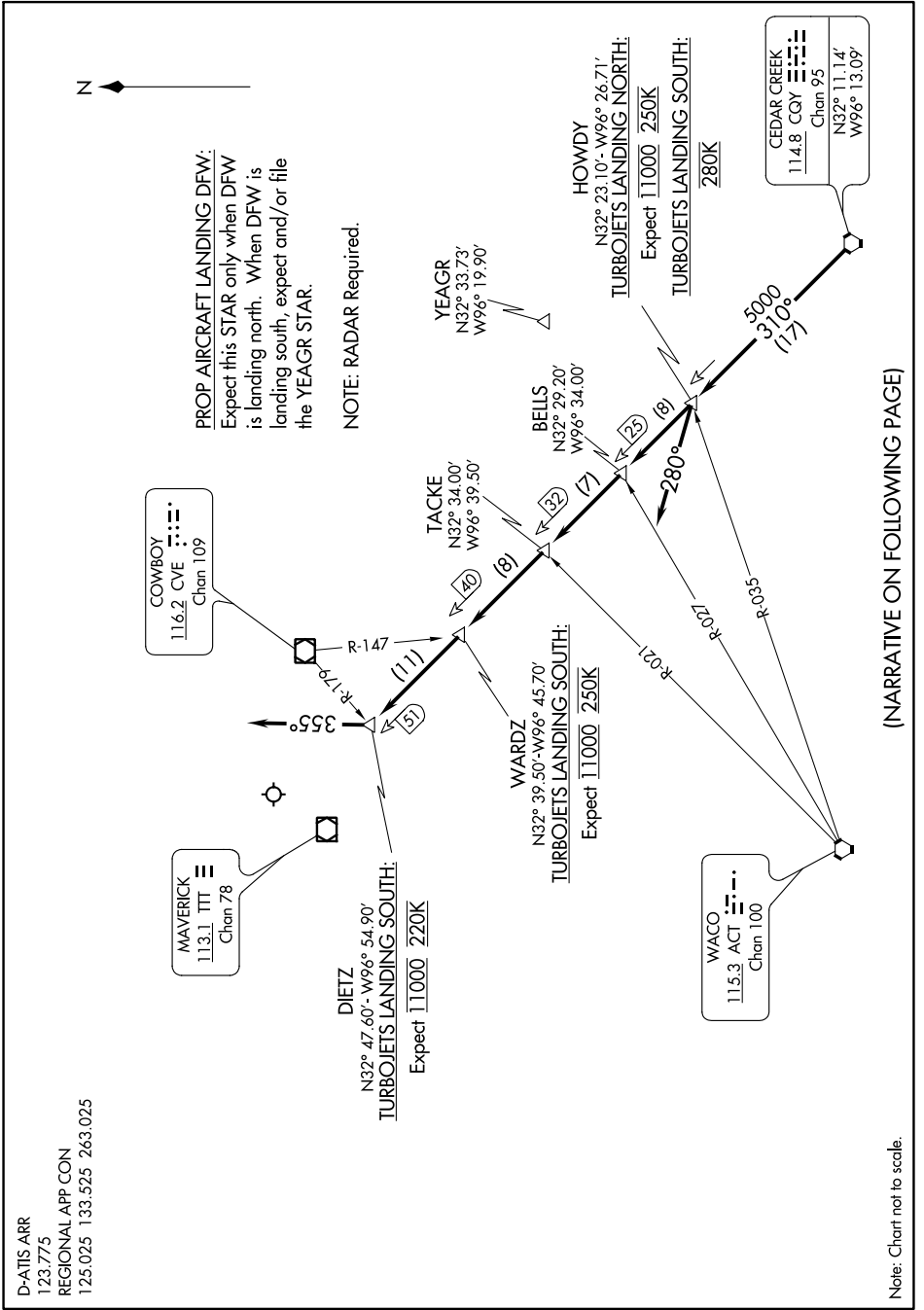
## Arrival Routes

SC-2, 08 OCT 2020 to 05 NOV 2020

D-ATIS ARR  
123.775  
REGIONAL APP CON  
125.025 133.525 263.025

# CEDAR CREEK ONE ARRIVAL

## Arrival Routes



(NARRATIVE ON FOLLOWING PAGE)

SC-2, 08 OCT 2020 to 05 NOV 2020

Note: Chart not to scale.