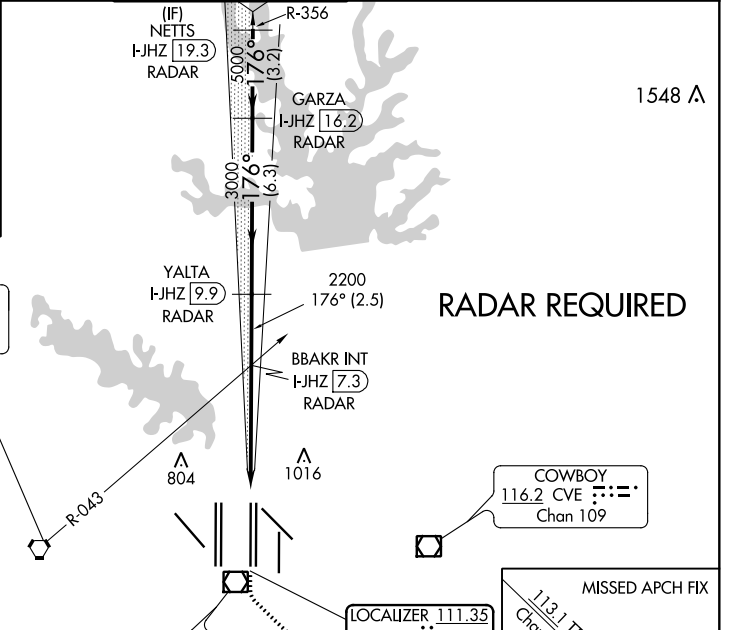
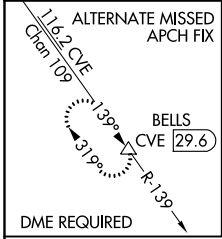


LOC/DME I-JHZ 111.35 Chan 50 (Y)	APP CRS 176°	Rwy ldg 13400 TDZE 567 Apt Elev 607
---	------------------------	--

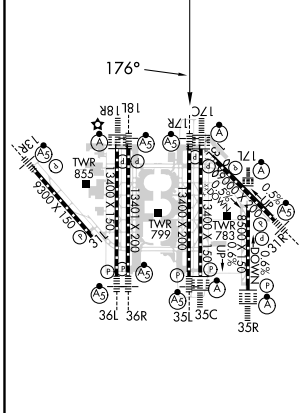
CONVERGING ILS RWY 17R

DALLAS-FORT WORTH INTL (DFW)

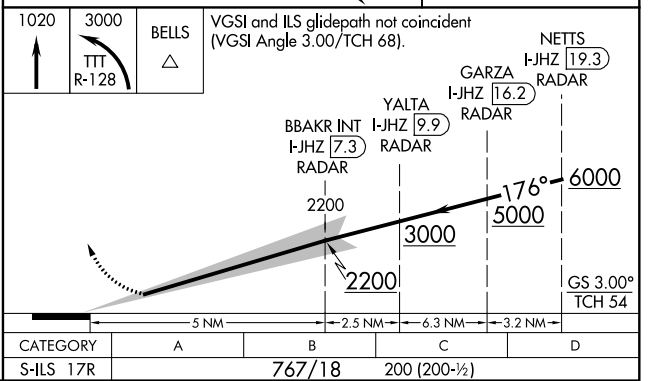
D-ATIS ARR 123.775 DEP 135.925	REGIONAL APP CON 127.075	DFW TOWER		GND CON		CLNC DEL 128.25	CPDLC
		126.55	127.5 EAST	121.65	121.8 EAST		
		124.15	134.9 WEST	121.85 WEST			



ELEV 607	D	TDZE 567
----------	----------	----------



HIRL all Rwy's
REIL Rwy's 13L and 31L
TDZ/CL all Rwy's except 13L and 31L



CATEGORY	A	B	C	D
S-ILS 17R	767/18		200 (200-1/2)	

CONVERGING ILS RWY 17R

SC-2, 08 OCT 2020 to 05 NOV 2020

SC-2, 08 OCT 2020 to 05 NOV 2020