

LOC/DME I-CIX <b>110.55</b> Chan <b>42 (Y)</b>	APP CRS <b>176°</b>	Rwy Idg <b>13401</b> TDZE <b>602</b> Apt Elev <b>607</b>
--	------------------------	--

# CONVERGING ILS RWY 18L

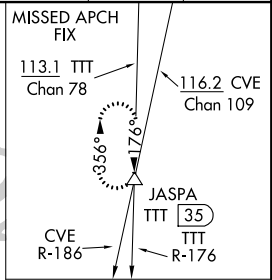
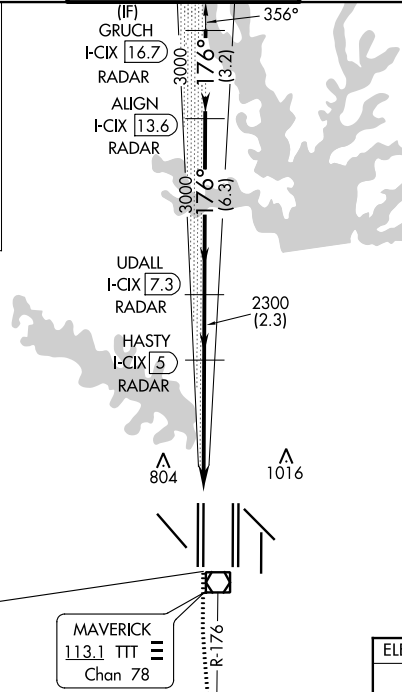
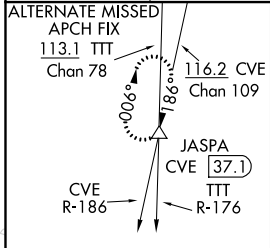
DALLAS-FORT WORTH INTL (DFW)

DME and RADAR required.

Simultaneous approach authorized with CONVERGING ILS RWY 13R.

MALSR MISSED APPROACH: Climb to 3000, then climb to 4000 on heading 170° and TTT VOR/DME R-176 to JASPA/TTT 35 DME and hold.

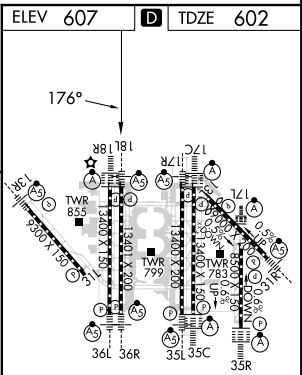
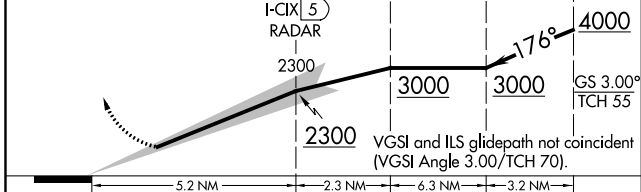
D-ATIS ARR <b>123.775</b> DEP <b>135.925</b>	REGIONAL APP CON <b>118.425</b>	DFW TOWER <b>126.55 127.5 EAST</b> <b>124.15 134.9 WEST</b>	GND CON <b>121.65 121.8 EAST</b> <b>121.85 WEST</b>	CLNC DEL <b>128.25</b>	CPDLC
--	------------------------------------	---	---	---------------------------	-------



LOCALIZER **110.55**  
I-CIX  
Chan **42 (Y)**

MAVERICK  
113.1 TTT  
Chan **78**

3000	4000	TTT R-176	JASPA
↑	↑	hdg 170°	△



CATEGORY	A	B	C	D
S-ILS 18L		802/18	200 (200-1/2)	

HIRL all Rwys  
REIL Rws 13L and 31L  
TDZ/CL all Rws except 13L and 31L

SC-2, 08 OCT 2020 to 05 NOV 2020

SC-2, 08 OCT 2020 to 05 NOV 2020