

LOC/DME I-BXN <b>111.9</b> Chan <b>56</b>	APP CRS <b>356°</b>	Rwy Idg TDZE Apt Elev <b>13400</b> <b>588</b> <b>607</b>
---	------------------------	---

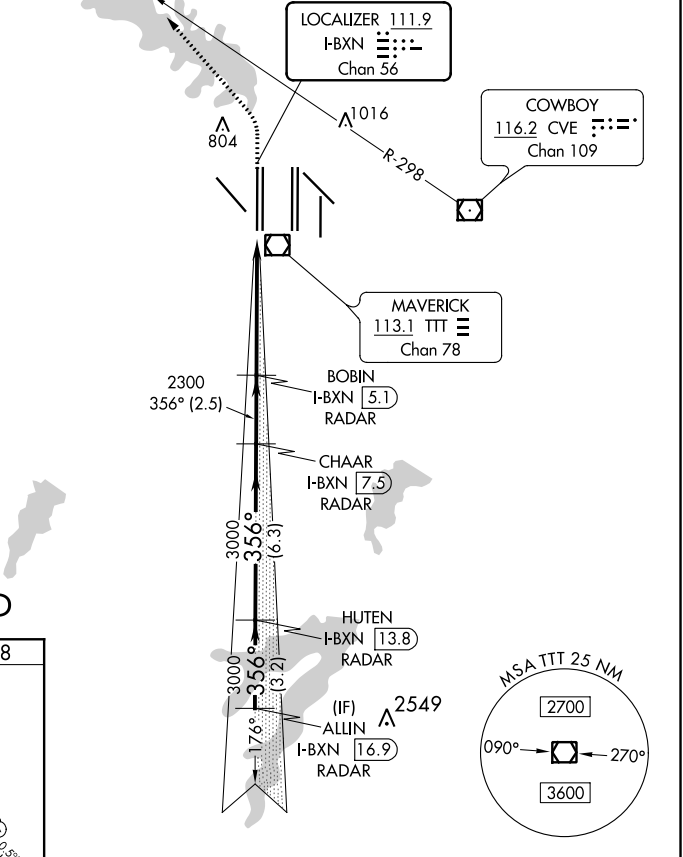
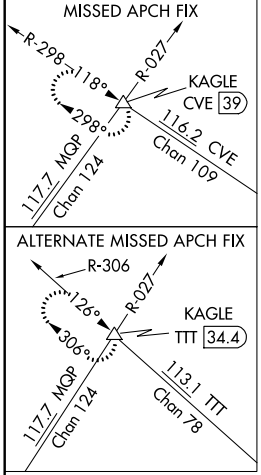
# CONVERGING ILS RWY 36L

DALLAS-FORT WORTH INTL (DFW)

**▼** DME or RADAR required. Simultaneous approach authorized with CONVERGING ILS RWY 31R.

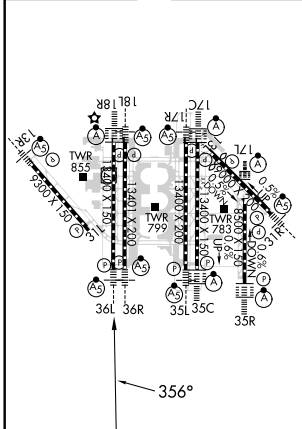
MALSR MISSED APPROACH: Climb to 1100 then climbing left turn to 3000 on heading 315° and CVE VOR/DME R-298 to KAGLE INT/CVE VOR/DME 39 DME and hold.

D-ATIS ARR <b>123.775</b> DEP <b>135.925</b>	REGIONAL APP CON <b>118.425</b>	DFW TOWER <b>126.55 127.5</b> EAST <b>124.15 134.9</b> WEST	GND CON <b>121.65 121.8</b> EAST <b>121.85</b> WEST	CLNC DEL <b>128.25</b>	CPDLC
--	------------------------------------	---	---	---------------------------	-------

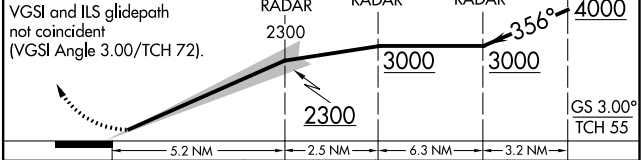


## RADAR REQUIRED

ELEV 607	<b>D</b>	TDZE 588
----------	----------	----------



1100	3000	KAGLE	ALLIN
↑	hdg 315°	CVE R-298	I-BXN 16.9 RADAR
		△	HUTEN I-BXN 13.8 RADAR
			CHAAR I-BXN 7.5 RADAR
			BOBIN I-BXN 5.1 RADAR



CATEGORY	A	B	C	D
S-ILS 36L	788/18 200 (200-1/2)			

# CONVERGING ILS RWY 36L

SC-2, 08 OCT 2020 to 05 NOV 2020

SC-2, 08 OCT 2020 to 05 NOV 2020