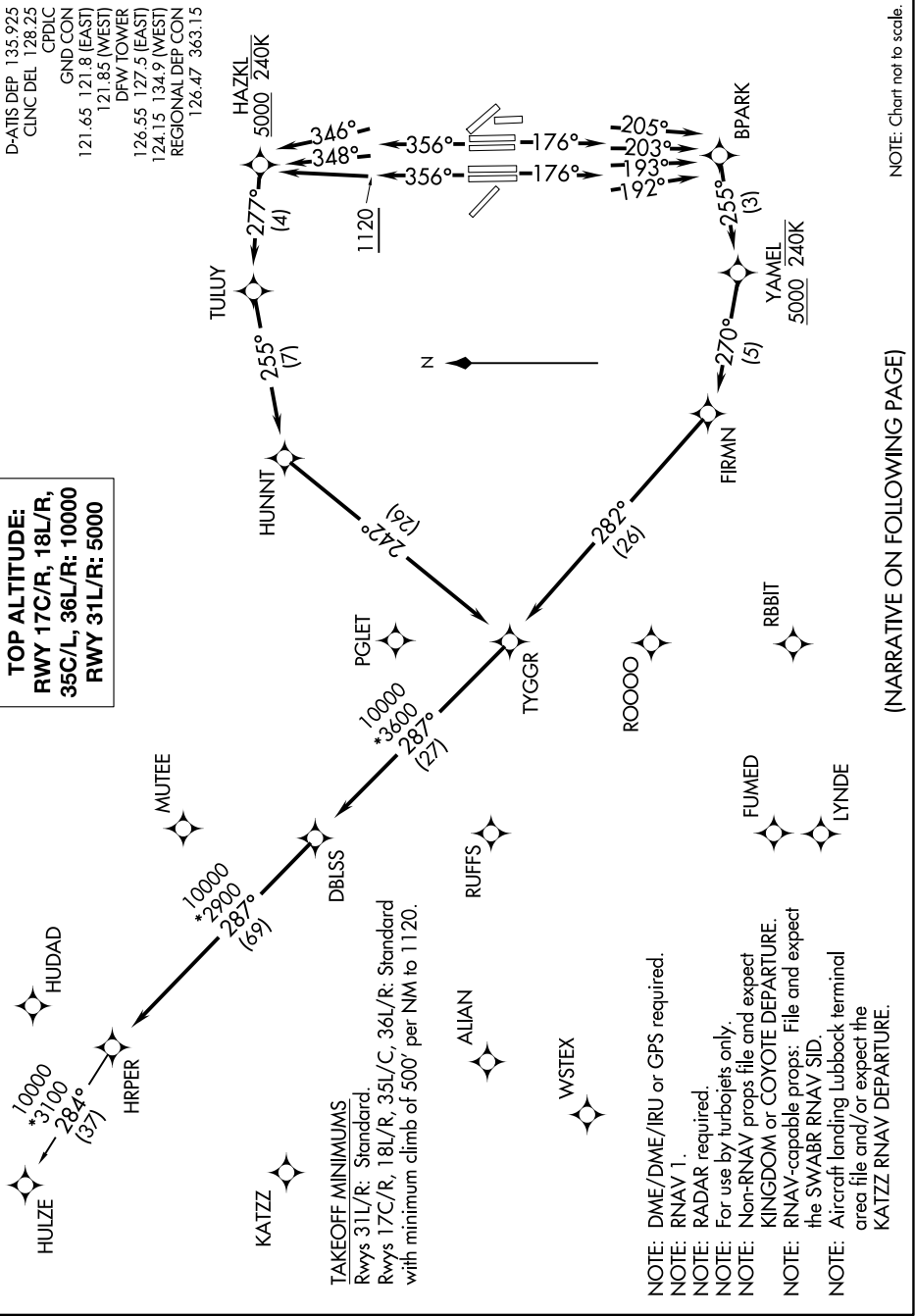


HRPER THREE DEPARTURE (RNAV)

SC-2, 08 OCT 2020 to 05 NOV 2020

TOP ALTITUDE:
RWY 17C/R, 18L/R,
35C/L, 36L/R: 10000
RWY 31L/R: 5000

D-ATIS DEP 135.925
 CLNC DEL 128.25
 CPDIC
 GND CON
 121.65 121.8 (EAST)
 121.85 (WEST)
 DFV TOWER
 126.55 127.5 (EAST)
 124.15 134.9 (WEST)
 REGIONAL DEP CON
 126.47 363.15



NOTE: Chart not to scale.

(NARRATIVE ON FOLLOWING PAGE)

SC-2, 08 OCT 2020 to 05 NOV 2020

HRPER THREE DEPARTURE (RNAV)