

# HUDAD TWO DEPARTURE (RNAV)

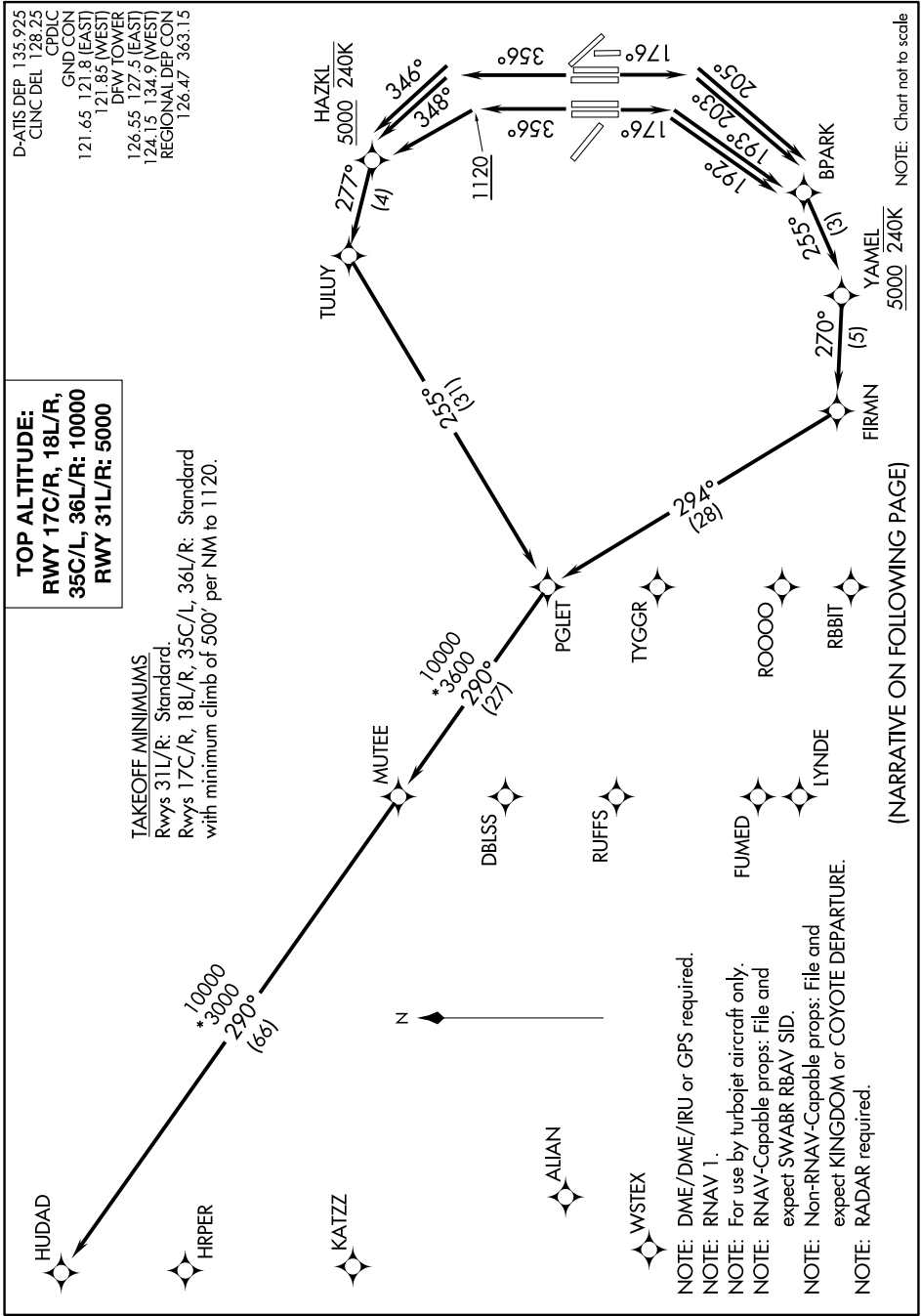
SC-2, 08 OCT 2020 to 05 NOV 2020

**TOP ALTITUDE:**  
 RWY 17C/R, 18L/R,  
 35C/L, 36L/R: 10000  
 RWY 31L/R: 5000

### TAKEOFF MINIMUMS

Rwys 31L/R: Standard.  
 Rwys 17C/R, 18L/R, 35C/L, 36L/R: Standard  
 with minimum climb of 500' per NM to 1120.

DATIS DEP 135.925  
 CLNC DEL 128.25  
 CPDLC  
 GND CON  
 121.65 121.8 (EAST)  
 121.85 (WEST)  
 DRW TOWER  
 126.55 127.5 (EAST)  
 124.15 134.9 (WEST)  
 REGIONAL DEP CON  
 126.47 363.15



- NOTE: DME/DME/IRU or GPS required.
- NOTE: RNAV 1.
- NOTE: For use by turbojet aircraft only.
- NOTE: RNAV-Capable props: File and expect SWABR RBAV SID.
- NOTE: Non-RNAV-Capable props: File and expect KINGDOM or COYOTE DEPARTURE.
- NOTE: RADAR required.

(NARRATIVE ON FOLLOWING PAGE)

NOTE: Chart not to scale

SC-2, 08 OCT 2020 to 05 NOV 2020

# HUDAD TWO DEPARTURE (RNAV)