

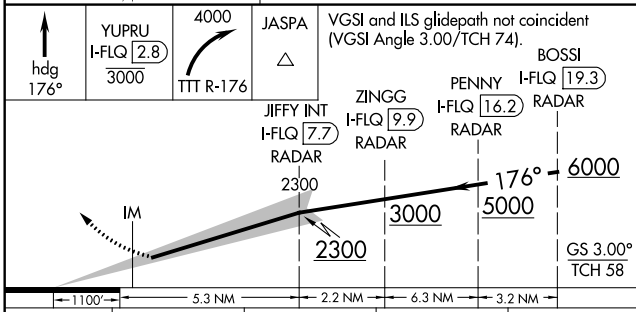
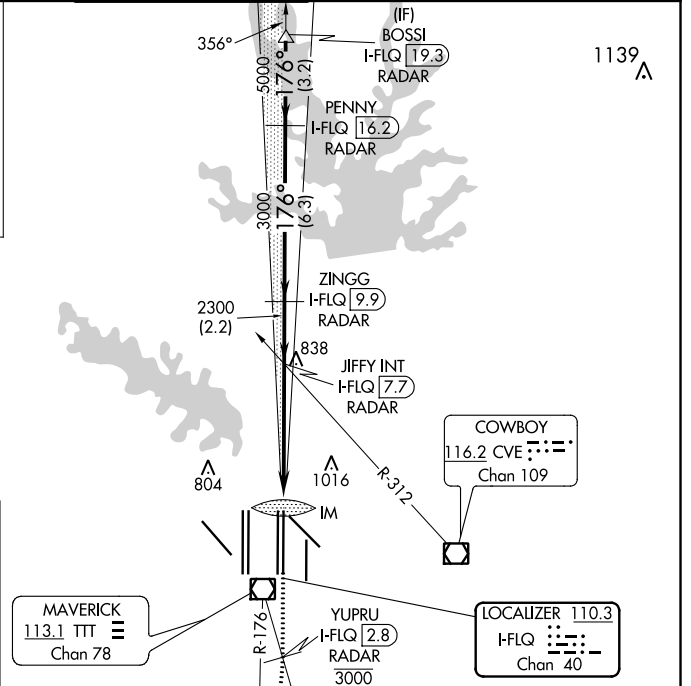
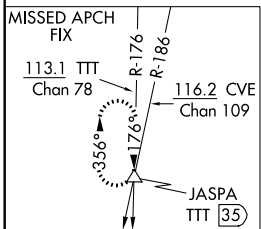
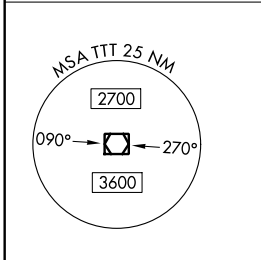
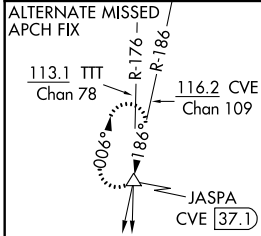
| | | | |
|---|------------------------|-----------------------------|--|
| LOC/DME I-FLQ 110.3 Chan 40 | APP CRS 176° | Rwy ldg TDZE Apt Elev | 13400 562 607 |
|---|------------------------|-----------------------------|--|

ILS RWY 17C (SA CAT I)

DALLAS-FORT WORTH INTL (DFW)

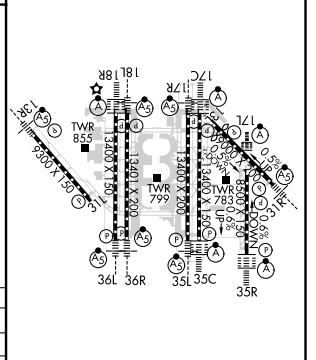
| | | |
|--|--------|---|
| DME and RADAR required. | ALSF-2 | MISSED APPROACH: Climb on heading 176° to cross YUPRU/2.8 DME/RADAR at or below 3000, then climbing right turn to 4000 on TTT VOR/DME R-176 to JASPA/TTT 35 DME and hold. |
| Simultaneous approach authorized with Rwy 17L, 18L/R. Requires specific OPSPEC, MSPEC, or LOA approval and use of HUD to DA. | | |

| | | | | | |
|--|------------------------------------|---|---|---------------------------|-------|
| D-ATIS ARR 123.775 DEP 135.925 | REGIONAL APP CON 127.075 | DFW TOWER 126.55 127.5 EAST 124.15 134.9 WEST | GND CON 121.65 121.8 EAST 121.85 WEST | CLNC DEL 128.25 | CPDLC |
|--|------------------------------------|---|---|---------------------------|-------|



| | | | | |
|-----------|----------------------|---|---|---|
| CATEGORY | A | B | C | D |
| S-ILS 17C | RA 144/14 150 DA 712 | | | |

| | |
|----------|----------|
| ELEV 607 | TDZE 562 |
|----------|----------|



SA CATEGORY I ILS - SPECIAL AIRCREW & AIRCRAFT CERTIFICATION REQUIRED

HIRL all Rwws
REIL Rwws 13L and 31L
TDZ/CL all Rwws except 13L and 31L

SC-2, 08 OCT 2020 to 05 NOV 2020

SC-2, 08 OCT 2020 to 05 NOV 2020