

LOC/DME I-PPZ <b>111.75</b> Chan 54 (Y)	APP CRS <b>176°</b>	Rwy Idg TDZE Apt Elev	<b>8500</b> <b>545</b> <b>607</b>
---	------------------------	-----------------------------	---

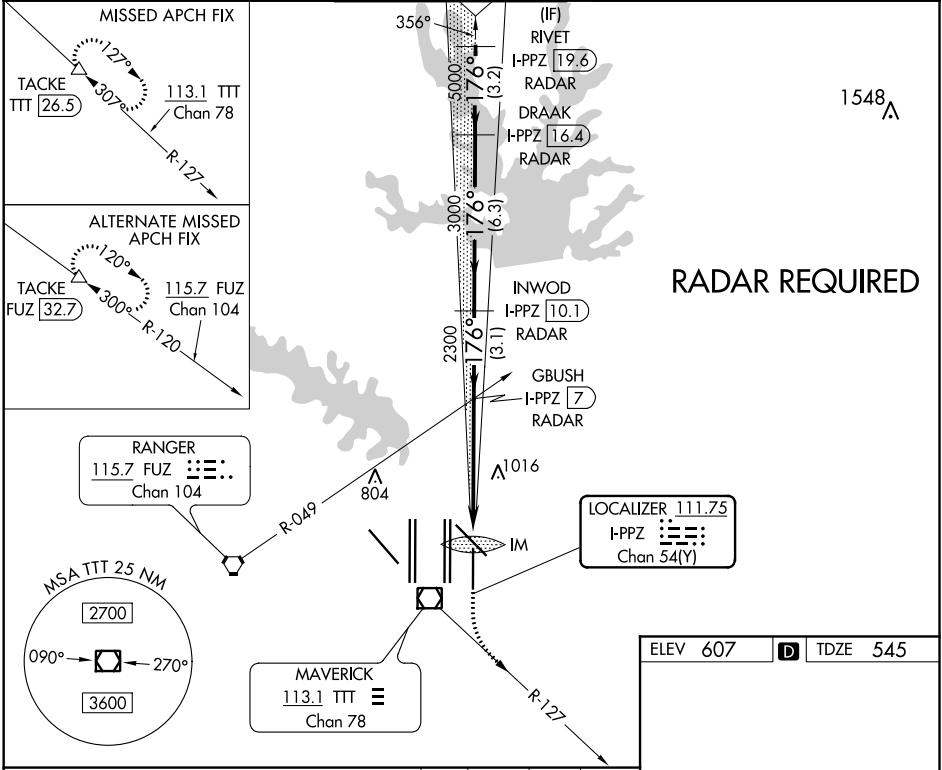
**ILS RWY 17L (SA CAT I)**  
DALLAS-FORT WORTH INTL (DFW)

Simultaneous approach authorized with Rwy 17C/R and Rwy 18L/R. DME required. Requires specific OPSPEC, MSPEC, or LOA approval and use of HUD to DA.

ALSF-2

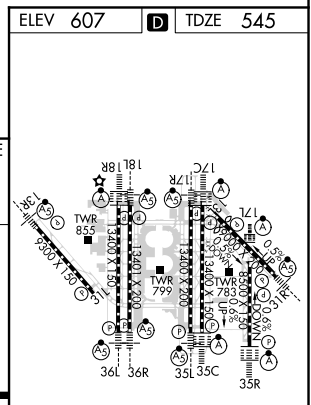
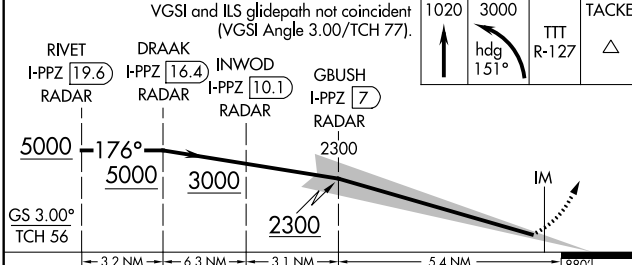
MISSED APPROACH: Climb to 1020 then climbing left turn to 3000 on heading 151° and TTT VOR/DME R-127 to TACKE/TTT 26.5 DME and hold.

D-ATIS ARR <b>123.775</b> DEP <b>135.925</b>	REGIONAL APP CON <b>119.4</b>	DFW TOWER <b>126.55 127.5 EAST</b> <b>124.15 134.9 WEST</b>	GND CON <b>121.65 121.8 EAST</b> <b>121.85 WEST</b>	CLNC DEL <b>128.25</b>	CPDLC
--	----------------------------------	---	---	---------------------------	-------



**RADAR REQUIRED**

ELEV 607	<b>D</b>	TDZE 545
----------	----------	----------



CATEGORY	A	B	C	D
S-ILS 17L	RA 165/14 150 DA 695			
<b>SA CATEGORY I ILS - SPECIAL AIRCREW &amp; AIRCRAFT CERTIFICATION REQUIRED</b>				

HIRL all Rwys  
REIL Rwy 13L and 31L  
TDZ/CL all Rwys except 13L and 31L

SC-2, 08 OCT 2020 to 05 NOV 2020

SC-2, 08 OCT 2020 to 05 NOV 2020