

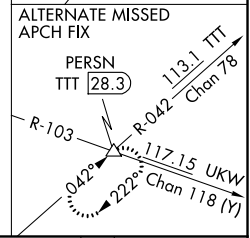
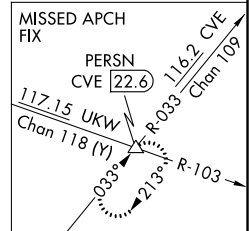
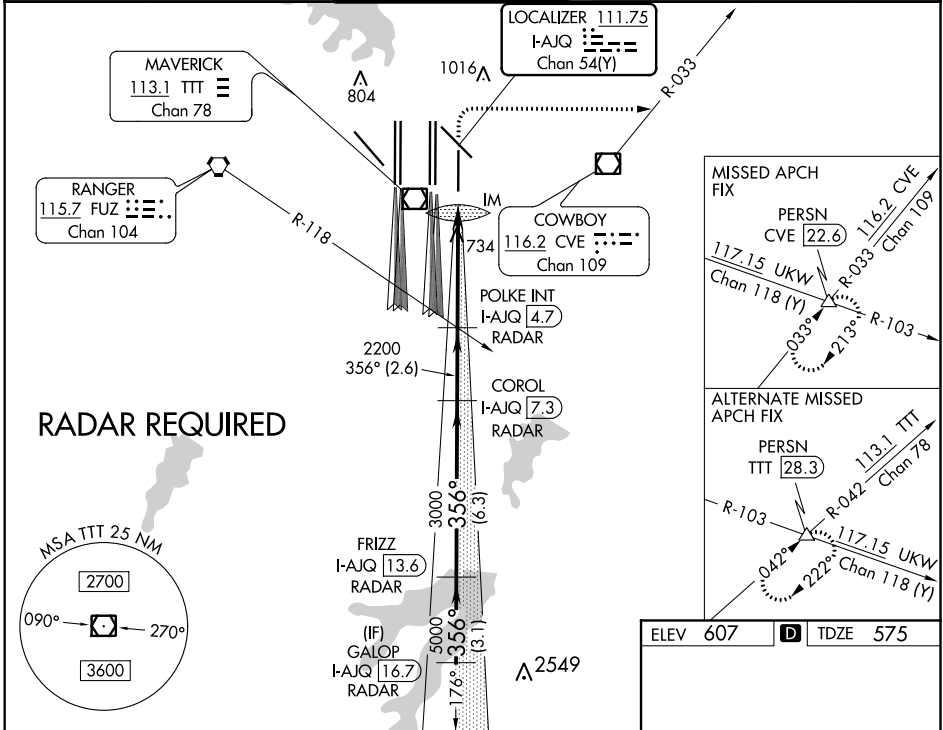
LOC/DME I-AJQ 111.75 Chan 54(Y)	APP CRS 356°	Rwy Idg TDZE Apt Elev 8500 575 607
--	------------------------	--

ILS RWY 35R (CAT II & III)

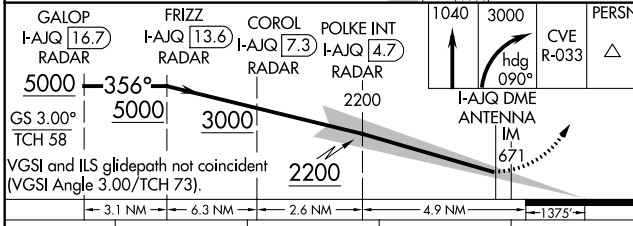
DALLAS-FORT WORTH INTL (DFW)

Simultaneous approach authorized with Rwy 36L/R and Rwy 35L/C. DME required.	ALSIF-2	MISSED APPROACH: Climb to 1040 then climbing right turn to 3000 on heading 090° and CVE VOR/DME R-033 to PERSN/CVE 22.6 DME and hold.

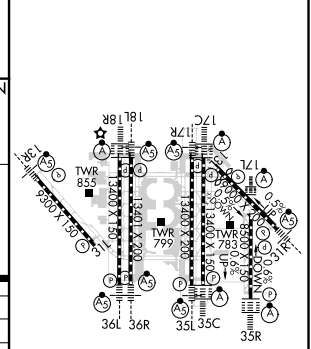
D-ATIS ARR 123.775 DEP 135.925	REGIONAL APP CON 119.4	DFW TOWER 126.55 127.5 EAST 124.15 134.9 WEST	GND CON 121.65 121.8 EAST 121.85 WEST	CLNC DEL 128.25	CPDLC
--	----------------------------------	---	---	---------------------------	-------



ELEV 607	D TDZE 575
----------	-------------------



CATEGORY	A	B	C	D
S-ILS 35R		CAT II RA 94/12	100 DA 675	
S-ILS 35R		CAT IIIa RVR 07		
S-ILS 35R		CAT IIIb RVR 06		
S-ILS 35R		CAT IIIc NA		



CATEGORY II & III ILS - SPECIAL AIRCREW & AIRCRAFT CERTIFICATION REQUIRED

HIRL all Rwys
REIL Rwys 13L and 31L
TDZ/CL all Rwys except 13L, and 31L

SC-2, 08 OCT 2020 to 05 NOV 2020

SC-2, 08 OCT 2020 to 05 NOV 2020