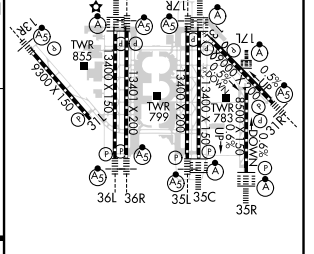
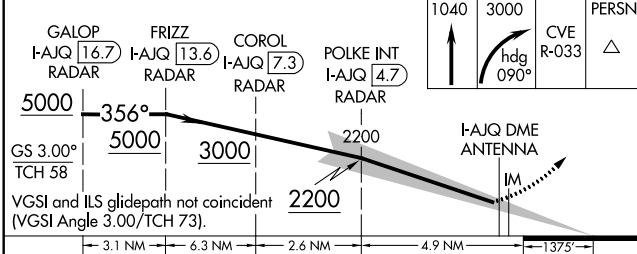
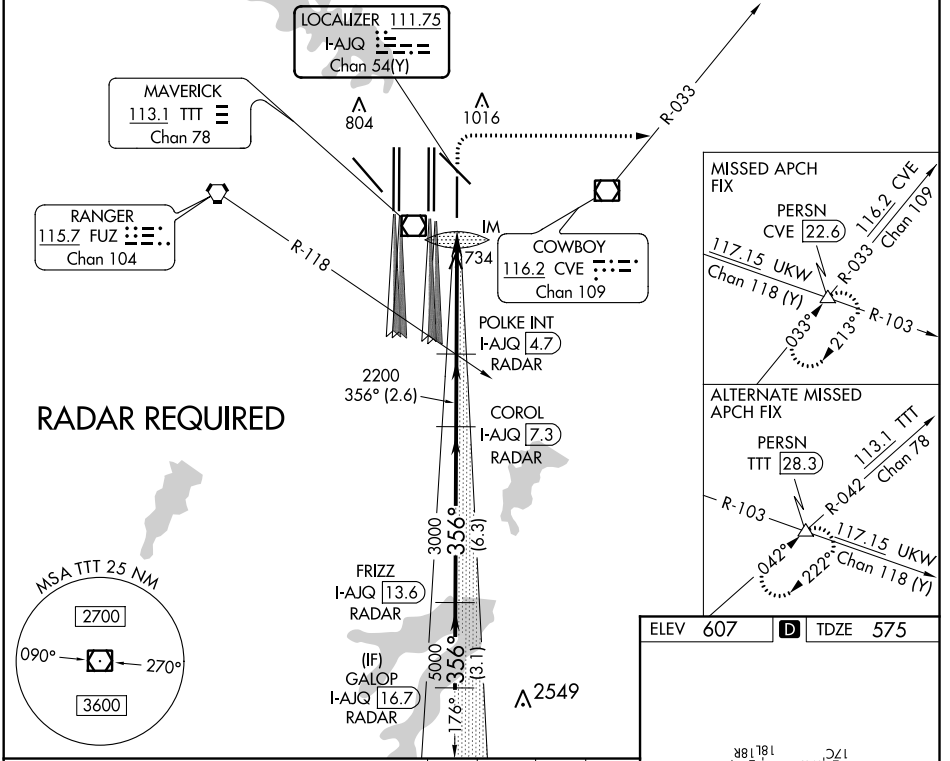


| | | |
|--|------------------------|--|
| LOC/DME I-AJQ 111.75 Chan 54(Y) | APP CRS 356° | Rwy Idg TDZE Apt Elev 8500 575 607 |
|--|------------------------|--|

ILS RWY 35R (SA CAT I)

DALLAS-FORT WORTH INTL (DFW)

| | | | | | |
|--|----------------------------------|---|--|---------------------------|-------|
| ▽ Simultaneous approach authorized with Rwy 36L/R and Rwy 35L/C. DME required. Requires specific OPSPEC, MSPEC, or LOA approval and use of HUD to DH. | | ALSF-2 | MISSED APPROACH: Climb to 1040 then climbing right turn to 3000 on heading 090° and CVE VOR/DME R-033 to PERSN/CVE 22.6 DME and hold. | | |
| D-ATIS ARR 123.775 DEP 135.925 | REGIONAL APP CON 119.4 | DFW TOWER 126.55 127.5 EAST 124.15 134.9 WEST | GND CON 121.65 121.8 EAST 121.85 WEST | CLNC DEL 128.25 | CPDLC |



| | | | | |
|-----------|----------------------|---|---|---|
| CATEGORY | A | B | C | D |
| S-ILS 35R | RA 144/14 150 DA 725 | | | |

SA CATEGORY I ILS - SPECIAL AIRCREW & AIRCRAFT CERTIFICATION REQUIRED

HIRL all Rwys
REIL Rwys 13L and 31L
TDZ/CL all Rwys except 13L, and 31L

SC-2, 08 OCT 2020 to 05 NOV 2020

SC-2, 08 OCT 2020 to 05 NOV 2020