

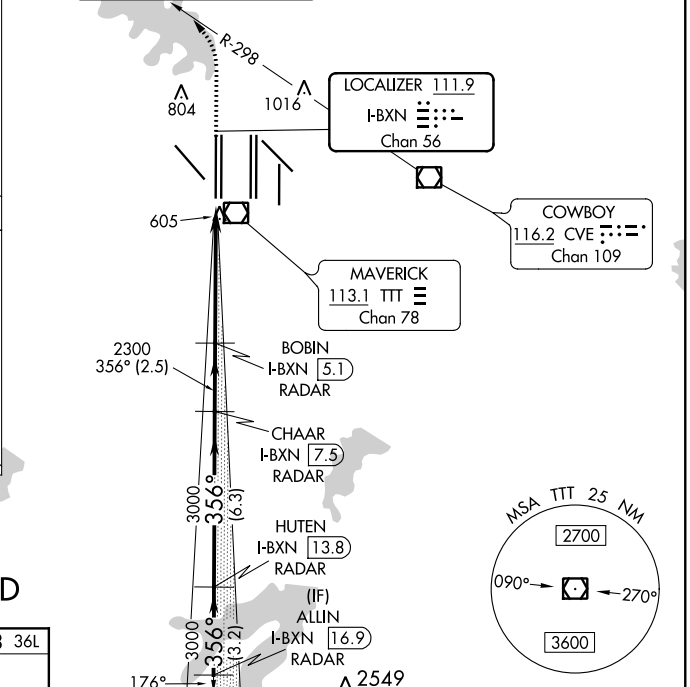
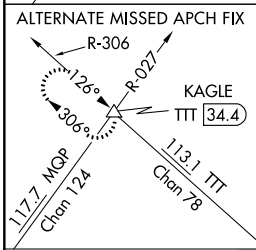
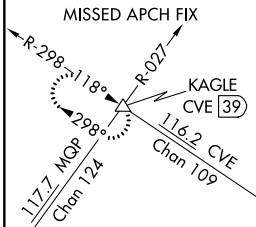
LOC/DME I-BXN 111.9 Chan 56	APP CRS 356°	Rwy Idg TDZE Apt Elev	13400 588 607
---	------------------------	-----------------------------	--

ILS RWY 36L (SA CAT II)

DALLAS-FORT WORTH INTL (DFW)

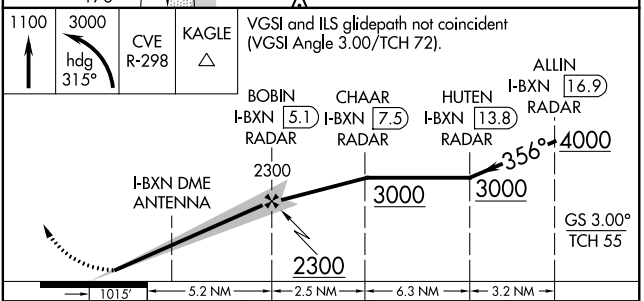
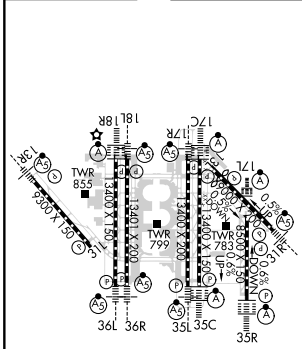
<p>▼ DME or RADAR required. Reduced Lighting: Requires specific OPSPEC, MSPEC, or LOA approval and use of autoland or HUD to touchdown.</p>	<p>MALSR</p>	<p>MISSED APPROACH: Climb to 1100 then climbing left turn to 3000 on heading 315° and CVE VOR/DME R-298 to KAGLE INT/ CVE VOR/DME 39 DME and hold.</p>
---	--------------	--

D-ATIS ARR 123.775 DEP 135.925	REGIONAL APP CON 118.425	DFW TOWER 126.55 127.5 EAST 124.15 134.9 WEST	GND CON 121.65 121.8 EAST 121.85 WEST	CLNC DEL 128.25	CPDLC
--	------------------------------------	---	---	---------------------------	-------



RADAR REQUIRED

ELEV 607	D	TDZE 588 36L
----------	----------	--------------



CATEGORY	A	B	C	D
S-ILS 36L	RA 107/12 100 DA 688			

SA CATEGORY II - ILS SPECIAL AIRCREW & AIRCRAFT CERTIFICATION REQUIRED

HIRL all Rwys
REIL Rwys 13L and 31L
TDZ/CL all Rwys except 13L and 31L