

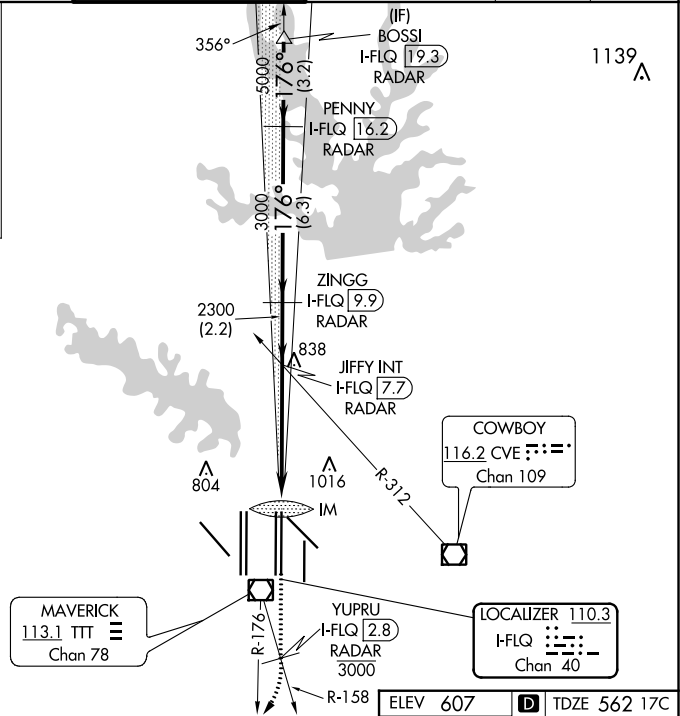
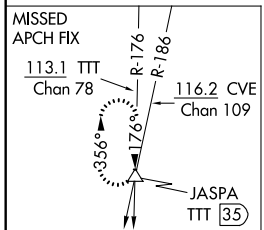
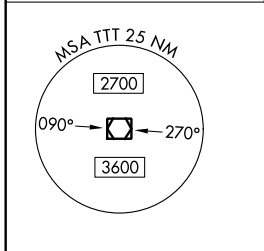
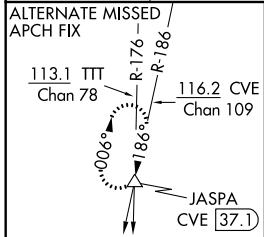
LOC/DME I-FLQ 110.3 Chan 40	APP CRS 176°	Rwy 17C Idg 13400 TDZE 562 Apt Elev 607	Rwy 17R Idg 13400 TDZE 567 Apt Elev 607
---	------------------------	--	--

ILS or LOC RWY 17C

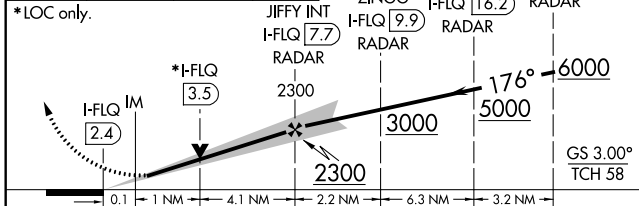
DALLAS-FORT WORTH INTL (DFW)

DME and RADAR required.		Rwy 17C ALSF-2	Rwy 17R MALS R	MISSED APPROACH: Climb on heading 176° to cross YUPRU/2.8 DME/RADAR at or below 3000, then climbing right turn to 4000 on TTT VOR/DME R-176 to JASPA/TTT 35 DME and hold.
Simultaneous approach authorized with Rwy 17L, 18L/R. Inop table does not apply to sidestep 17R Cats A and B.		(A)	(A)	

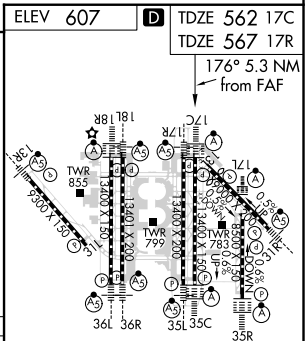
D-ATIS ARR 123.775 DEP 135.925	REGIONAL APP CON 127.075	DFW TOWER 126.55 127.5 EAST 124.15 134.9 WEST	GND CON 121.65 121.8 EAST 121.85 WEST	CLNC DEL 128.25	CPDLC
--	------------------------------------	---	---	---------------------------	-------



↑ hdg 176°	YUPRU I-FLQ 2.8 3000	4000 TTT R-176	JASPA	VGSI and ILS glidepath not coincident (VGSI Angle 3.00/TCH 74).	BOSSI I-FLQ 19.3 RADAR
----------------------	--------------------------------	-------------------	-------	---	----------------------------------



CATEGORY	A	B	C	D
S-ILS 17C	762/18 200 (200-½)			
S-LOC 17C	1000/24 438 (400-½)	1000/40 438 (400-¾)		
SIDESTEP 17R	1140/55 573 (600-1)		1140-1½ 573 (600-1½)	



HIRL all Rwys
REIL Rws 13L and 31L
TDZ/CL all Rws except 13L and 31L

SC-2, 08 OCT 2020 to 05 NOV 2020

SC-2, 08 OCT 2020 to 05 NOV 2020