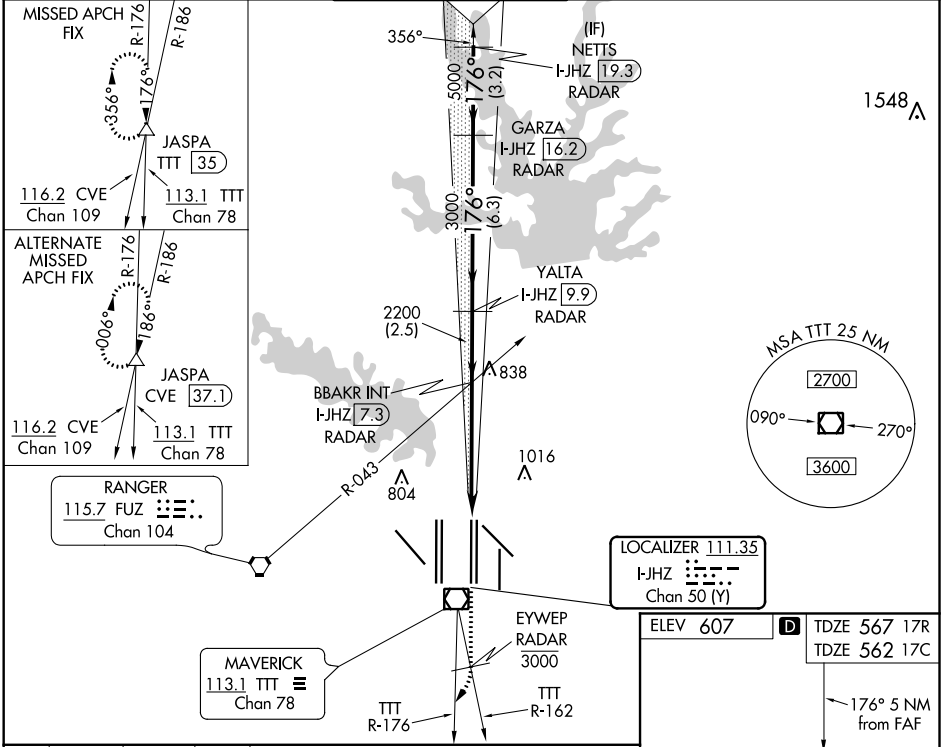


LOC/DME I-JHZ 111.35 Chan 50 (Y)	APP CRS 176°	Rwy 17R Idg 13400 TDZE 567 Apt Elev 607	Rwy 17C Idg 13400 TDZE 562 Apt Elev 607
---	------------------------	--	--

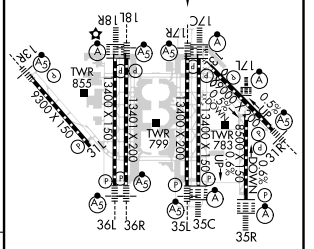
ILS or LOC RWY 17R

DALLAS-FORT WORTH INTL (DFW)

DME and RADAR required.		Rwy 17R MALSR	Rwy 17C ALSF-2	MISSED APPROACH: Climb on heading 176° to cross EYWEP/RADAR at or below 3000, then climbing right turn to 4000 on TTT VOR/DME R-176 to JASPA/TTT 35 DME and hold.	
Simultaneous approach authorized with Rwy 17L, 18L/R.				D-ATIS ARR 123.775 DEP 135.925	REGIONAL APP CON 127.075
		DFW TOWER 126.55 127.5 EAST 124.15 134.9 WEST		GND CON 121.65 121.8 EAST 121.85 WEST	
				CLNC DEL 128.25	CPDLC



hdg 176° EYWEP RADAR 3000 4000 TTT R-176 *LOC only.	JASPA	VGS1 and ILS glidepath not coincident (VGS1 Angle 3.00/TCH 68).		NETTS I-JHZ [19.3] RADAR
	2200 3000 5000 GS 3.00° TCH 54	BBAKR INT I-JHZ [7.3] RADAR YALTA I-JHZ [9.9] RADAR GARZA I-JHZ [16.2] RADAR	1.6 NM 3.4 NM 2.5 NM 6.3 NM 3.2 NM	
CATEGORY	A	B	C	D
S-ILS 17R		767/18	200 (200-½)	
S-LOC 17R	1140/24	573 (600-½)	1140-1¼	573 (600-1¼)
SIDESTEP 17C	1140-1	578 (600-1)	1140-1½	1140-2 578 (600-2)



HIRL all Rwys
 REL Rwys 13L and 31L
 TDZ/CL all Rwys except 13L and 31L

SC-2, 08 OCT 2020 to 05 NOV 2020

SC-2, 08 OCT 2020 to 05 NOV 2020