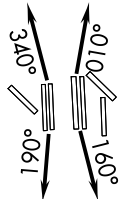


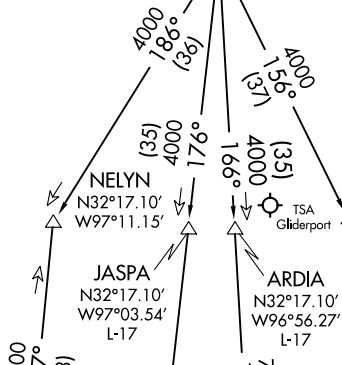
# JOE POOL ONE DEPARTURE

**TOP ALTITUDE:**  
RWY 13L/R, 17L/C/R, 18L/R,  
35L/C/R, 36L/R: 10000  
RWY 31L/R: 5000

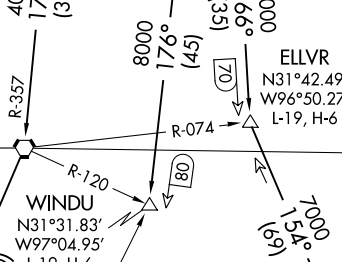
D-ATIS DEP 135.925  
CLNC DEL 128.25  
CPDLC  
GND CON  
(EAST) 121.65 121.8  
(WEST) 121.85  
DFW TOWER  
(EAST) 126.55 127.5  
(WEST) 124.15 134.9  
REGIONAL DEP CON  
125.125 353.95  
(Rwy 17R/C)  
125.125 353.95  
(Rwy 18L/R)  
126.475 363.15  
(Rwy 36R/L)  
118.55 290.35  
(Rwy 35L/C)



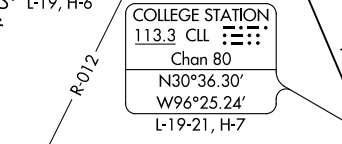
**MAVERICK**  
113.1 TTT  
Chan 78  
N32°52.15'  
W97°02.43'



**WACO**  
115.3 ACT  
Chan 100  
N31°39.74'  
W97°16.14'  
L-19, H-6



**HOARY**  
N30°34.63'  
W97°46.52'  
L-19-21, H-7



NOTE: RADAR and DME required.  
NOTE: Props: Expect KEENE or TRI-GATE departure.  
NOTE: Maintain 240K until leaving 5000.

**TAKEOFF MINIMUMS**  
Rwys 13L/R, 17L/C/R, 18L/R, 31L/R,  
35L/C, 36L/R: Standard.  
Rwy 35R: Standard with a minimum climb  
of 240' per NM to 1200.

**NAVASOTA**  
115.9 TNV  
Chan 106

(NARRATIVE ON FOLLOWING PAGE)

NOTE: Chart not to scale.

SC-2, 08 OCT 2020 to 05 NOV 2020

SC-2, 08 OCT 2020 to 05 NOV 2020

# JOE POOL ONE DEPARTURE