

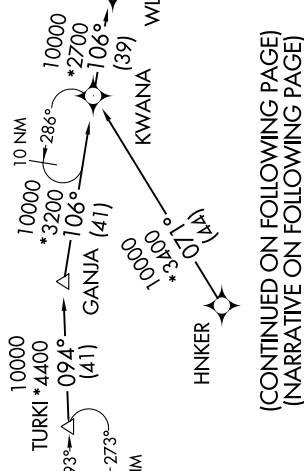
# JOVEM FOUR ARRIVAL (RNAV) Transition Routes

SC-2, 08 OCT 2020 to 05 NOV 2020

NOTE: For use when DFW is operating in a north flow. When DFW is operating in a south flow, file and expect the VKTRY RNAV STAR.

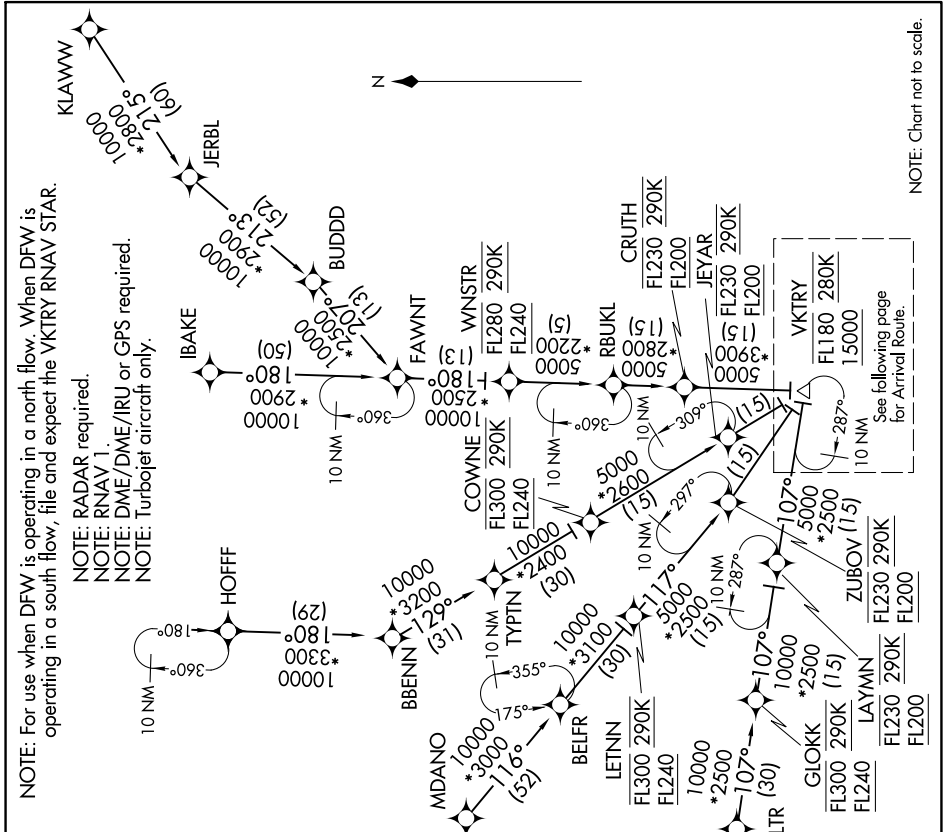
- NOTE: RADAR required.
- NOTE: RNAV 1.
- NOTE: DME/DME/IRU or GPS required.
- NOTE: Turbojet aircraft only.

D-ATIS ARR 123.775 REGIONAL APP CON 119.875 284.65
<u>BELFR TRANSITION (BELFR.JOVEM4):</u> (ATC assigned only.)
<u>FAWNT TRANSITION (FAWNT.JOVEM4):</u> (ATC assigned only.)
<u>HINKER TRANSITION (HINKER.JOVEM4):</u> HOFF TRANSITION (HOFF.JOVEM4):
<u>IBAKE TRANSITION (IBAKE.JOVEM4):</u> (ATC assigned only.)
<u>KLAWW TRANSITION (KLAWW.JOVEM4):</u> (ATC assigned only.)
<u>MDANO TRANSITION (MDANO.JOVEM4):</u> RBUKL TRANSITION (RBUKL.JOVEM4):
(For OKC Terminal Area Departures only.)
<u>TURKI TRANSITION (TURKI.JOVEM4):</u> TYPTN TRANSITION (TYPTN.JOVEM4):
(ATC assigned only.)
<u>WILTR TRANSITION (WILTR.JOVEM4):</u> (ATC assigned only.)



(CONTINUED ON FOLLOWING PAGE)  
(NARRATIVE ON FOLLOWING PAGE)

# JOVEM FOUR ARRIVAL (RNAV) Transition Routes



NOTE: Chart not to scale.

SC-2, 08 OCT 2020 to 05 NOV 2020

See following page for Arrival Route.