

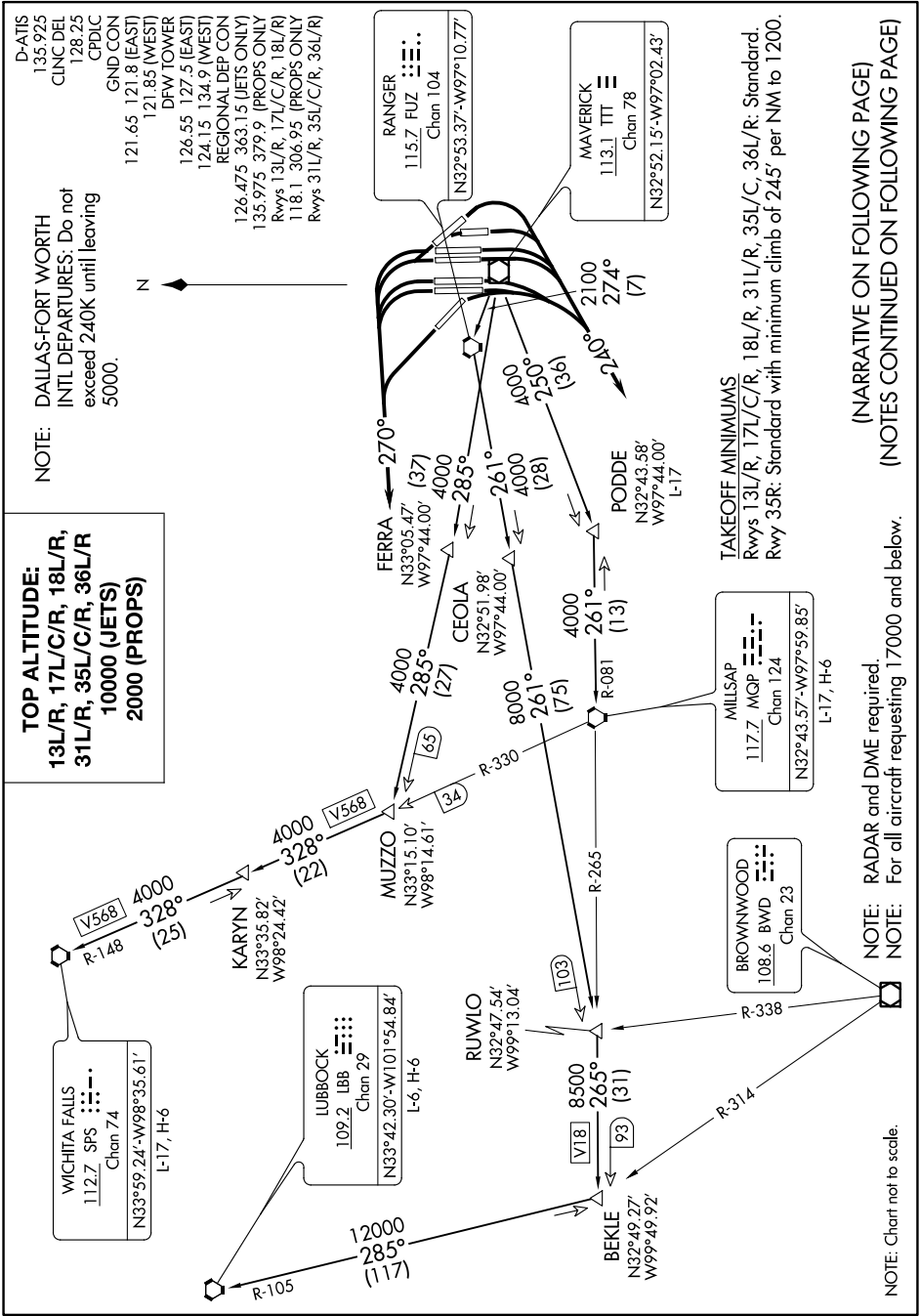
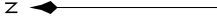
# KINGDOM SEVEN DEPARTURE

0200 \ 0N 05 OCT 2020 10 00 'Z-05

**TOP ALTITUDE:**  
**13L/R, 17L/C/R, 18L/R,**  
**31L/R, 35L/C/R, 36L/R**  
**10000 (JETS)**  
**2000 (PROPS)**

**NOTE:** DALLAS-FORT WORTH INTL DEPARTURES: Do not exceed 240K until leaving 5000.

**D-ATIS**  
 135.925  
 CINC DEL  
 128.25  
 CPD/C  
 GND CON  
 121.65 121.8 (EAST)  
 121.85 (WEST)  
 DFW TOWER  
 126.55 127.5 (EAST)  
 124.15 134.9 (WEST)  
 REGIONAL DEP CON  
 126.475 363.15 (JETS ONLY)  
 135.975 379.9 (PROPS ONLY)  
 Rwys 13L/R, 17L/C/R, 18L/R  
 118.1 306.95 (PROPS ONLY)  
 Rwys 31L/R, 35L/C/R, 36L/R



**NOTE:** RADAR and DME required.  
**NOTE:** For all aircraft requesting 17000 and below.

**TAKEOFF MINIMUMS**  
 Rwys 13L/R, 17L/C/R, 18L/R, 31L/R, 35L/C, 36L/R: Standard.  
 Rwy 35R: Standard with minimum climb of 245' per NM to 1200.

**NOTE:** RADAR and DME required.  
**NOTE:** For all aircraft requesting 17000 and below.

NOTE: Chart not to scale.

# KINGDOM SEVEN DEPARTURE

SC-2, 08 OCT 2020 to 05 NOV 2020

(NARRATIVE ON FOLLOWING PAGE)

(NOTES CONTINUED ON FOLLOWING PAGE)