

(KNEAD.PAWLZ3) 20198

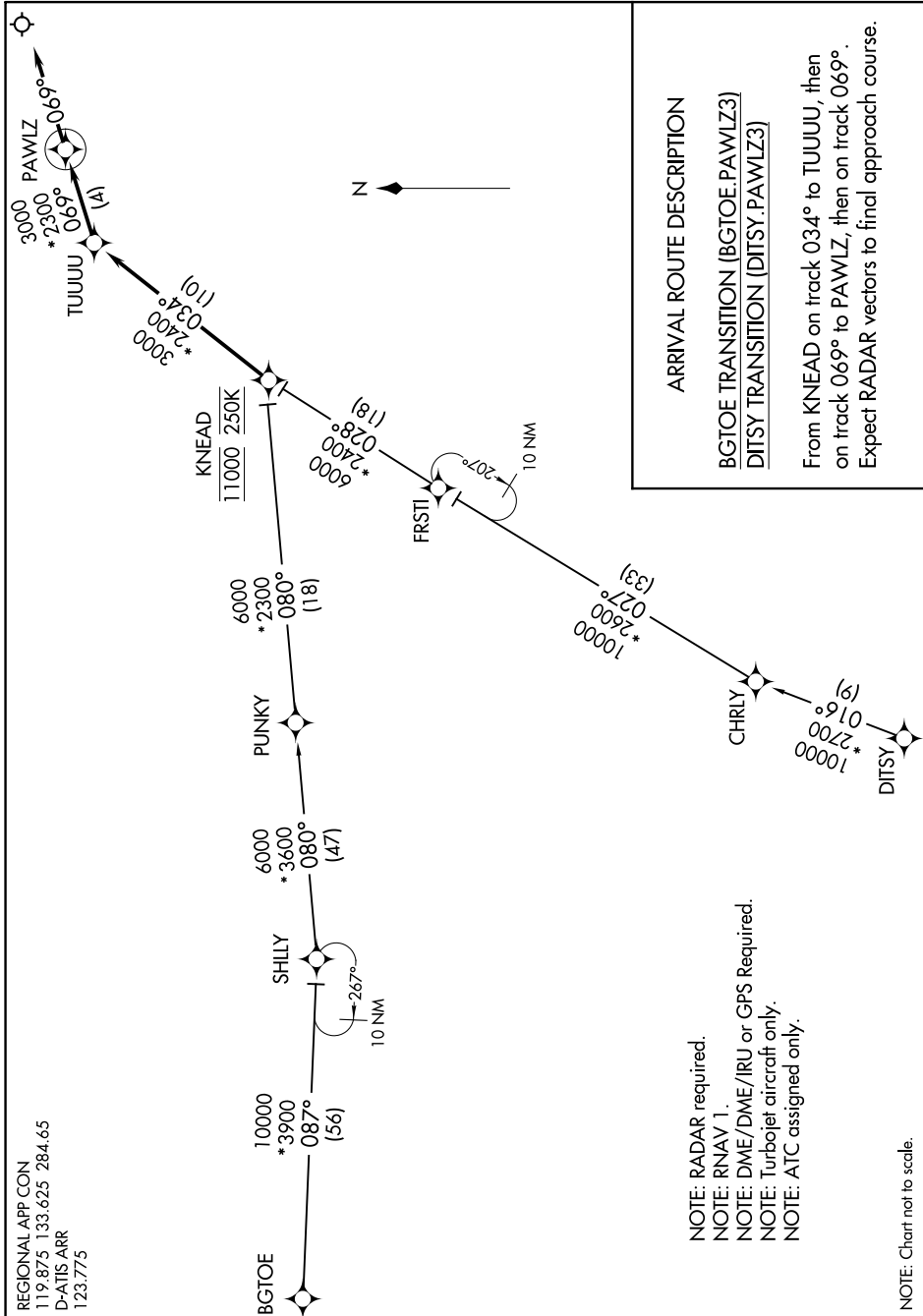
PAWLZ THREE ARRIVAL (RNAV)

AL-6039 (FAA)

DALLAS-FORT WORTH INTL (DFW)
DALLAS-FORT WORTH, TEXAS

SC-2, 08 OCT 2020 to 05 NOV 2020

REGIONAL APP CON
119.875 133.625 284.65
D-ATIS ARR
123.775



ARRIVAL ROUTE DESCRIPTION

BGTOE TRANSITION (BGTOE.PAWLZ3)
DITSY TRANSITION (DITSY.PAWLZ3)

From KNEAD on track 034° to TUUUU, then on track 069° to PAWLZ, then on track 069°. Expect RADAR vectors to final approach course.

- NOTE: RADAR required.
- NOTE: RNAV 1.
- NOTE: DME/DME/IRU or GPS Required.
- NOTE: Turbojet aircraft only.
- NOTE: ATC assigned only.

NOTE: Chart not to scale.

SC-2, 08 OCT 2020 to 05 NOV 2020

PAWLZ THREE ARRIVAL (RNAV)

(KNEAD.PAWLZ3) 31MAR16

DALLAS-FORT WORTH, TEXAS
DALLAS-FORT WORTH INTL (DFW)