

WAAS CH 40008 W17B	APP CRS 176°	Rwy Idg TDZE Apt Elev	8500 545 607
----------------------------------------	------------------------	-----------------------------	-----------------------------------------

RNAV (GPS) RWY 17L

DALLAS-FORT WORTH INTL (DFW)

⚠ For uncompensated Baro-VNAV systems, LNAV/VNAV NA below -5°C (23°F) or above 54°C (130°F). DME/DME RNP-0.3 NA. Simultaneous approach authorized with Rwy 17C/R and Rwy 18L/R. LNAV procedure NA during simultaneous operations. Use of FD or AP providing RNAV track guidance required during simultaneous operations.

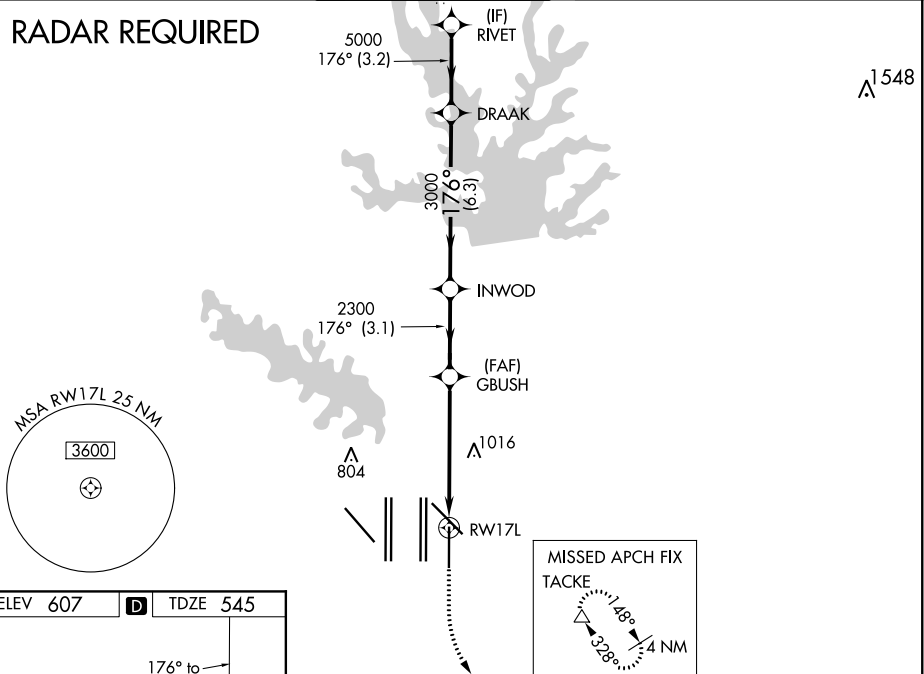
ALS-F-2



MISSED APPROACH: Climb to 1020 then climbing left turn to 3000 direct TACKE and hold.

D-ATIS ARR 123.775 DEP 135.925	REGIONAL APP CON 119.4	DFW TOWER 126.55 127.5 EAST 124.15 134.9 WEST	GND CON 121.65 121.8 EAST 121.85 WEST	CLNC DEL 128.25	CPDLC
----------------------------------------------------	----------------------------------	-------------------------------------------------------------------	-----------------------------------------------------------	---------------------------	-------

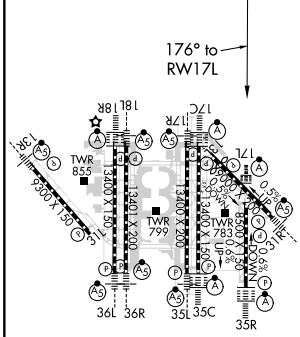
RADAR REQUIRED



SC-2, 08 OCT 2020 to 05 NOV 2020

SC-2, 08 OCT 2020 to 05 NOV 2020

ELEV 607	D	TDZE 545
-----------------	----------	-----------------



HIRL all Rwys
REIL Rwys 13L and 31L
TDZ/CL all Rwys except 13L and 31L

1020	3000	TACKE	VGSi and RNAV glidepath not coincident (VGSi Angle 3.00/TCH 77).	
*LNAV only.		GBUSH	INWOD	DRAAK RIVET
*2 NM to RWY 17L		2300	3000	5000
RWY 17L		2300	3000	5000
-2 NM		3.4 NM	3.1 NM	-6.3 NM -3.2 NM
GP 3.00°	TCH 56			
CATEGORY	A	B	C	D
LPV DA	745/18		200 (200-½)	
LNAV/VNAV DA	1063/60		518 (500-1½)	
LNAV MDA	1240/24	695 (700-½)	1240-1½	695 (700-1½)