

WAAS CH <b>99407</b> <b>W18B</b>	APP CRS <b>176°</b>	Rwy Idg <b>13400</b> TDZE <b>607</b> Apt Elev <b>607</b>
--	------------------------	--

# RNAV (GPS) RWY 18R

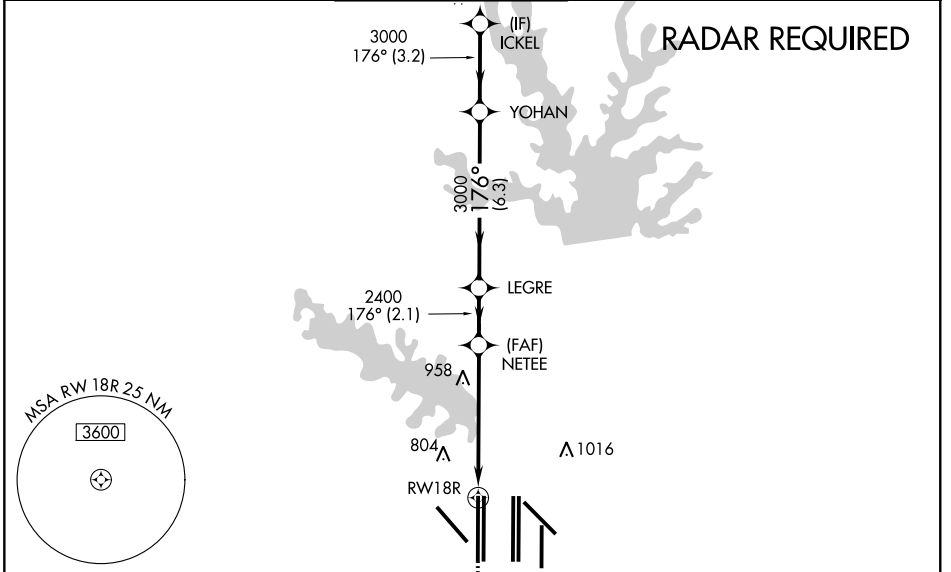
DALLAS-FORT WORTH INTL (DFW)

**▽** For uncompensated Baro-VNAV systems, LNAV/VNAV NA below -4°C (25°F) or above 54°C (130°F). For inop ALSF, increase LNAV Cat C/D visibility to 1¼ mile. Simultaneous approach authorized with Rwy 17L/C/R. DME/DME RNP-0.3 NA. LNAV procedure NA during simultaneous operations. Use of FD or AP providing RNAV track guidance required during simultaneous operations.

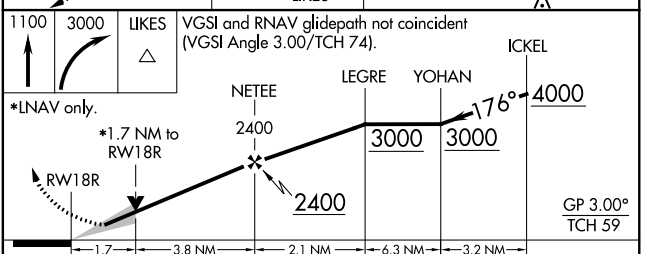
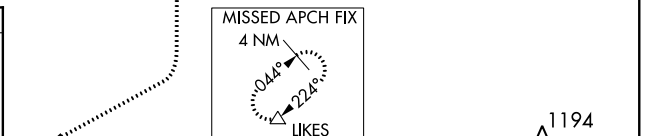
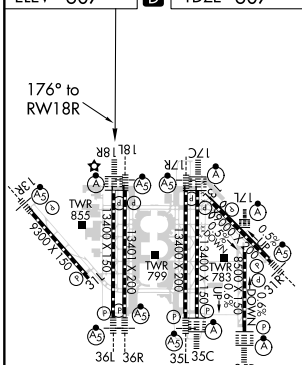
ALSF-2

MISSED APPROACH: Climb to 1100 then climbing right turn to 3000 direct LIKES and hold.

D-ATIS ARR <b>123.775</b> DEP <b>135.925</b>	REGIONAL APP CON <b>118.425</b>	DFW TOWER <b>126.55</b> <b>127.5</b> EAST <b>124.15</b> <b>134.9</b> WEST	GND CON <b>121.65</b> <b>121.8</b> EAST <b>121.85</b> WEST	CLNC DEL <b>128.25</b>	CPDLC
--	------------------------------------	---	--	---------------------------	-------



ELEV 607 **D** TDZE 607



CATEGORY	A	B	C	D
LPV DA		807/18	200 (200-½)	
LNAV/VNAV DA		980/40	373 (400-¾)	
LNAV MDA	1220/24	613 (700-½)	1220-1¾	613 (700-1¾)

HIRL all Rwys  
REIL Rwys 13L and 31L  
TDZ/CL all Rwys except 13L and 31L

SC-2, 08 OCT 2020 to 05 NOV 2020

SC-2, 08 OCT 2020 to 05 NOV 2020