

|  |                        |  |
|--|------------------------|--|
| WAAS<br>CH <b>93805</b><br><b>W36B</b> | APP CRS<br><b>356°</b> | Rwy Idg <b>13400</b><br>TDZE <b>588</b><br>Apt Elev <b>607</b> |
|--|------------------------|--|

# RNAV (GPS) RWY 36L

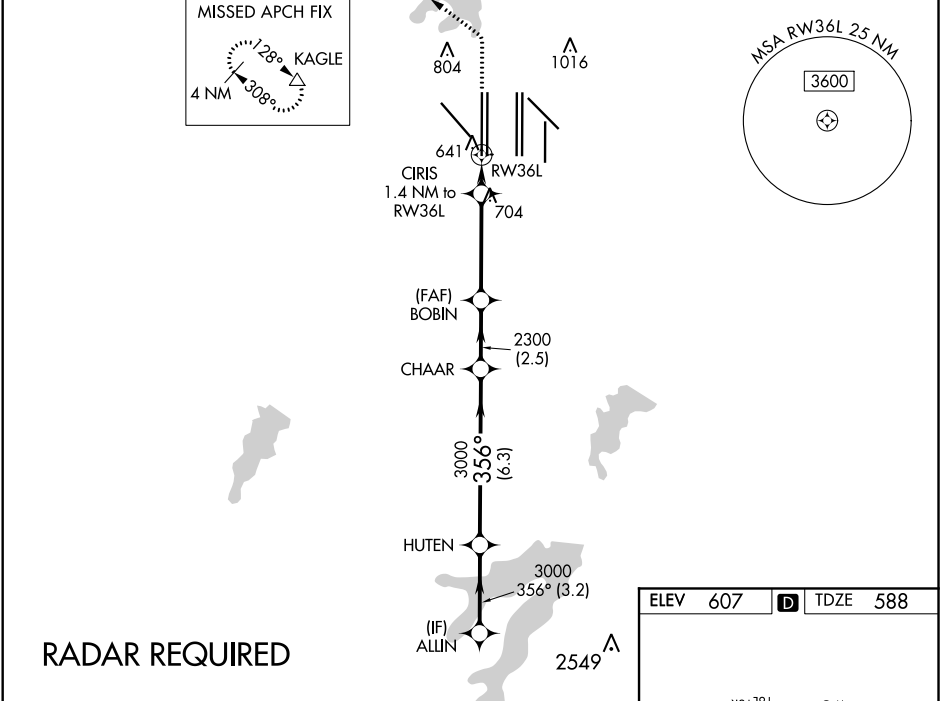
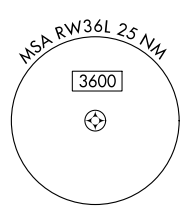
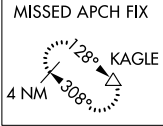
DALLAS-FORT WORTH INTL (DFW)

▼ For uncompensated Baro-VNAV systems, LNAV/VNAV NA below -4°C (25°F) or above 54°C (130°F). For inop MALSR, increase LNAV Cat C/D visibility to RVR 5500. Simultaneous approach authorized with Rwy 35L/C/R. DME/DME RNP-0.3 NA. LNAV procedure NA during simultaneous operations. Use of FD or AP providing RNAV track guidance required during simultaneous operations.



MISSED APPROACH: Climb to 1100 then climbing left turn to 3000 direct KAGLE and hold.

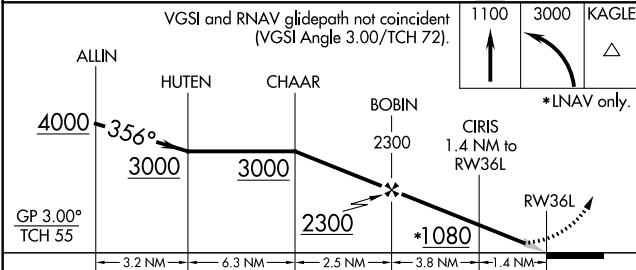
|  |                                    |   |   |                           |       |
|--|------------------------------------|---|---|---------------------------|-------|
| D-ATIS<br>ARR <b>123.775</b><br>DEP <b>135.925</b> | REGIONAL APP CON<br><b>118.425</b> | DFW TOWER<br><b>126.55 127.5 EAST</b><br><b>124.15 134.9 WEST</b> | GND CON<br><b>121.65 121.8 EAST</b><br><b>121.85 WEST</b> | CLNC DEL<br><b>128.25</b> | CPDLC |
|--|------------------------------------|---|---|---------------------------|-------|



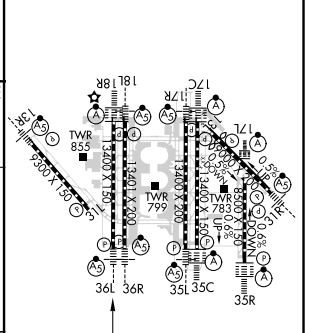
**RADAR REQUIRED**

SC-2, 08 OCT 2020 to 05 NOV 2020

SC-2, 08 OCT 2020 to 05 NOV 2020



|          |                   |
|----------|-------------------|
| ELEV 607 | <b>D</b> TDZE 588 |
|----------|-------------------|



| CATEGORY     | A      | B             | C             | D             |
|--------------|--------|---------------|---------------|---------------|
| LPV DA       |        | 788/18        | 200 (200-1/2) |               |
| LNAV/VNAV DA |        | 987/45        | 399 (400-2/3) |               |
| LNAV MDA     | 960/24 | 372 (400-1/2) | 960/35        | 372 (400-2/3) |

HIRL all Rwy's  
REIL Rwy's 13L and 31L  
TDZ/CL all Rwy's except 13L and 31L