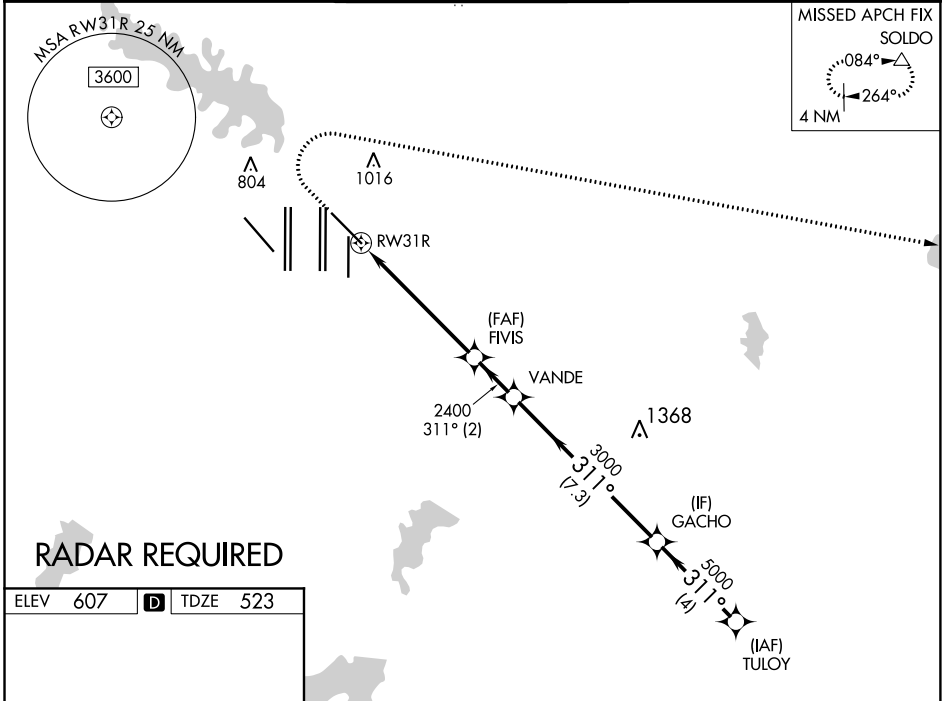


APP CRS <b>311°</b>	Rwy Idg <b>8373</b>
	TDZE <b>523</b>
	Apt Elev <b>607</b>

# RNAV (RNP) Z RWY 31R

DALLAS-FORT WORTH INTL (DFW)

<p>▼ For uncompensated Baro-VNAV systems, procedure NA below -4°C (25°F) or above 54°C (130°F). For inop MALSR, increase RNP 0.14 all Cats visibility to RVR 5100, RNP 0.23 all Cats visibility to 1 3/8 mile, RNP 0.30 all Cats visibility to 1 1/2 mile. Simultaneous approach authorized with Rwy 31L. GPS Required. Use of FD or AP providing RNAV track guidance required during simultaneous operations.</p>		<p>MALSR</p>	<p>MISSED APPROACH: Climb to 1100 then climbing right turn to 3000 direct SOLDO and hold.</p>		
D-ATIS ARR <b>123.775</b> DEP <b>135.925</b>	REGIONAL APP CON <b>135.5 125.2</b>	DFW TOWER <b>126.55 127.5 EAST</b> <b>124.15 134.9 WEST</b>	GND CON <b>121.65 121.8 EAST</b> <b>121.85 WEST</b>	CLNC DEL <b>128.25</b>	CPDLC

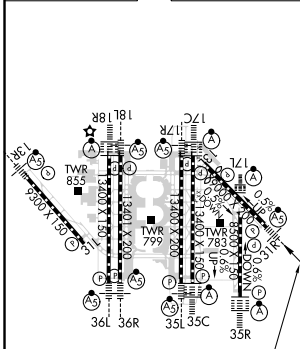


SC-2, 08 OCT 2020 to 05 NOV 2020

SC-2, 08 OCT 2020 to 05 NOV 2020

**RADAR REQUIRED**

ELEV 607	<b>D</b>	TDZE 523
----------	----------	----------



HIRL all Rwys  
REIL Rwys 13L and 31L  
TDZ/CL all Rwys except 13L and 31L

1100	3000	SOLDO	VGSI and RNAV glidepath not coincident (VGSI Angle 3.00/TCH 69).	
			GACHO TULYO	
			VANDE	
			FIVIS	
			RW31R	
			2400	
			311°	
			311°	
			5000	
			5000	
			GP 3.00°	
			TCH 53	
			5.8 NM	
			2 NM	
			7.3 NM	
			4 NM	
CATEGORY	A	B	C	D
RNP 0.14 DA		838/27	315 (300-5%)	
RNP 0.23 DA		928/44	405 (400-7%)	
RNP 0.30 DA		987/55	464 (400-1)	

**AUTHORIZATION REQUIRED**