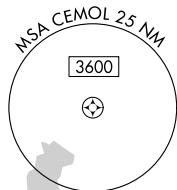
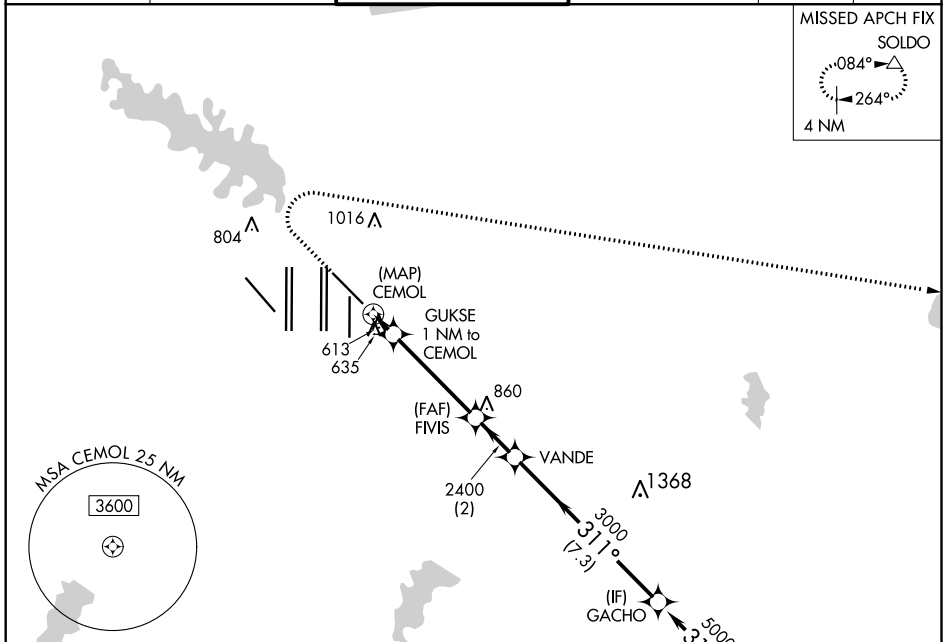
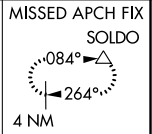


WAAS CH <b>90342</b> <b>W31B</b>	APP CRS <b>311°</b>	Rwy Idg <b>8373</b> TDZE <b>523</b> Apt Elev <b>607</b>
--	------------------------	---

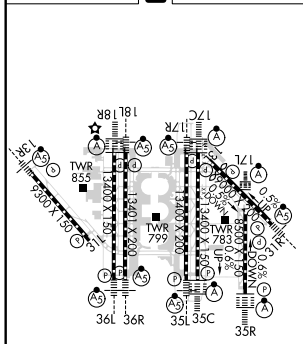
# RNAV (GPS) Y RWY 31R

DALLAS-FORT WORTH INTL (DFW)

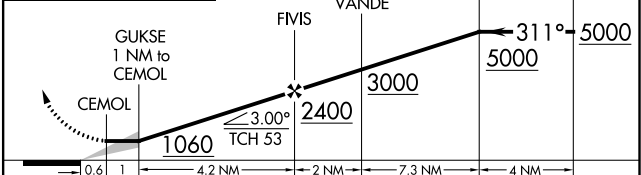
RNP APCH. ▼ For inop ALS, increase LP Cat C/D visibility to RVR 5500 and LNAV Cat C/D visibility to RVR 6000.		MALSR 	MISSED APPROACH: Climb to 1000 then climbing right turn to 3000 direct SOLDO and hold.		
D-ATIS ARR <b>123.775</b> DEP <b>135.925</b>	REGIONAL APP CON <b>135.5 125.2</b>	DFW TOWER <b>126.55 127.5 EAST</b> <b>124.15 134.9 WEST</b>	GND CON <b>121.65 121.8 EAST</b> <b>121.85 WEST</b>	CLNC DEL <b>128.25</b>	CPDLC



ELEV 607	<b>D</b>	TDZE 523
----------	----------	----------



1000	3000	SOLDO	VGSI and descent angles not coincident (VGSI Angle 3.00/TCH 69).



CATEGORY	A	B	C	D
LP MDA	880/24	357 (300-½)	880/30	357 (300-¾)
LNAV MDA	940/24	417 (400-½)	940/40	417 (400-¾)

HIRL all Rwys  
REIL Rwys 13L and 31L  
TDZ/CL all Rwys except 13L and 31L

SC-2, 08 OCT 2020 to 05 NOV 2020

SC-2, 08 OCT 2020 to 05 NOV 2020