

(GREGS.SHAAM2) 17117

SHAAM TWO ARRIVAL (RNAV)

AL-6039 (FAA)

DALLAS-FORT WORTH INTL (DFW)

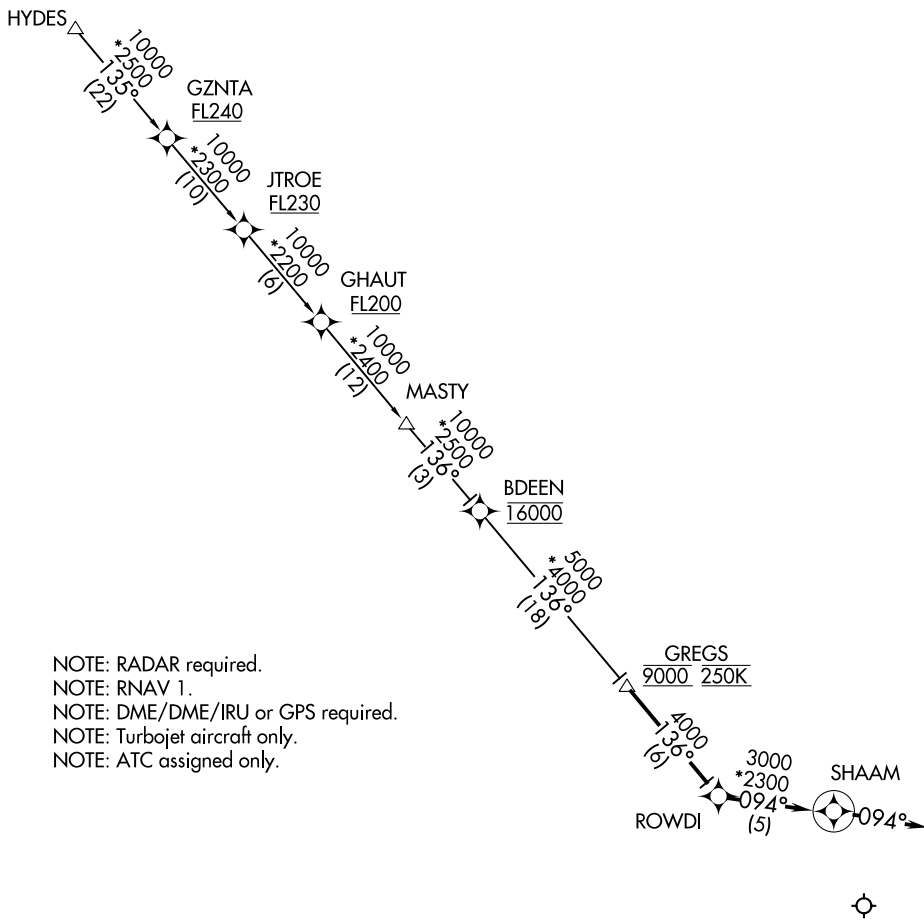
DALLAS-FORT WORTH, TEXAS

D-ATIS

123.775

REGIONAL APP CON

119.875 284.65



- NOTE: RADAR required.
- NOTE: RNAV 1.
- NOTE: DME/DME/IRU or GPS required.
- NOTE: Turbojet aircraft only.
- NOTE: ATC assigned only.

NOTE: Chart not to scale.

ARRIVAL ROUTE DESCRIPTION

GZNTA TRANSITION (GZNTA.SHAAM2)

HYDES TRANSITION (HYDES.SHAAM2)

From GREGS on track 136° to ROWDI, then on track 094° to SHAAM, then on track 094°. Expect RADAR vectors to final approach course.

SHAAM TWO ARRIVAL (RNAV)

(GREGS.SHAAM2) 25JUN15

DALLAS-FORT WORTH, TEXAS

DALLAS-FORT WORTH INTL (DFW)

SC-2, 08 OCT 2020 to 05 NOV 2020

SC-2, 08 OCT 2020 to 05 NOV 2020