

VKTRY TWO ARRIVAL (RNAV) Transition Routes

SC-2, 08 OCT 2020 to 05 NOV 2020

D-ATIS ARR
123.775
REGIONAL APP CON
119.875 284.65

BELFR TRANSITION (BELFR.VKTRY2):

(ATC assigned only.)

FAWNT TRANSITION (FAWNT.VKTRY2):

(ATC assigned only.)

HNKER TRANSITION (HNKER.VKTRY2):

(ATC assigned only.)

HOFF TRANSITION (HOFF.VKTRY2):

(ATC assigned only.)

IBAKE TRANSITION (IBAKE.VKTRY2):

(ATC assigned only.)

KLAWW TRANSITION (KLAWW.VKTRY2):

(ATC assigned only.)

MDANO TRANSITION (MDANO.VKTRY2):

(ATC assigned only.)

RBUKL TRANSITION (RBUKL.VKTRY2):

(ATC assigned only.)

TURKI TRANSITION (TURKI.VKTRY2):

(ATC assigned only.)

TYPTN TRANSITION (TYPTN.VKTRY2):

(ATC assigned only.)

WLLTR TRANSITION (WLLTR.VKTRY2):

(ATC assigned only.)

NOTE: RADAR Required.

NOTE: RNAV 1.

NOTE: DME/DME/IRU or GPS Required.

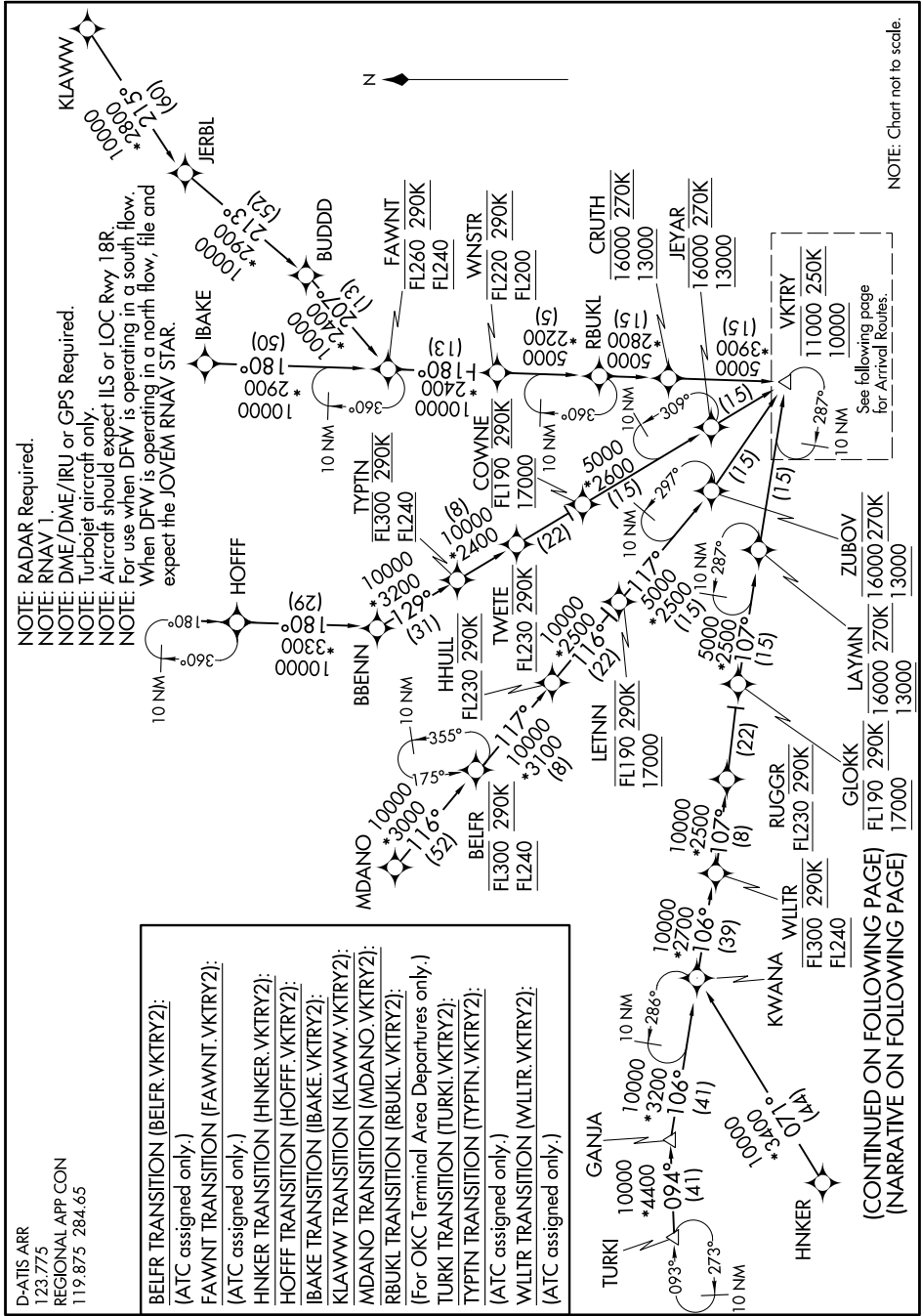
NOTE: Turboprop aircraft only.

NOTE: Aircraft should expect ILS or LOC Rwy 18R.

NOTE: For use when DFW is operating in a south flow.

NOTE: When DFW is operating in a north flow, file and expect the JOVEV RNAV STAR.

NOTE: For use when DFW is operating in a north flow, file and expect the JOVEV RNAV STAR.



(CONTINUED ON FOLLOWING PAGE)
(NARRATIVE ON FOLLOWING PAGE)

NOTE: Chart not to scale.

SC-2, 08 OCT 2020 to 05 NOV 2020