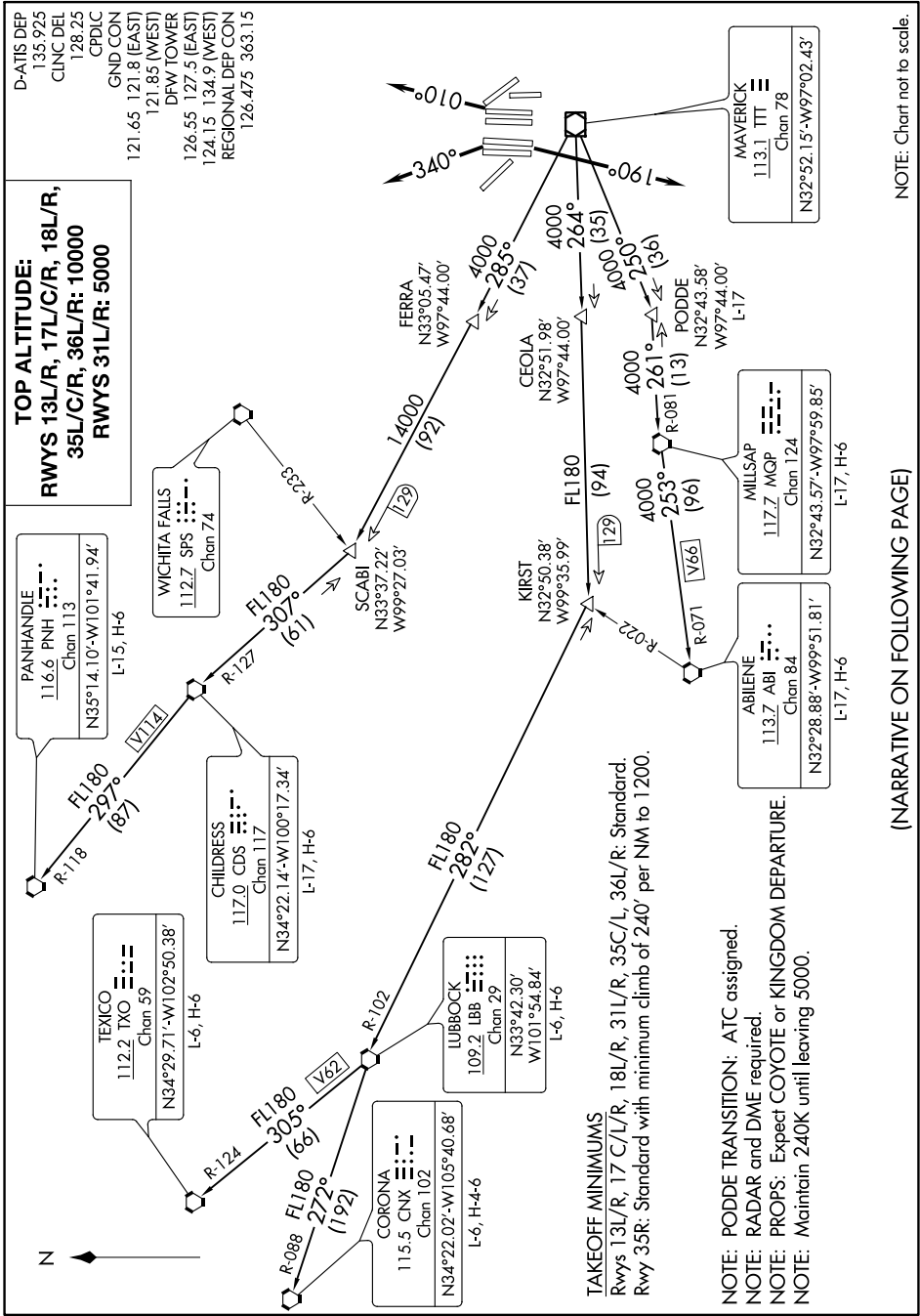


WORTH FOUR DEPARTURE

0200 \ 08 OCT 2020 TO 05 NOV 2020



D-ATIS DEP
135.925
CLNC DEL
128.25
CPDIC
GND CON
121.65 121.8 (EAST)
121.85 (WEST)
DFW TOWER
126.55 127.5 (EAST)
124.15 134.9 (WEST)
REGIONAL DEP CON
126.475 363.15

TOP ALTITUDE:
RWYS 13L/R, 17L/C/R, 18L/R,
35L/C/R, 36L/R: 10000
RWYS 31L/R: 5000

PANHANDLE
116.6 PNH
Chn 113
N35°14.10'-W101°41.94'
L-15, H-6

WICHITA FALLS
112.7 SFS
Chn 74

CHILDRESS
117.0 CDS
Chn 117
N34°22.14'-W100°17.34'
L-17, H-6

TEXICO
112.2 TXO
Chn 59
N34°29.71'-W102°50.38'
L-6, H-6

LUBBOCK
109.2 LBB
Chn 29
N33°42.30'
W101°54.84'
L-6, H-6

CORONA
115.5 CNX
Chn 102
N34°22.02'-W105°40.68'
L-6, H-4-6

KIRST
N32°50.38'
W99°35.99'

SCABLI
N33°37.22'
W99°27.03'

FERRA
N33°05.47'
W97°44.00'

CEOLIA
N32°51.98'
W97°44.00'

FL180
N32°51.98'
W97°44.00'

PODDE
N32°43.58'
W97°44.00'
L-17

MILLSAP
117.7 MQP
Chn 124
N32°43.57'-W97°59.85'
L-17, H-6

ABIENE
113.7 ABI
Chn 84
N32°28.88'-W99°51.81'
L-17, H-6

MAYVERICK
113.1 TTT
Chn 78
N32°52.15'-W97°02.43'

TAKEOFF MINIMUMS

Rwys 13L/R, 17 C/L/R, 18L/R, 31L/R, 35C/L, 36L/R: Standard.
Rwy 35R: Standard with minimum climb of 240' per NM to 1200.

NOTE: PODDE TRANSITION: ATC assigned.
NOTE: RADAR and DME required.
NOTE: PROPS: Expect COYOTE or KINGDOM DEPARTURE.
NOTE: Maintain 240K until leaving 5000.

(NARRATIVE ON FOLLOWING PAGE)

NOTE: Chart not to scale.

SC-2, 08 OCT 2020 TO 05 NOV 2020

WORTH FOUR DEPARTURE