

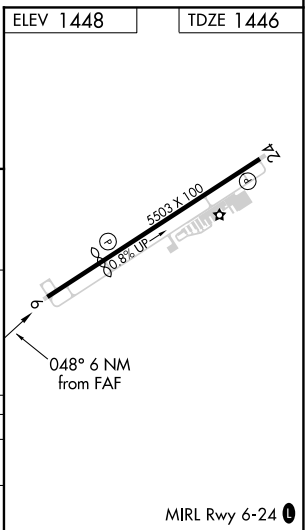
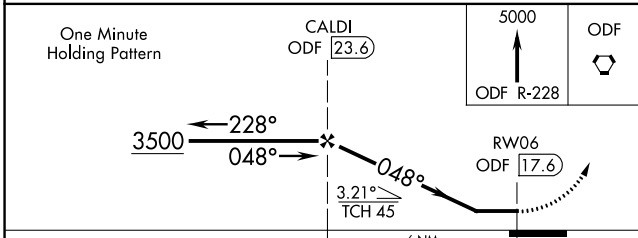
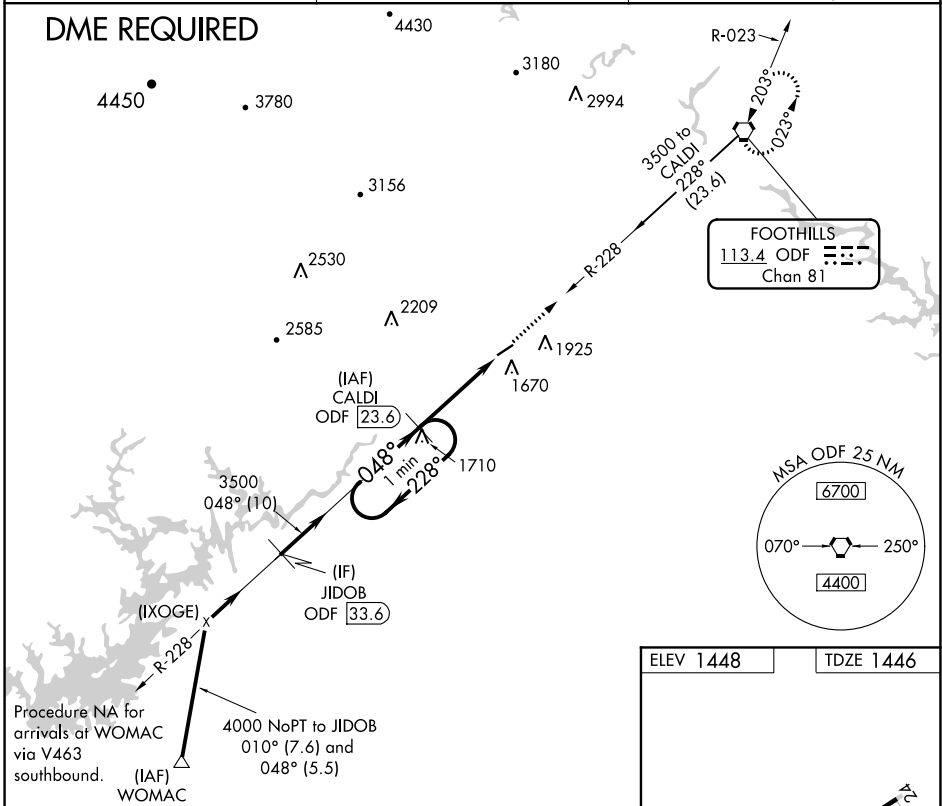
VORTAC ODF	APP CRS	Rwy Idg	<b>4111</b>
<b>113.4</b>	<b>048°</b>	TDZE	<b>1446</b>
Chan <b>81</b>		Apt Elev	<b>1448</b>

**VOR RWY 6**  
HABERSHAM COUNTY (AJR)

▼ When local altimeter setting not received, use Gainesville altimeter setting and increase all MDA 80 feet and increase S-6 Cats C/D and Circling Cats C/D visibility ¼ mile.  
 ▲ NA Circling Rwy 24 NA at night. Rwy 6 helicopter visibility reduction below ¾ SM NA. Rwy 24 helicopter visibility reduction below 1 SM NA. DME required.

MISSED APPROACH: Climb to 5000 via ODF R-228 to ODF VORTAC and hold.

AWOS-3 <b>119.175</b>	ATLANTA CENTER <b>134.8 379.95</b>	UNICOM <b>122.7 (CTAF) 0</b>
--------------------------	---------------------------------------	---------------------------------



CATEGORY	A	B	C	D
S-6	1980-1	534 (600-1)	1980-1½ 534 (600-1½)	1980-1¾ 534 (600-1¾)
CIRCLING	2100-1	652 (700-1)	2100-1¾ 652 (700-1¾)	2280-2¾ 832 (900-2¾)

SE-4, 08 OCT 2020 to 05 NOV 2020

SE-4, 08 OCT 2020 to 05 NOV 2020