

WAAS CH 69218 W11A	APP CRS 110°	Rwy Idg 4400 TDZE 2925 Apt Elev 2925
--	------------------------	---

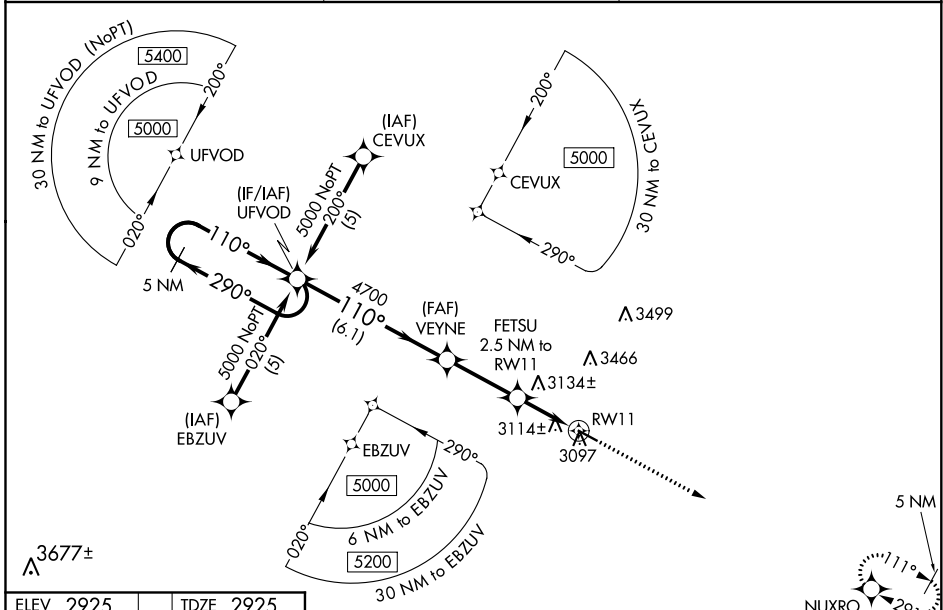
RNAV (GPS) RWY 11

THOMAS COUNTY (TIF)

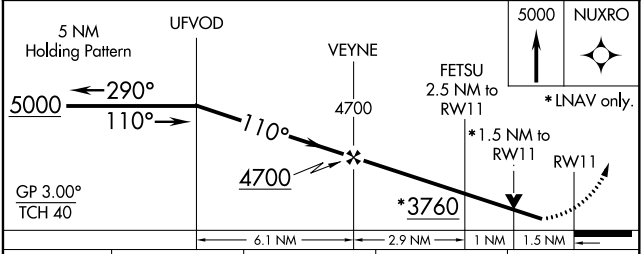
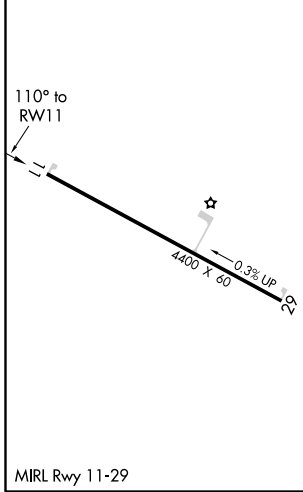
⚠ Baro-VNAV NA when using North Platte altimeter setting. For uncompensated Baro-VNAV systems, LNAV/VNAV NA below -20°C (-4°F) or above 54°C (130°F). DME/DME RNP-0.3 NA. Visibility reduction by helicopters NA. When local altimeter setting not received use North Platte altimeter setting and increase all DA 137 feet and all MDA 140 feet, increase LPV and LNAV/VNAV Cats A and B visibility ½ mile. VDP NA with North Platte altimeter setting.

MISSED APPROACH: Climb to 5000 direct NUXRO and hold.

AWOS-3 120.825	DENVER CENTER 127.95 338.2	CTAF 122.9
--------------------------	--------------------------------------	----------------------



ELEV 2925	TDZE 2925
-----------	-----------



CATEGORY	A	B	C	D
LPV DA	3175-1	250 (300-1)		NA
LNAV/VNAV DA	3490-2	565 (600-2)		NA
LNAV MDA	3440-1	515 (600-1)		NA
CIRCLING	3480-1	555 (600-1)		NA

NC-2, 08 OCT 2020 to 05 NOV 2020

NC-2, 08 OCT 2020 to 05 NOV 2020