

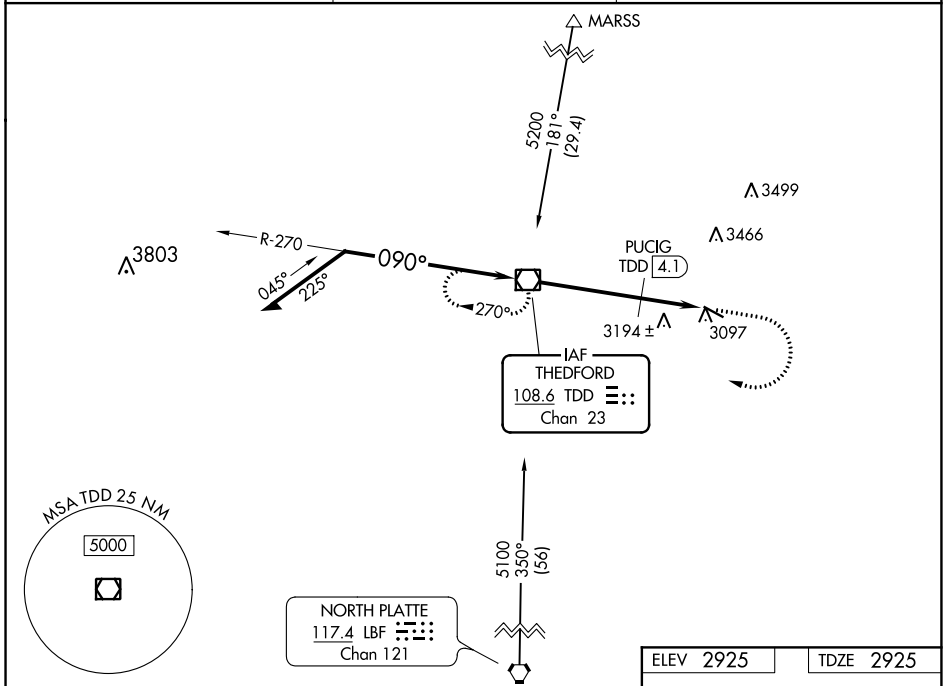
VOR/DME TDD 108.6 Chan 23	APP CRS 090°	Rwy Idg TDZE Apt Elev	4400 2925 2925
---	------------------------	-----------------------------	---

VOR RWY 11
THOMAS COUNTY (TIF)

NA Visibility reduction by helicopters NA. When local altimeter setting not received, use North Platte altimeter setting and increase all MDA 140 feet, increase S-11 Cat B and Circling Cat B visibility 1/4 mile. VDP NA when using North Platte altimeter setting.

MISSED APPROACH: Climb to 4000 then climbing right turn to 5100 direct TDD VOR/DME and hold.

AWOS-3 120.825	DENVER CENTER 127.95 338.2	CTAF 122.9
--------------------------	--------------------------------------	----------------------



NC-2, 08 OCT 2020 to 05 NOV 2020

NC-2, 08 OCT 2020 to 05 NOV 2020

ELEV 2925		TDZE 2925	
<p>Remain within 10 NM</p> <p>5100 → 270° → 4000</p> <p>5100 → 090° → 5100</p> <p>*3780 when using North Platte altimeter setting.</p>		<p>TDD VOR/DME</p> <p>4000 5100 TDD</p> <p>PUCIG TDD 4.1</p> <p>TCH 40</p> <p>TDD 4.8</p> <p>TDD 6.4</p>	
<p>*3640</p> <p>4.1 NM</p> <p>0.7</p> <p>1.6 NM</p>		<p>090° 6.4 NM from FAF</p> <p>4400 A 60</p> <p>0.3% UP</p>	
CATEGORY	A	B	D
S-11	3640-1	715 (800-1)	NA
CIRCLING	3640-1	715 (800-1)	NA
PUCIG FIX MINIMUMS			
S-11	3500-1	575 (600-1)	NA
CIRCLING	3500-1	575 (600-1)	NA
MIRL Rwy 11-29			
FAF to MAP 6.4 NM			
Knots	60	90	120 150 180
Min:Sec	6:30	4:20	3:15 2:36 2:10