

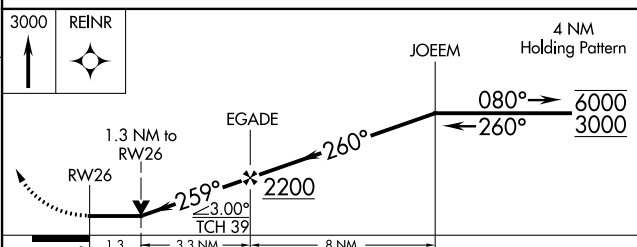
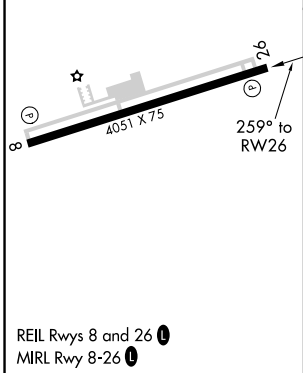
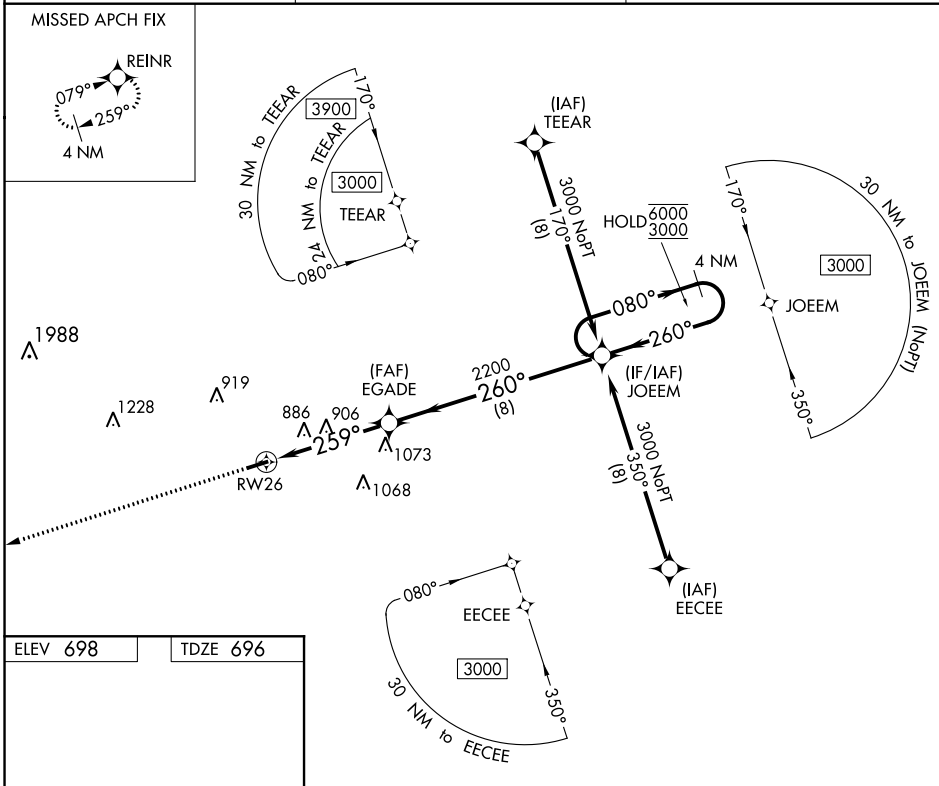
WAAS CH 81935 W26A	APP CRS 259°	Rwy Idg TDZE Apt Elev	4051 696 698
--	------------------------	-----------------------------	---

RNAV (GPS) RWY 26

LAURENS COUNTY (LUX)

RNP APCH: ▼ Rwy 26 helicopter visibility reduction below 3/4 SM NA.	MISSED APPROACH: Climb to 3000 direct REINR and hold.
--	---

AWOS-3 123.975	GREER APP CON ★ 120.6 350.2	UNICOM 122.8 (CTAF) 0
--------------------------	---------------------------------------	---------------------------------



CATEGORY	A	B	C	D
LP MDA	1160-1	464 (500-1)		NA
LNAV MDA	1160-1	464 (500-1)		NA
<input checked="" type="checkbox"/> CIRCLING	1200-1	502 (600-1)		NA

SE-2, 08 OCT 2020 to 05 NOV 2020

SE-2, 08 OCT 2020 to 05 NOV 2020