

APP CRS 272°	Rwy Idg TDZE Apt Elev	2499 645 645
------------------------	-----------------------------	---

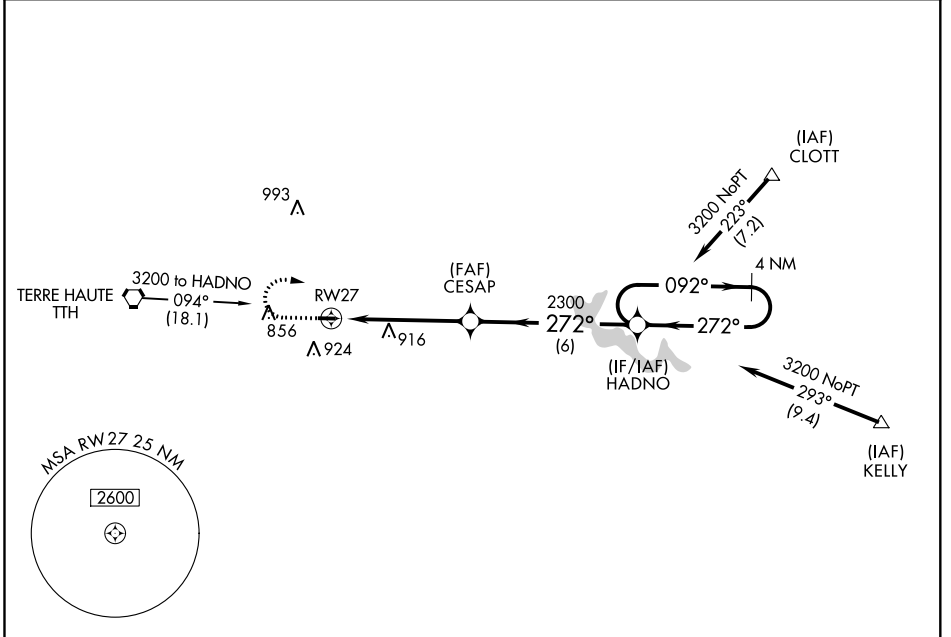
RNAV (GPS) RWY 27

BRAZIL CLAY COUNTY (ØI2)

▼ DME/DME RNP-0.3 NA. Use Terre Haute altimeter setting.
▲ NA Procedure NA at night. Helicopter visibility reduction below 1 SM NA.

MISSED APPROACH: Climb to 2300 then climbing right turn to 3200 direct HADNO WP and hold.

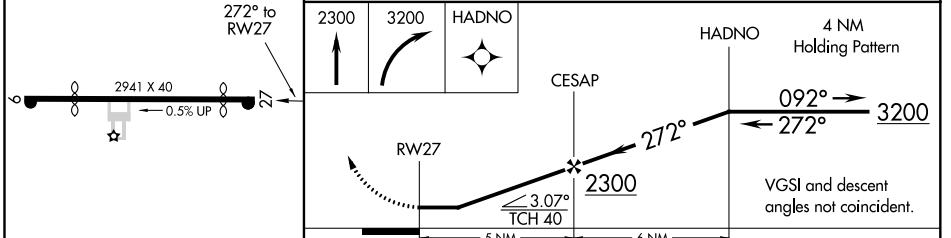
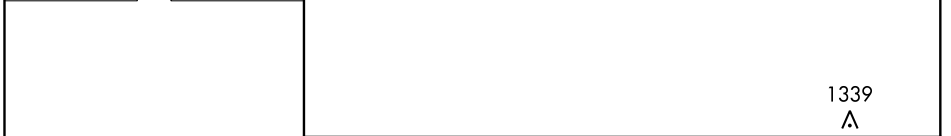
HULMAN APP CON **125.45 339.8** UNICOM **122.8 (CTAF) Ø**



EC-2, 08 OCT 2020 to 05 NOV 2020

EC-2, 08 OCT 2020 to 05 NOV 2020

ELEV 645	TDZE 645
----------	----------



CATEGORY	A	B	C	D
LNAV MDA	1240-1 595 (600-1)		NA	
CIRCLING	1240-1 595 (600-1)		NA	

LIRL Rwy 9-27 Ø