

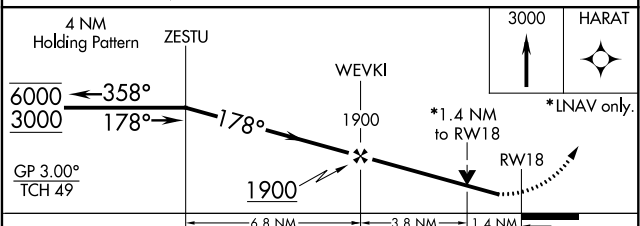
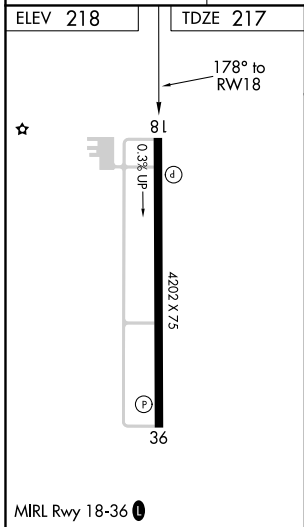
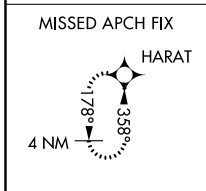
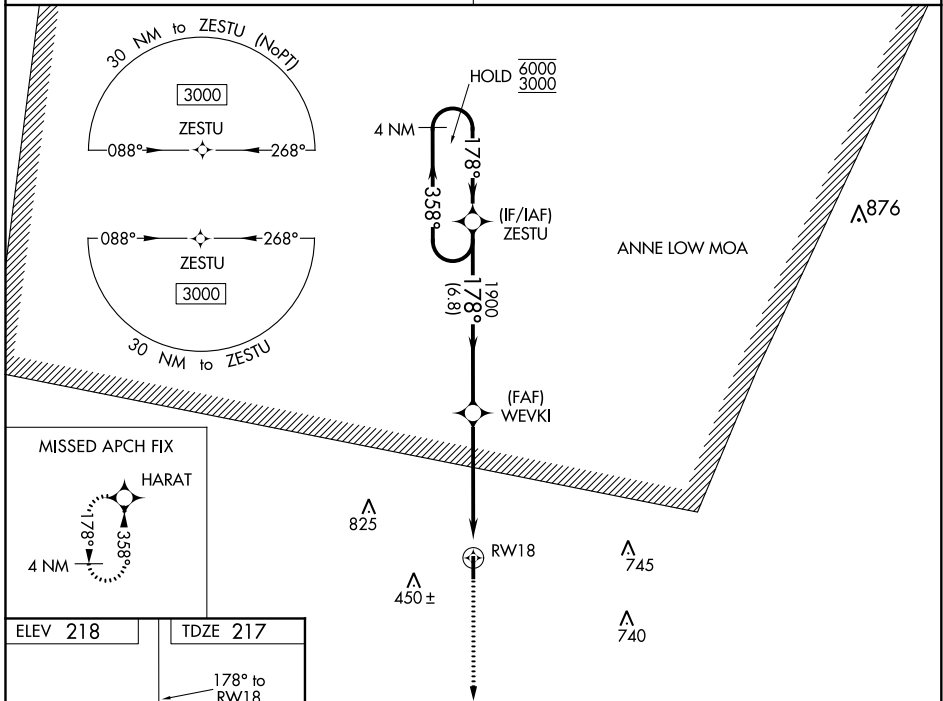
WAAS CH <b>86541</b> <b>W18A</b>	APP CRS <b>178°</b>	Rwy Idg TDZE Apt Elev	<b>4202</b> <b>217</b> <b>218</b>
--	------------------------	-----------------------------	---

# RNAV (GPS) RWY 18

SPRINGHILL (SPH)

RNP APCH.	MISSED APPROACH: Climb to 3000 direct HARAT and hold.
<p><b>▽</b> Rwy 18 helicopter visibility reduction below 3/4 NA.  <b>▲</b> NA For uncompensated Baro-VNAV systems, procedure NA below -15°C or above 54°C.</p>	

SHREVEPORT APP CON <b>123.75 360.725</b>	UNICOM <b>122.8 (CTAF)</b>
---	-------------------------------



CATEGORY	A	B	C	D
LPV DA	498-7/8	281 (300-7/8)		NA
LNAV/VNAV DA	496-7/8	279 (300-7/8)		NA
LNAV MDA	700-1	483 (500-1)	700-1 3/8 483 (500-1 3/8)	NA
CIRCLING	700-1	482 (500-1)	820-1 1/2 602 (700-1 1/2)	NA

SC-4, 08 OCT 2020 to 05 NOV 2020

SC-4, 08 OCT 2020 to 05 NOV 2020