

APP CRS	Rwy Idg	3401
357°	TDZE	888
	Apt Elev	888

RNAV (GPS) RWY 36

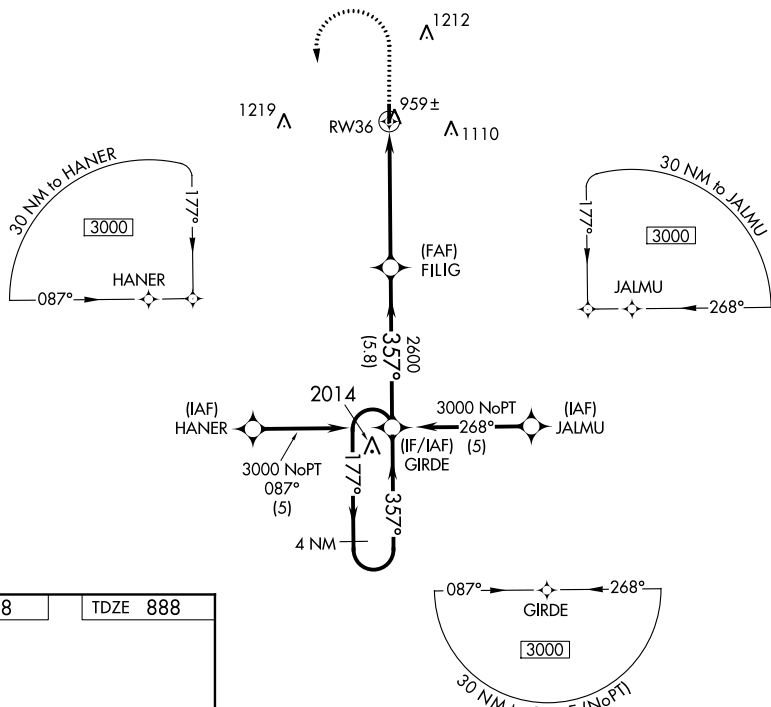
BLOOMFIELD MUNI (4K6)

NA Use Ottumwa altimeter setting; when not available, procedure NA.
DME/DME RNP-0.3 NA.

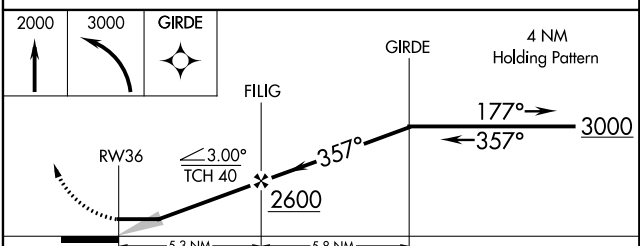
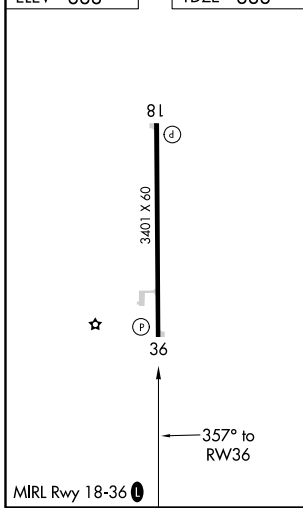
MISSED APPROACH: Climb to 2000 then climbing left turn to 3000 direct GIRDE WP and hold.

CHICAGO CENTER
118.15 335.575

UNICOM
122.8 (CTAF) 1



ELEV 888 TDZE 888



CATEGORY	A	B	C	D
LNAV MDA	1400-1	512 (600-1)	1400-1½ 512 (600-1½)	NA
CIRCLING	1500-1	612 (700-1)	1520-1¾ 632 (700-1¾)	NA

NC-3, 08 OCT 2020 to 05 NOV 2020

NC-3, 08 OCT 2020 to 05 NOV 2020