

WAAS CH <b>90525</b> <b>W04B</b>	APP CRS <b>039°</b>	Rwy Idg TDZE Apt Elev	<b>5100</b> <b>1383</b> <b>1394</b>
--	------------------------	-----------------------------	---

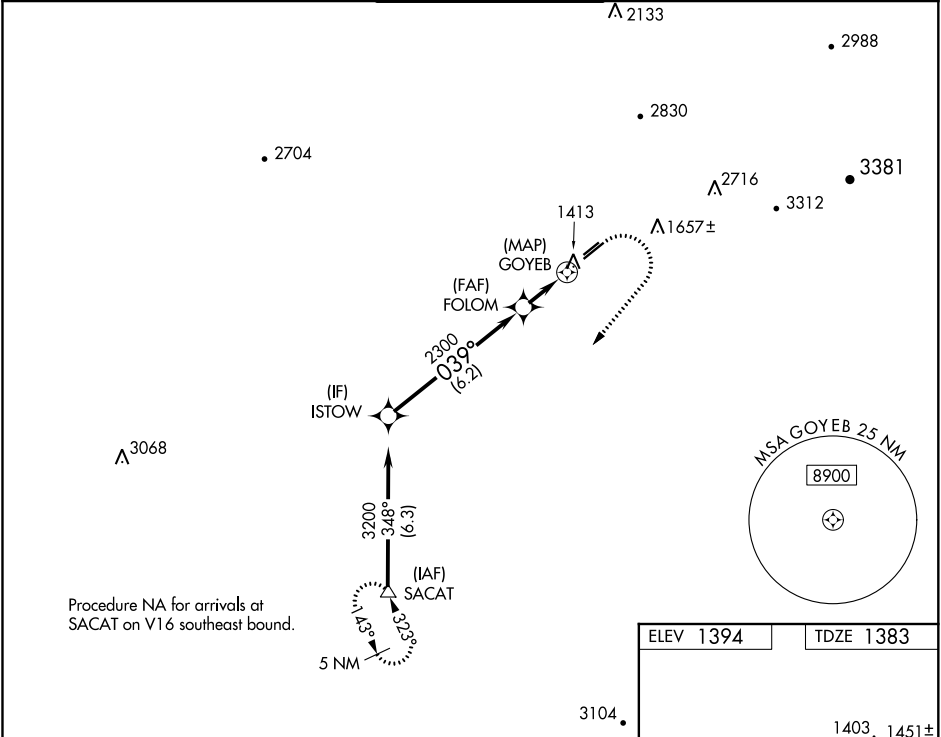
# RNAV (GPS) RWY 4R

FALCON FIELD (F'F'Z)

**⚠** DME/DME RNP-0.3 NA. When local altimeter setting not received, use Phoenix Sky Harbor Intl altimeter setting and increase all MDA 80 feet and increase LNAV Cat C visibility 1/8 mile. Helicopter visibility reduction below 1 SM NA.

**MISSED APPROACH:** Climb to 1900 then climbing right turn to 5000 direct SACAT and hold, continue climb-in-hold to 5000.

ATIS <b>118.25</b>	PHOENIX APP CON <b>120.7 239.0</b>	FALCON TOWER ★ <b>124.6 (CTAF)</b> <b>0</b>	GND CON <b>121.3</b>	UNICOM <b>122.95</b>
-----------------------	---------------------------------------	--	-------------------------	-------------------------

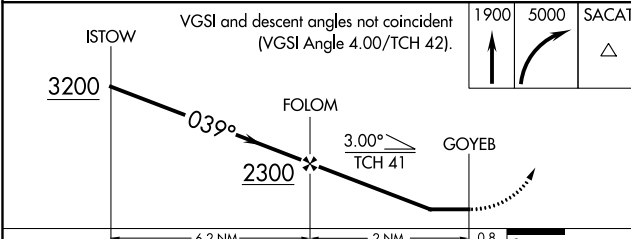
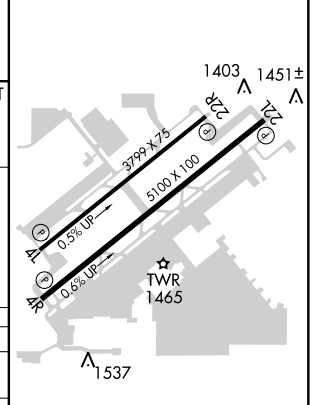


SW-4, 08 OCT 2020 to 05 NOV 2020

SW-4, 08 OCT 2020 to 05 NOV 2020

Procedure NA for arrivals at SACAT on V16 southeast bound.

ELEV 1394	TDZE 1383
-----------	-----------



CATEGORY	A	B	C	D
LP MDA	1680-1	297 (300-1)		NA
LNAV MDA	1800-1	417 (500-1)	1800-1 1/4 417 (500-1 1/4)	NA
CIRCLING	1900-1	506 (600-1)	1900-1 1/2 506 (600-1 1/2)	NA

REIL Rwy 4R, 4L and 22R  
MIRL Rwy 4R-22L **0**  
MIRL Rwy 4L-22R