

# KUSSO SIX DEPARTURE (RNAV)

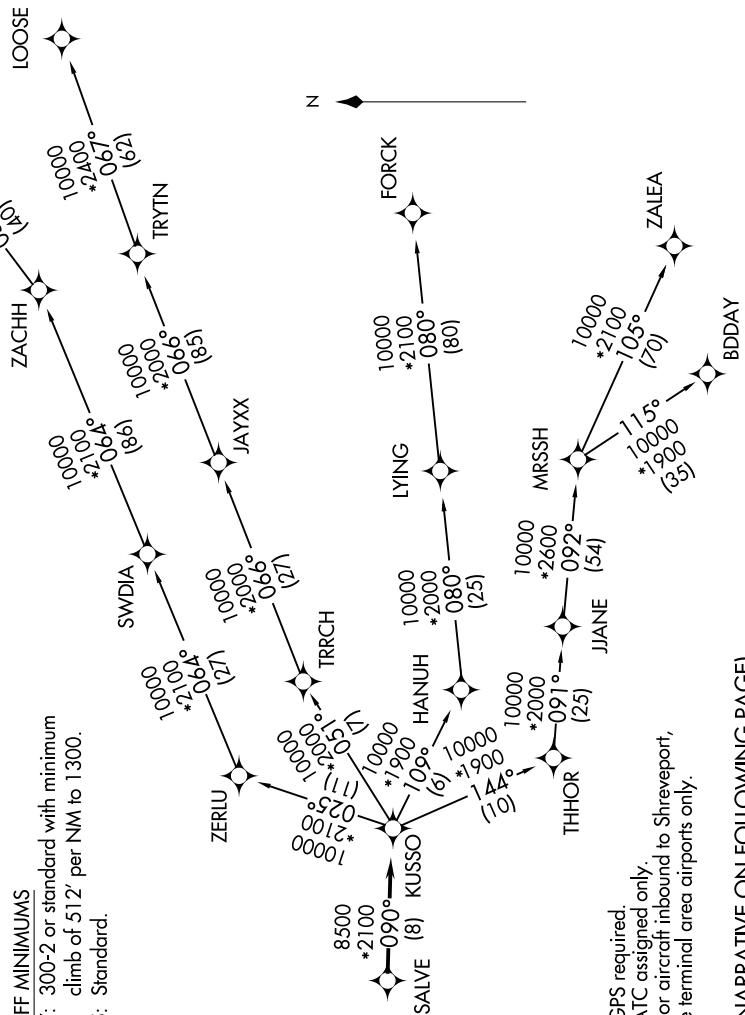
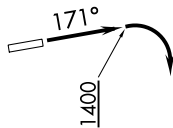
SC-2, 08 OCT 2020 to 05 NOV 2020

**TOP ALTITUDE:  
ASSIGNED BY ATC**

### TAKEOFF MINIMUMS

Rwy 17: 300-2 or standard with minimum climb of 512' per NM to 1300.  
Rwy 35: Standard.

REGIONAL DEP CON  
135.975 379.9  
CTAF  
123.0



NOTE: RADAR required.  
NOTE: RNAV 1.  
NOTE: DME/DME/IRU or GPS required.  
NOTE: BDDAY transition: ATC assigned only.  
NOTE: MRSSH transition: For aircraft inbound to Shreveport, Jackson and Monroe terminal area airports only.

(NARRATIVE ON FOLLOWING PAGE)

NOTE: Chart not to scale.

SC-2, 08 OCT 2020 to 05 NOV 2020