

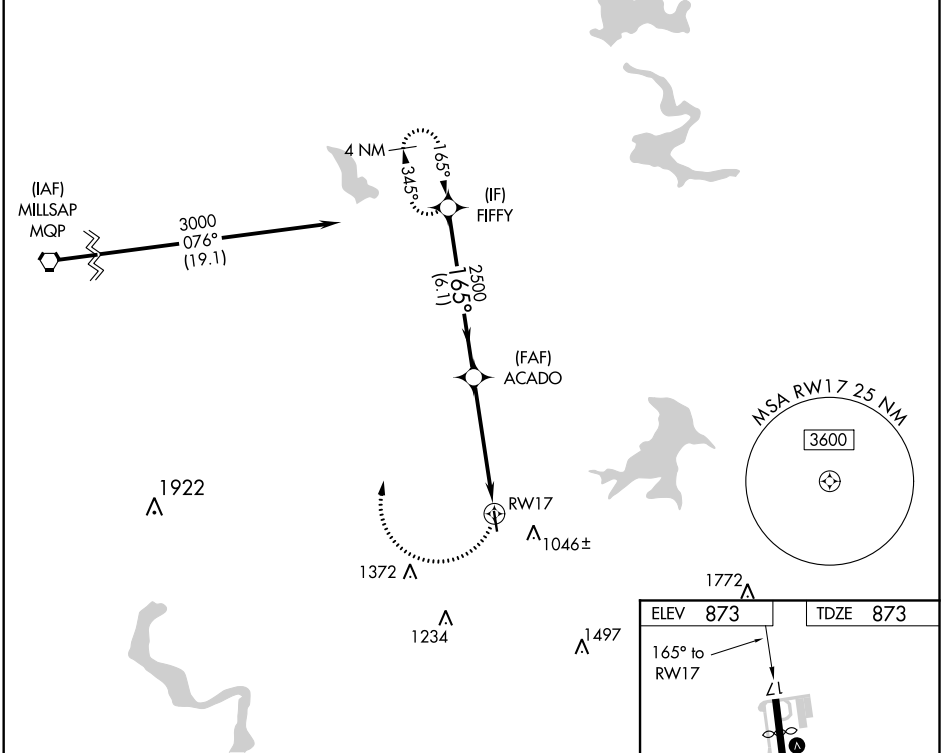
APP CRS	Rwy Idg	3657
165°	TDZE	873
	Apt Elev	873

RNAV (GPS) RWY 17

BOURLAND FIELD (50F)

RNP APCH.	Rwy 17 helicopter visibility reduction below 1 SM NA. Use Cleburne altimeter setting, when not received, use Fort Worth Meacham Intl altimeter setting and increase all MDA 40 feet, increase LNAV Cat C visibility 1/4 SM. Procedure NA at night.	MISSED APPROACH: Climbing right turn to 3000 direct FIFFY and hold.
⚠ NA		

CPT AWOS-3 119.525	REGIONAL APP CON 135.975 379.9	UNICOM 123.0 (CTAF) 0
------------------------------	--	---------------------------------



Procedure Turn NA FIFFY ACADO RWY 17 3000 2500 165° 3.04° TCH 40 6.1 NM 4.9 NM	3000 FIFFY	873 TDZE 873		
	165° to RWY 17 0.9% UP 6049 X 40 35	1772 1046±	1922 1372 1234 1497	
CATEGORY	A	B	C	D
LNAV MDA	1520-1	647 (700-1)	1520-1 3/4 647 (700-1 3/4)	NA

SC-2, 08 OCT 2020 to 05 NOV 2020

SC-2, 08 OCT 2020 to 05 NOV 2020