

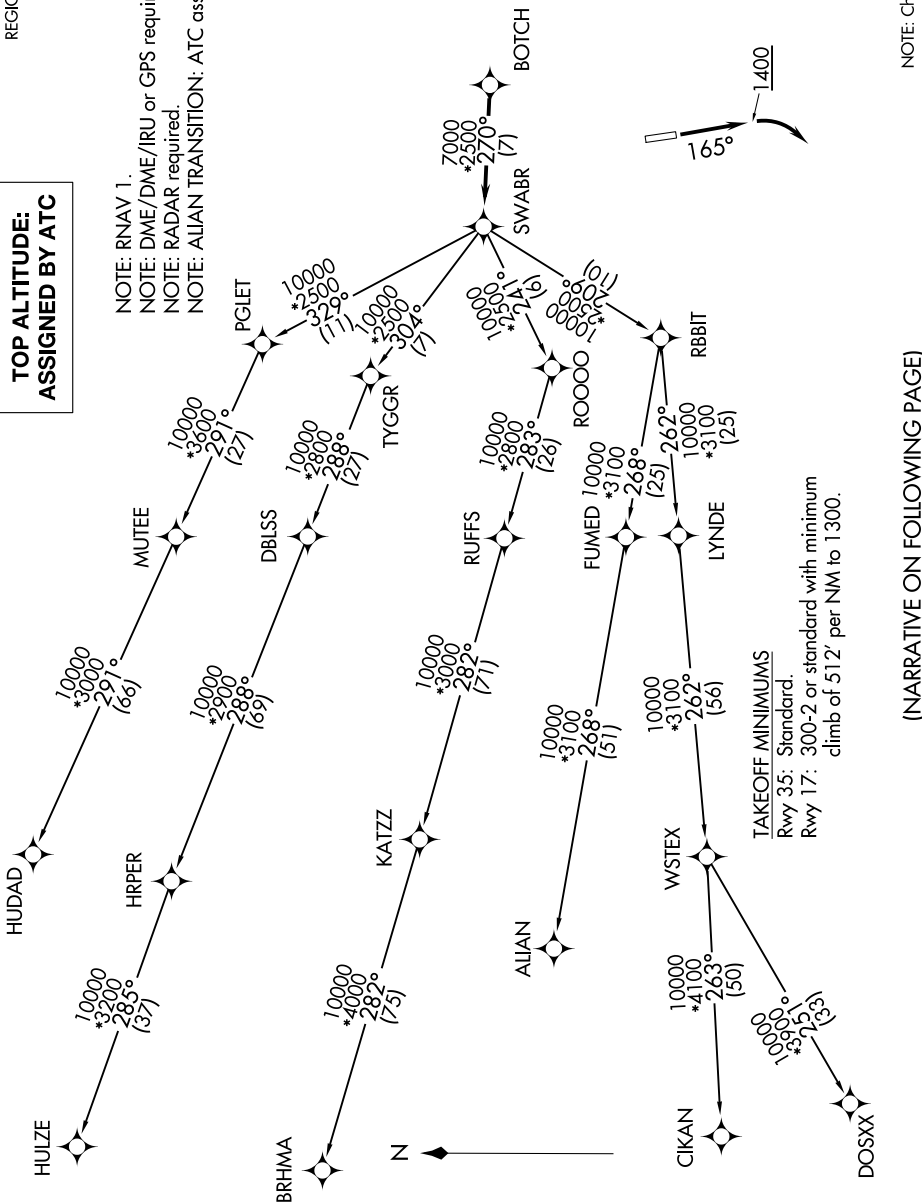
SWABR SIX DEPARTURE (RNAV)

SC-2, 08 OCT 2020 to 05 NOV 2020

TOP ALTITUDE: ASSIGNED BY ATC

REGIONAL DEP CON
135.975 379.9
CTAF
1230

NOTE: RNAV 1.
NOTE: DME/DME/IRU or GPS required.
NOTE: RADAR required.
NOTE: ALIEN TRANSITION: ATC assigned only.



TAKEOFF MINIMUMS
Rwy 35: Standard.
Rwy 17: 300-2 or standard with minimum climb of 512' per NM to 1300.

(NARRATIVE ON FOLLOWING PAGE)

NOTE: Chart not to scale.

SC-2, 08 OCT 2020 to 05 NOV 2020

SWABR SIX DEPARTURE (RNAV)