

VOR/DME TNU <b>112.5</b> Chan <b>72</b>	APP CRS <b>282°</b>	Rwy Idg TDZE <b>1008</b> Apt Elev <b>1008</b>
---	------------------------	---

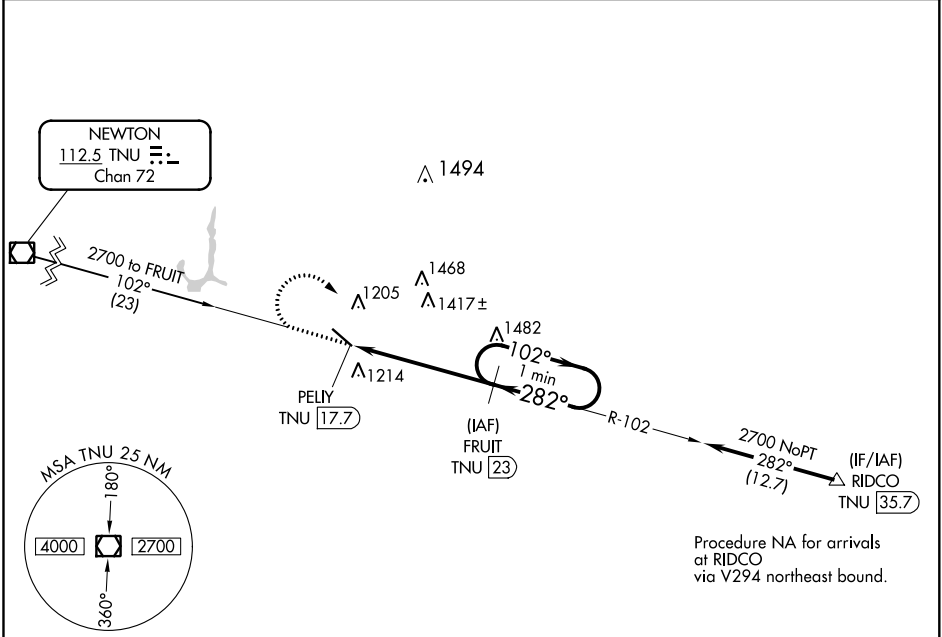
# VOR/DME RWY 31

GRINNELL RGNL (GGI)

**⚠** When local altimeter setting not received, use Newton altimeter setting and increase all MDAs 40 feet.  
**⚠** Visibility reduction by helicopters NA.

MISSED APPROACH: Climb to 2700 then right turn via TNU VOR/DME R-102 to FRUIT/TNU 23 DME and hold.

AWOS-3 <b>120.725</b>	CHICAGO CENTER <b>127.05 319.8</b>	UNICOM <b>122.8</b> (CTAF) <b>📻</b>
--------------------------	---------------------------------------	--

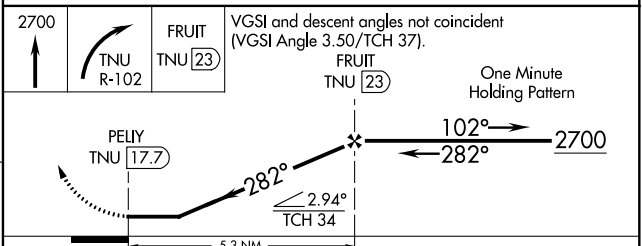
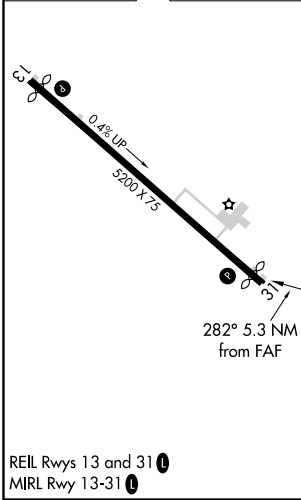


Procedure NA for arrivals at RIDCO via V294 northeast bound.

NC-3, 08 OCT 2020 to 05 NOV 2020

NC-3, 08 OCT 2020 to 05 NOV 2020

ELEV 1008	TDZE 1008
-----------	-----------



CATEGORY	A	B	C	D
S-31	1680-1 672 (700-1)	1680-2 672 (700-2)	1680-2 672 (700-2)	NA
CIRCLING	1680-1 672 (700-1)	1680-2 672 (700-2)	1680-2 672 (700-2)	NA