

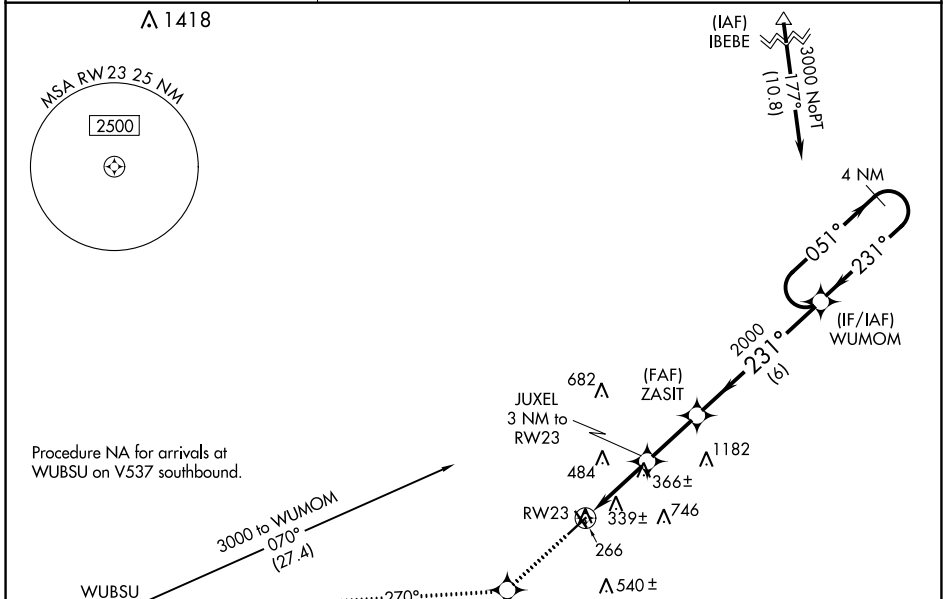
WAAS CH 81833 W23A	APP CRS 231°	Rwy Idg 5001 TDZE 235 Apt Elev 236
--	------------------------	---

RNAV (GPS) RWY 23

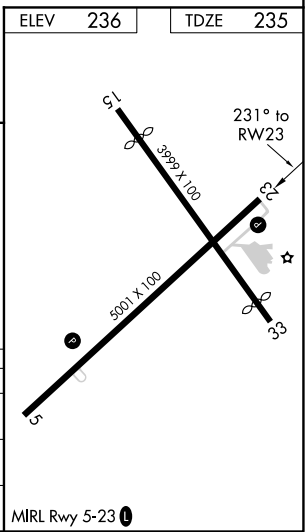
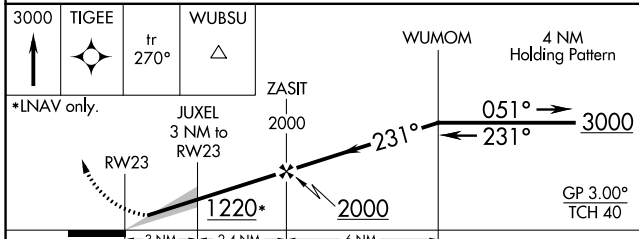
COOK COUNTY (15J)

RNP APCH.	Baro-VNAV NA. Use Moultrie altimeter setting; when not received, use Valdosta Rgnl altimeter setting and increase all DA 7 feet and all MDA 20 feet, increase LNAV/VNAV all Cats visibility 1/8 SM and LNAV Cat C and D visibility 1/8 SM.	MISSED APPROACH: Climb to 3000 direct TIGEE and on track 270° to WUBSU and hold.
-----------	--	--

MGR AWOS-3PT 118.925	VALDOSTA APP CON* 126.6 285.6	UNICOM 122.8 (CTAF) 0
--------------------------------	---	---------------------------------



ELEV	236	TDZE	235
------	-----	------	-----



CATEGORY	A	B	C	D
LPV DA	536-1		301 (400-1)	
LNAV/VNAV DA	689-1½		454 (500-1½)	
LNAV MDA	740-1	505 (600-1)	740-1⅓	505 (600-1⅓)

SE-4, 08 OCT 2020 to 05 NOV 2020

SE-4, 08 OCT 2020 to 05 NOV 2020